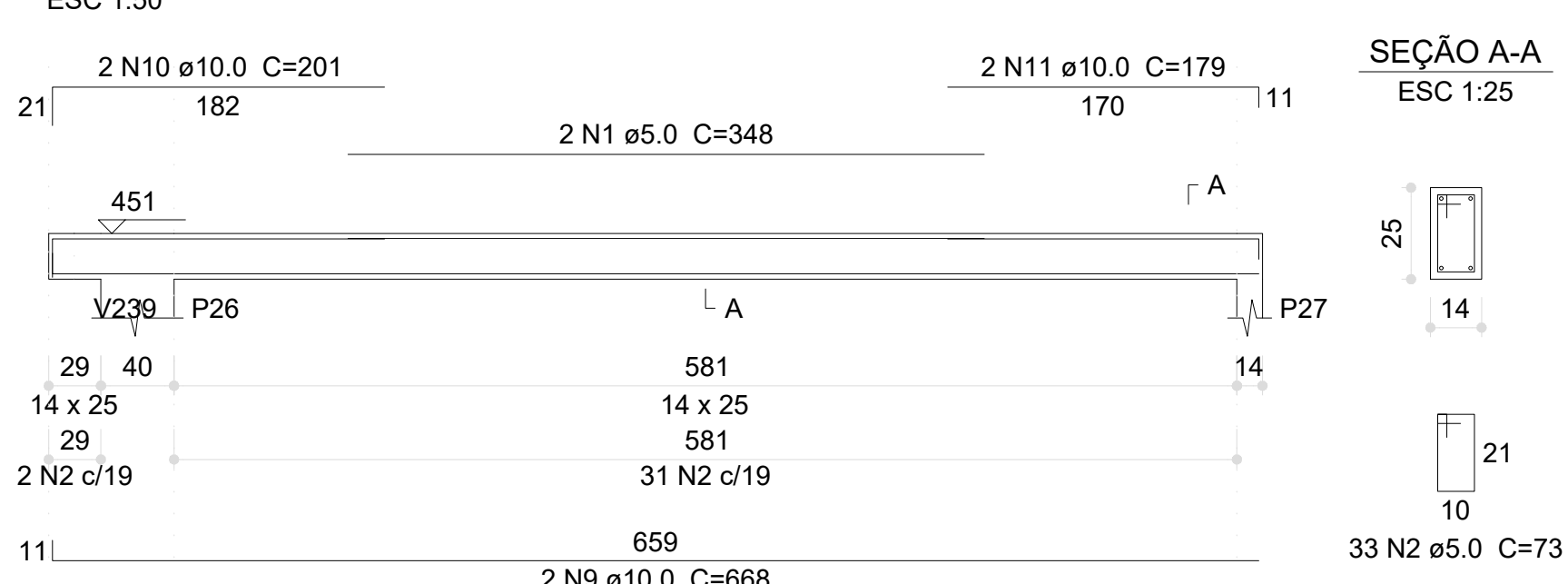
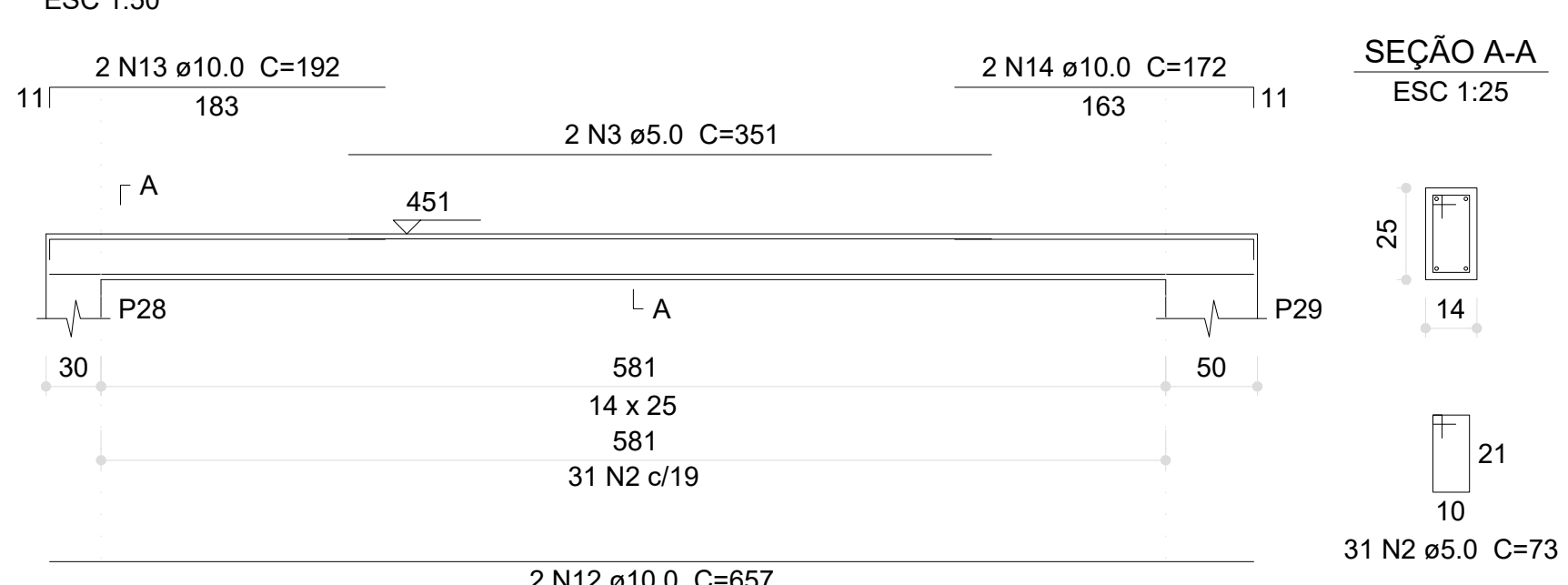


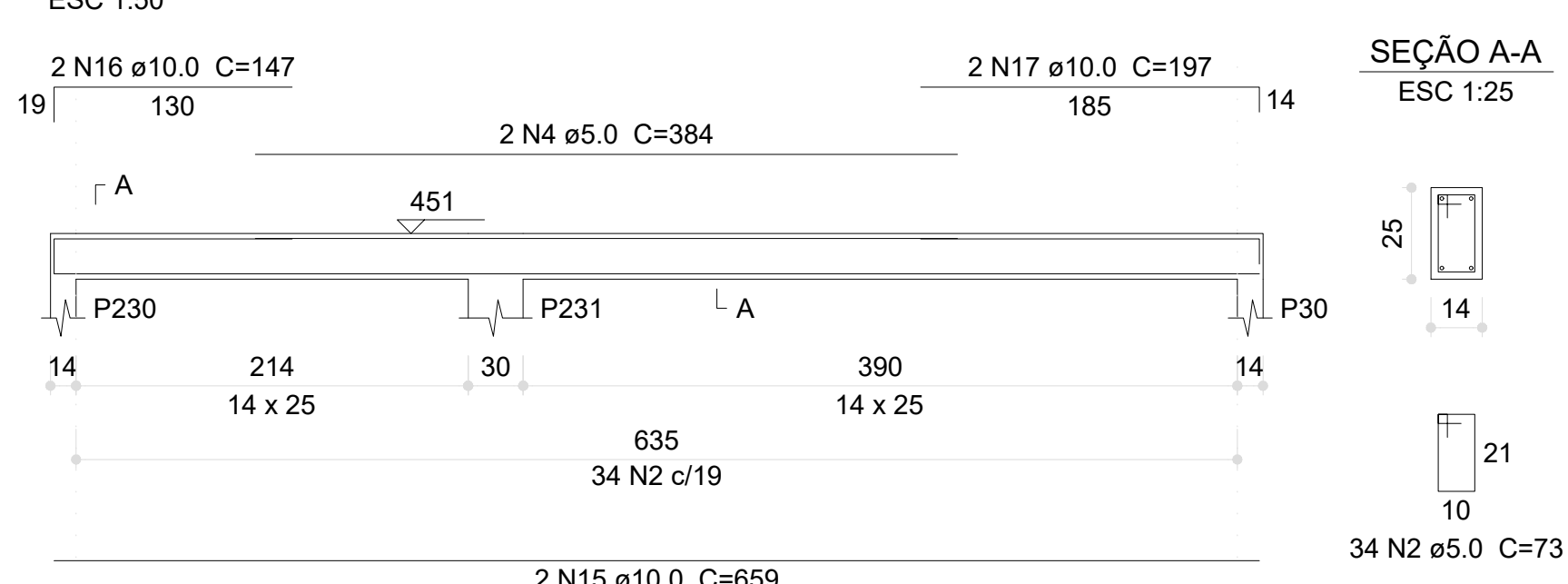
V201 (14 x 25)



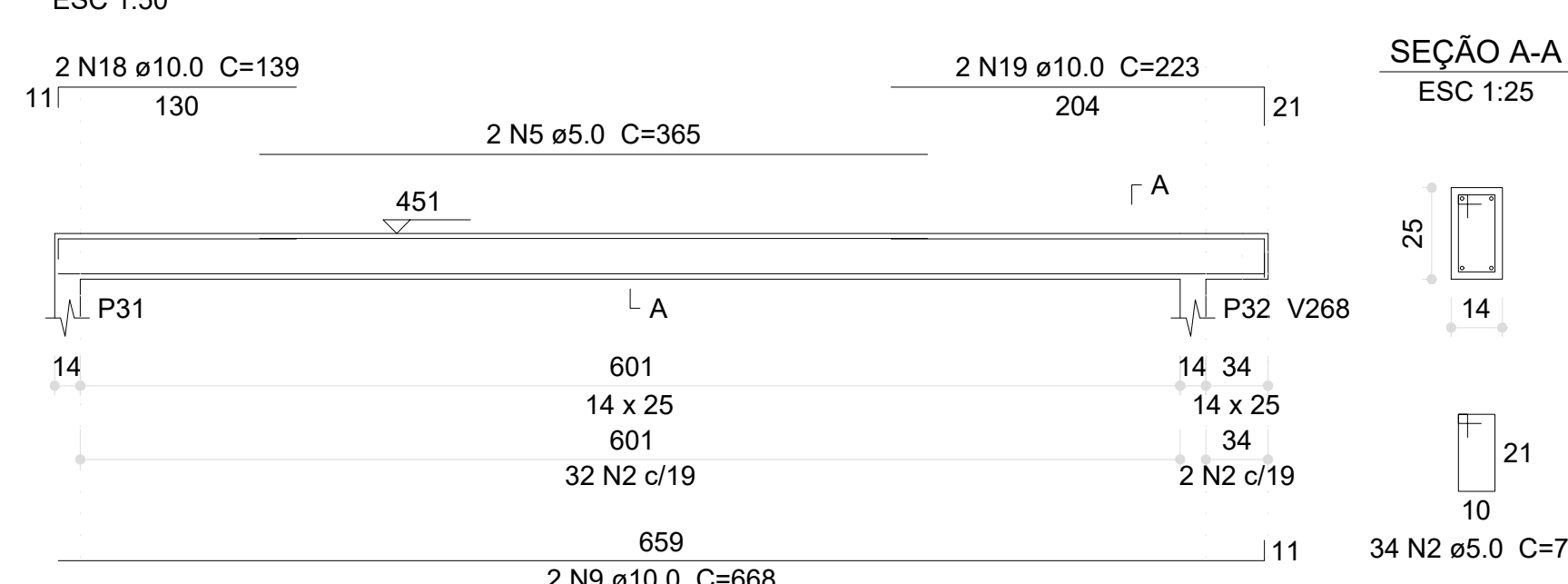
V202 (14 x 25)



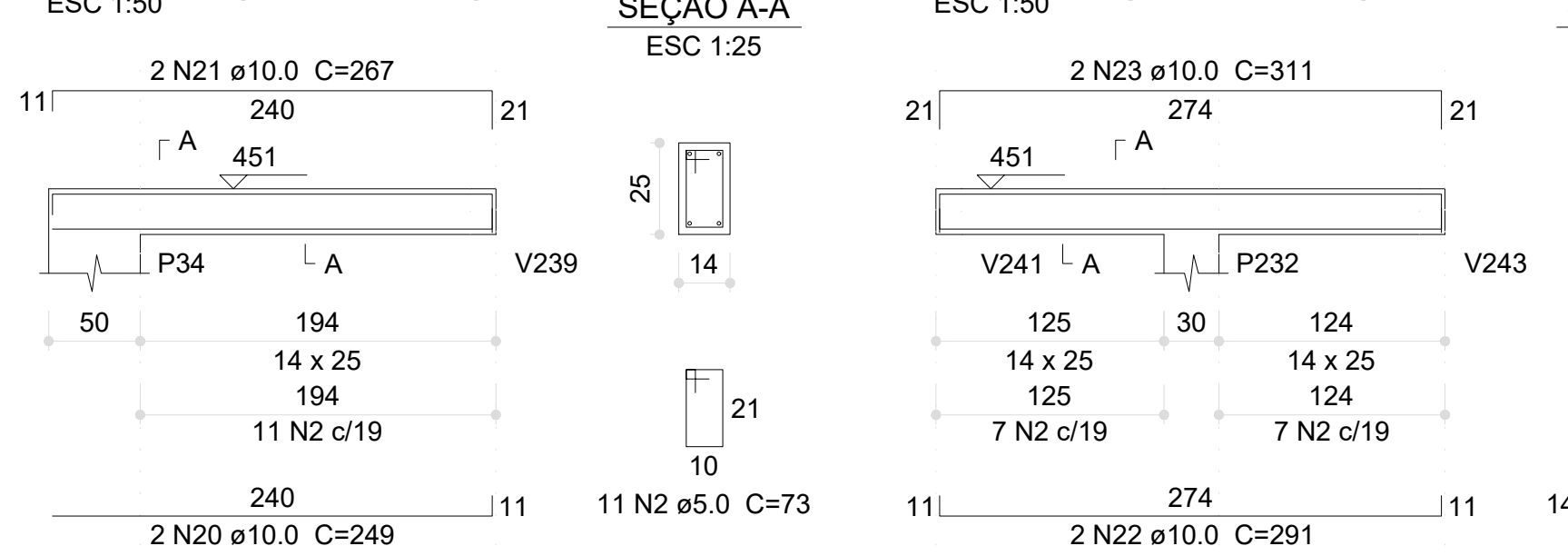
V203 (14 x 25)



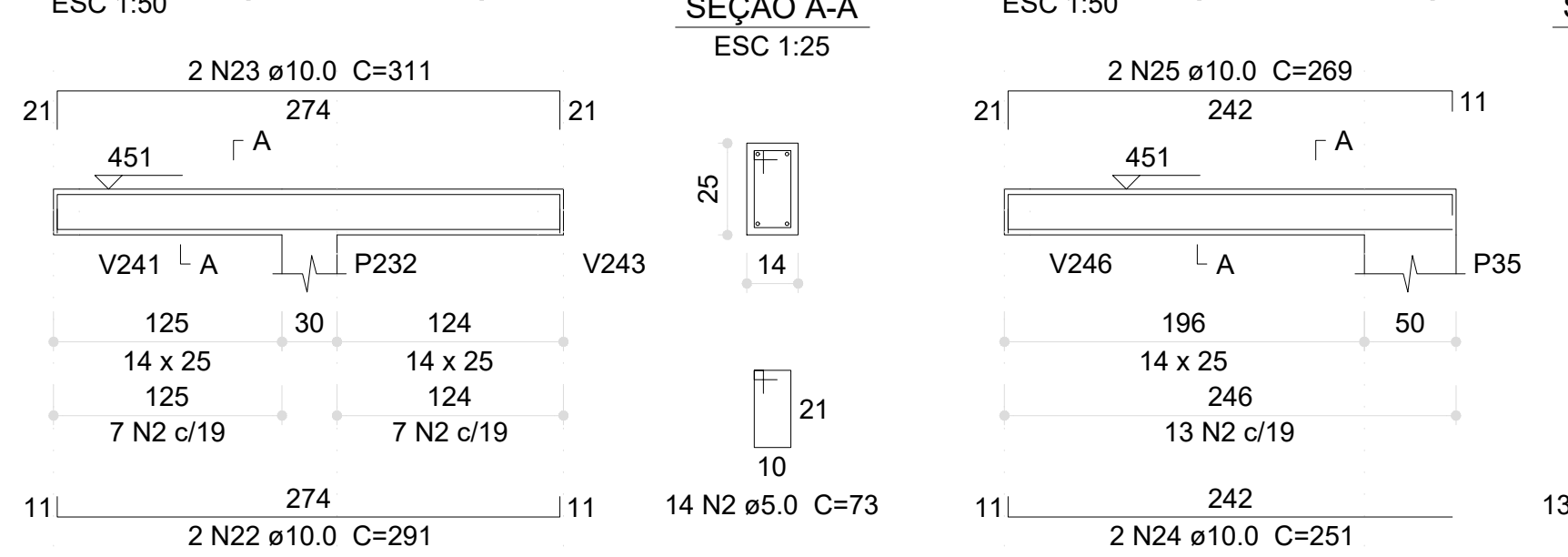
V204 (14 x 25)



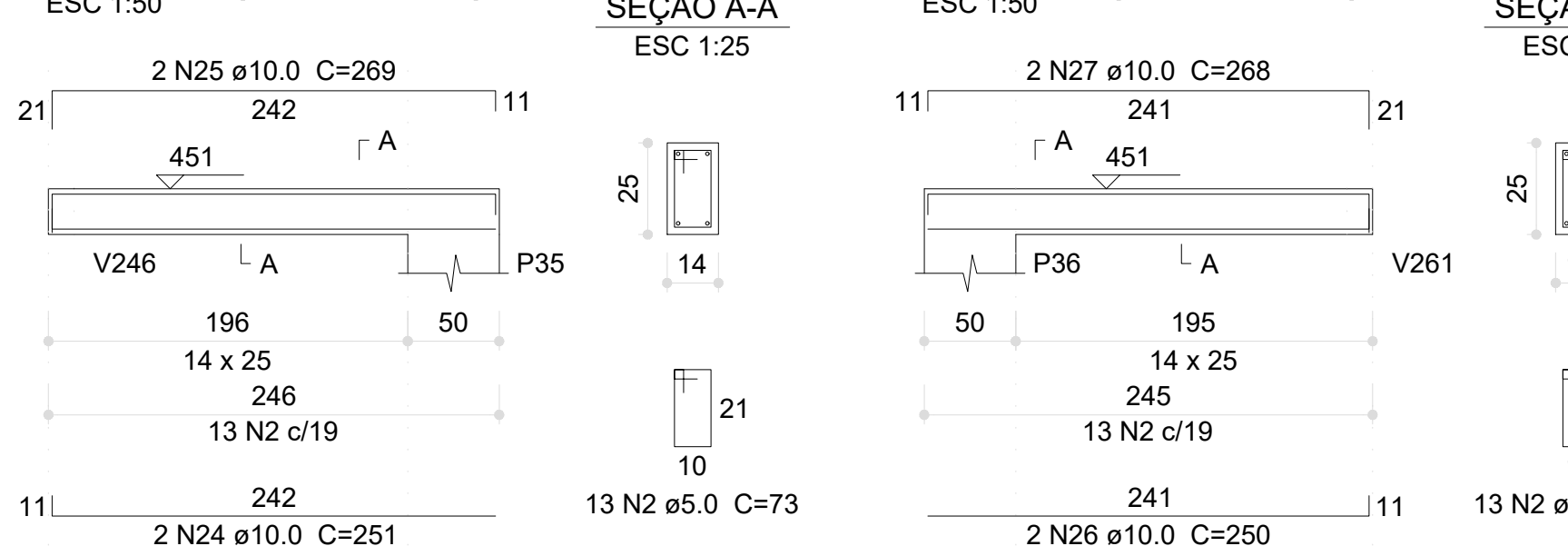
V205 (14 x 25)



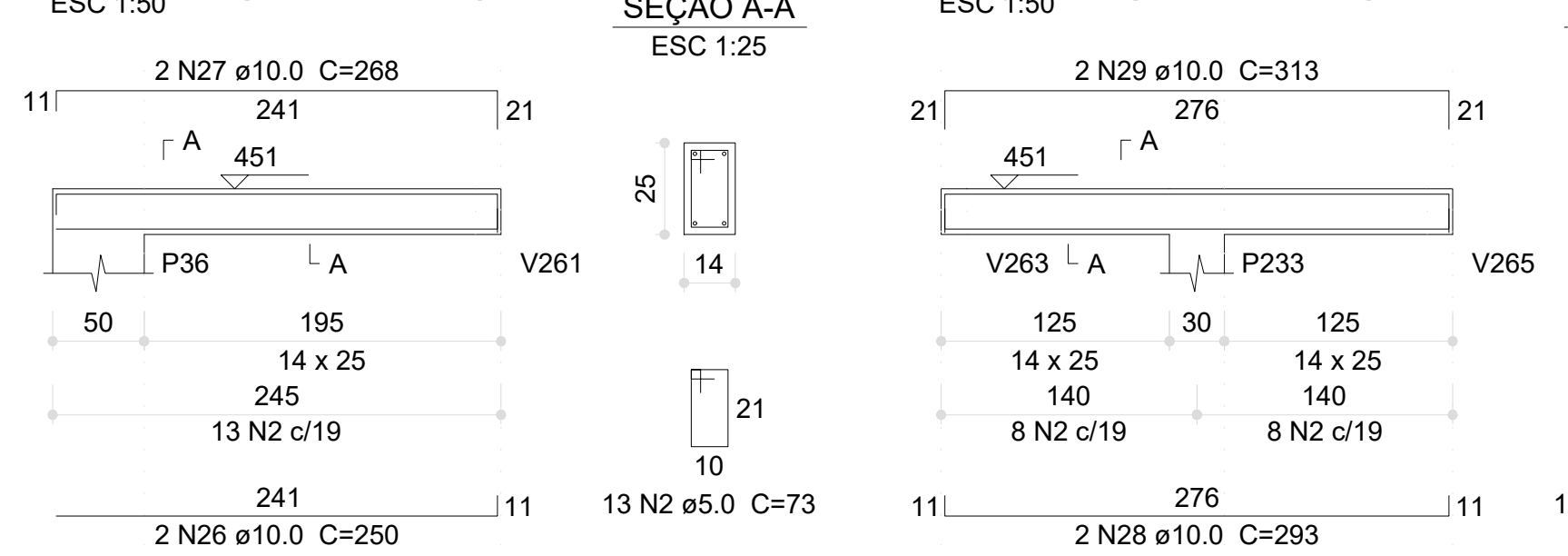
V206 (14 x 25)



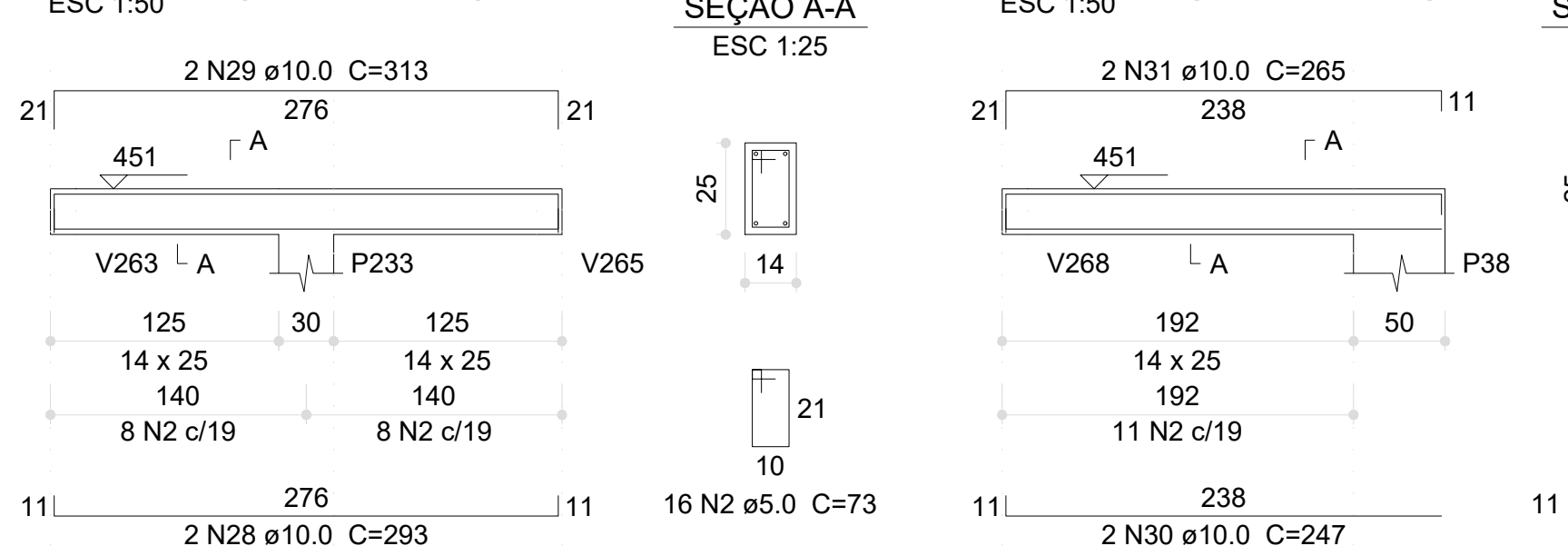
V207 (14 x 25)



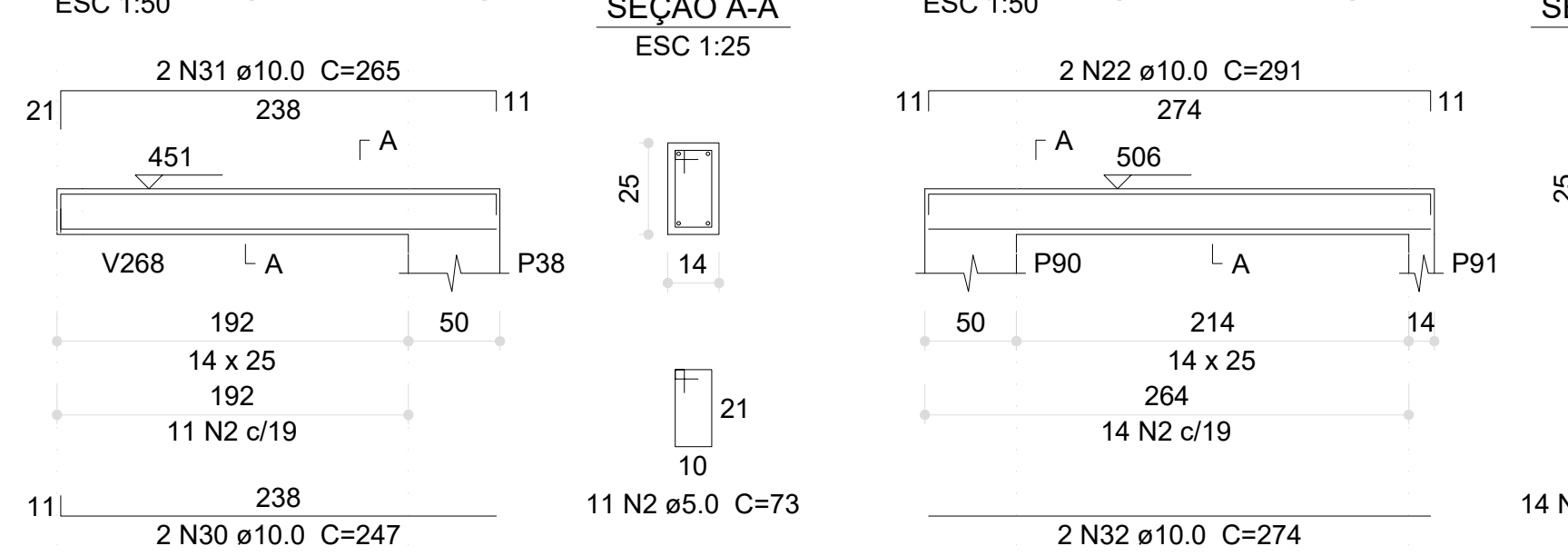
V208 (14 x 25)



V209 (14 x 25)



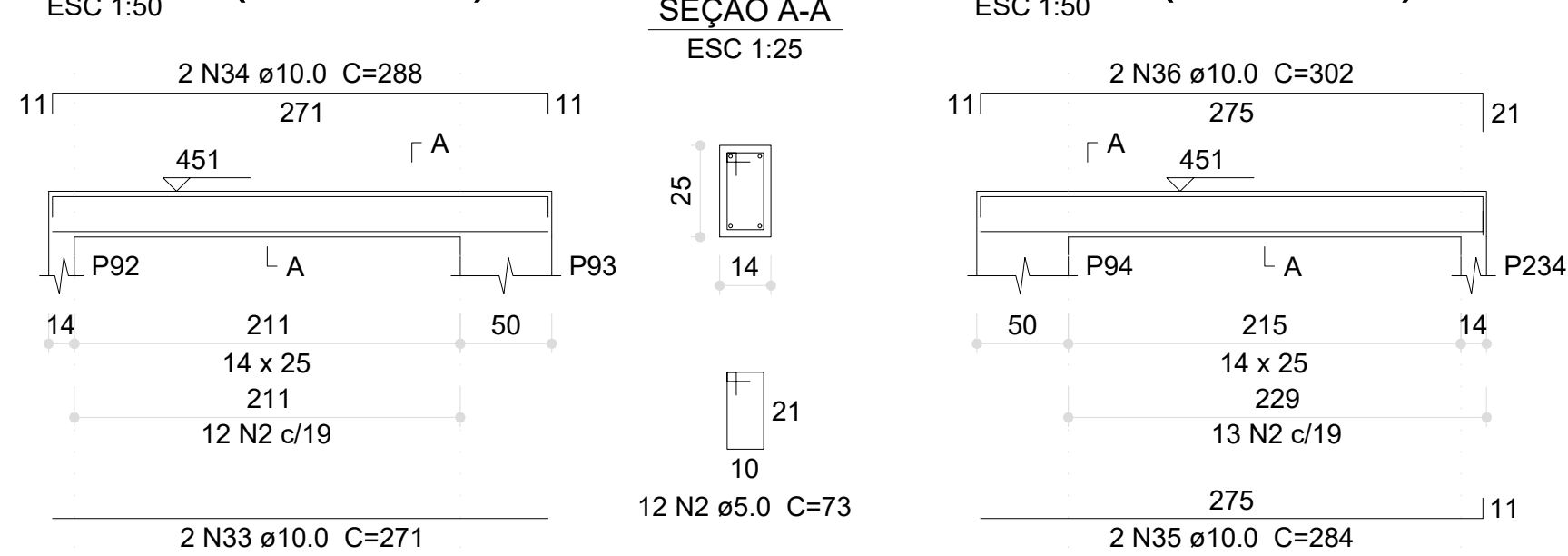
V210 (14 x 25)



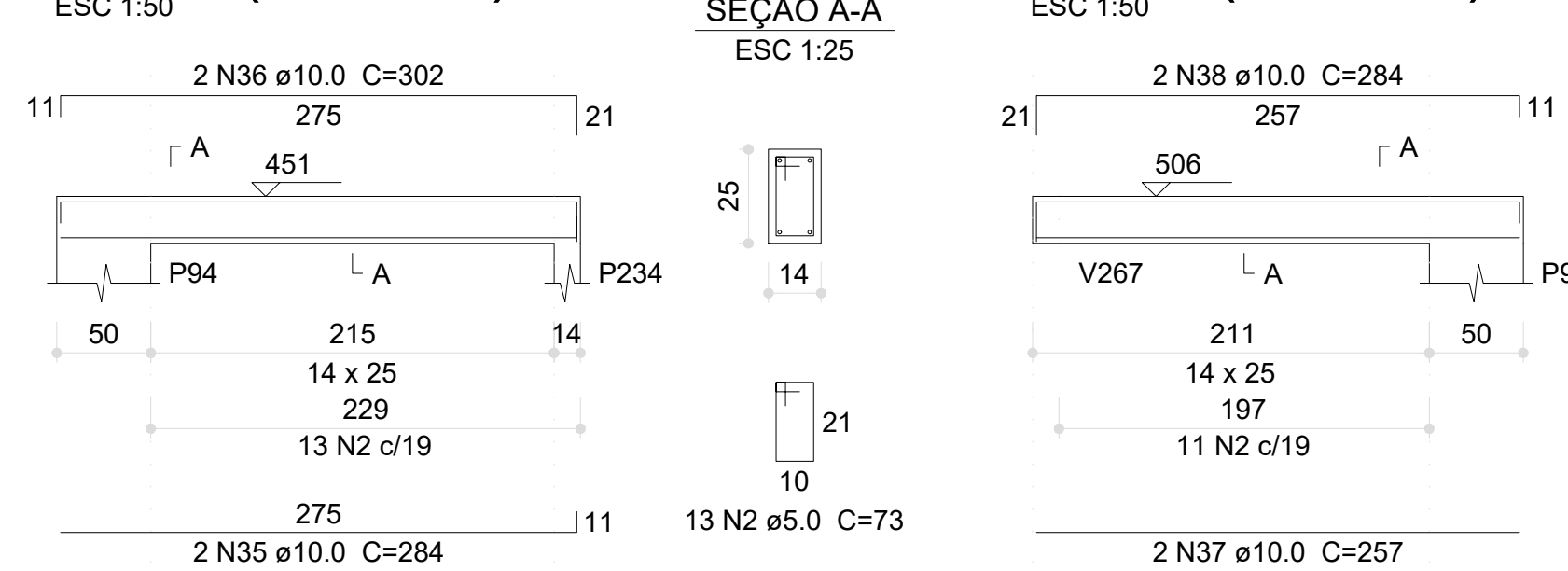
V211 (14 x 25)



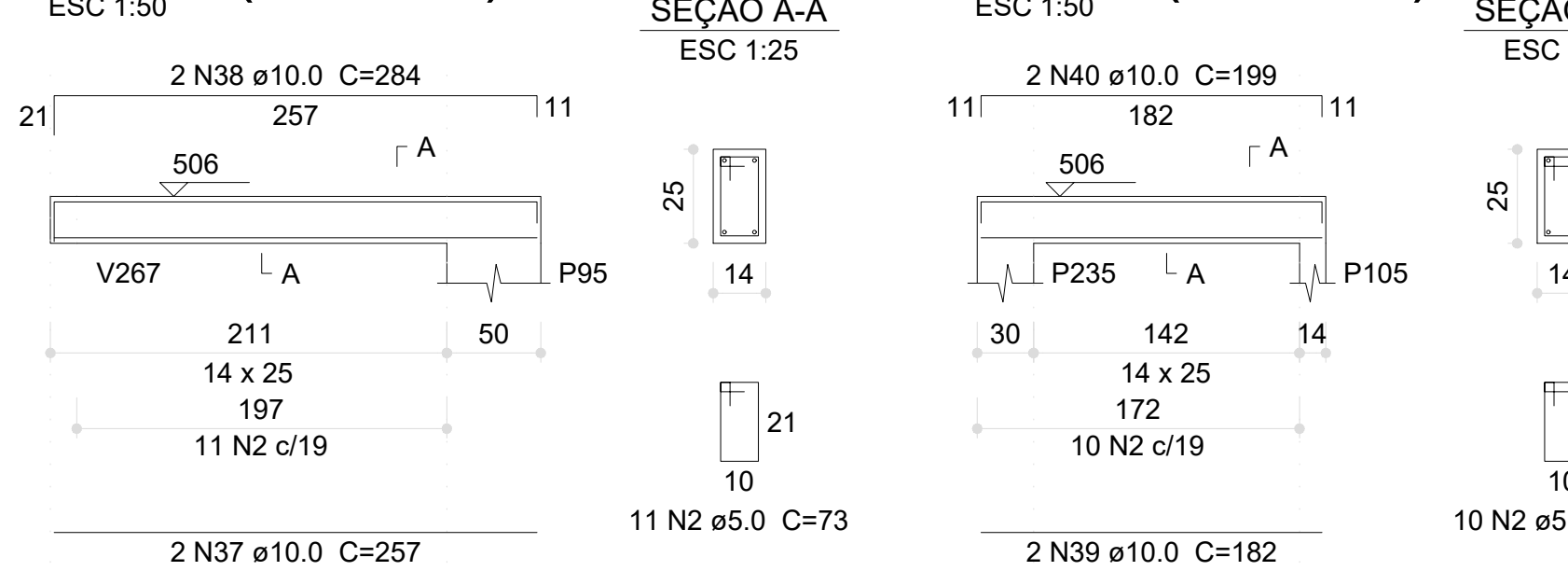
V212 (14 x 25)



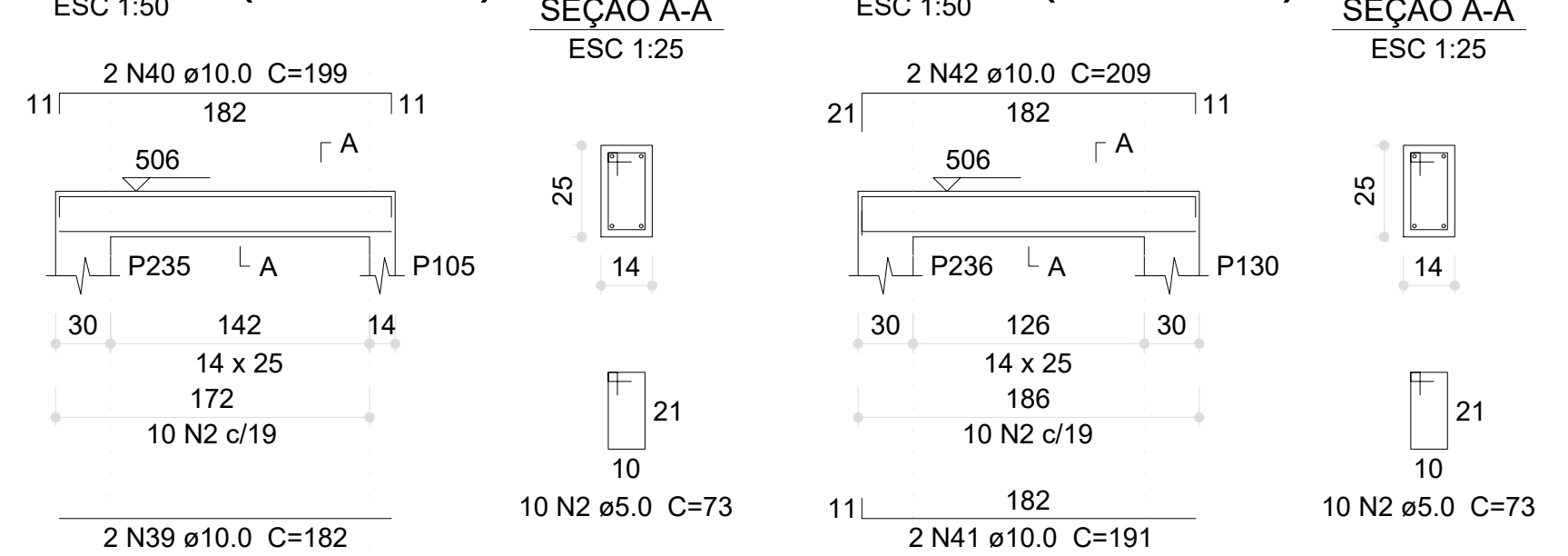
V213 (14 x 25)



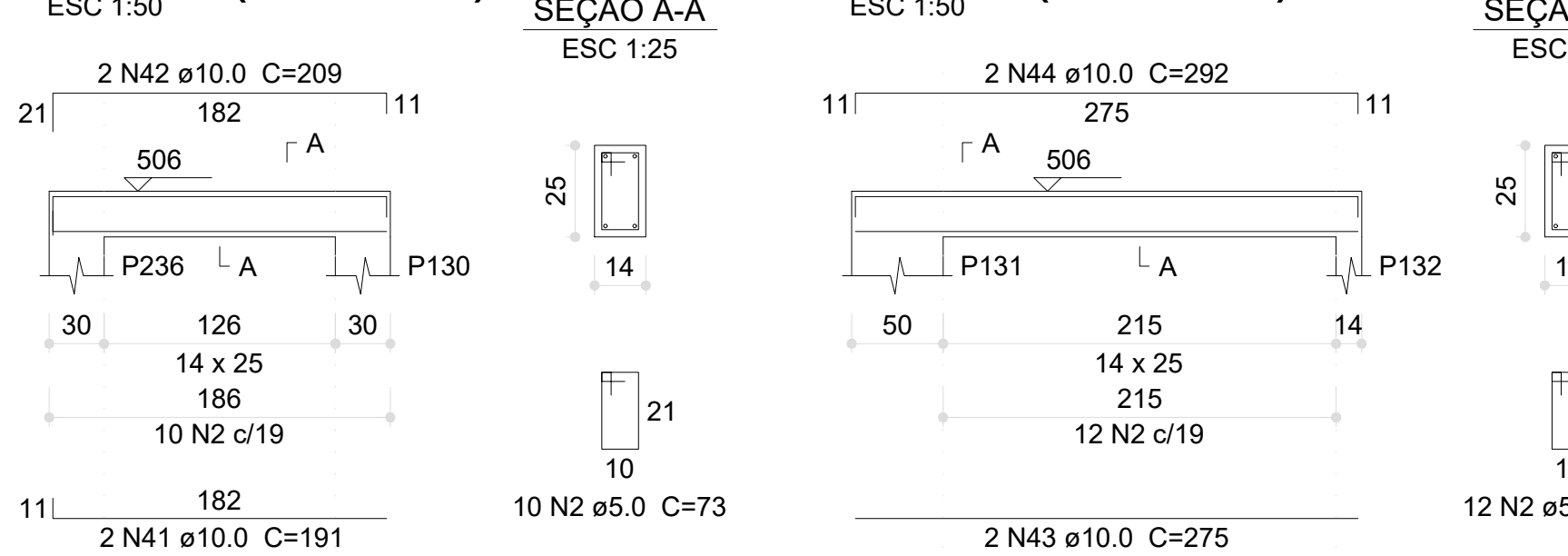
V214 (14 x 25)



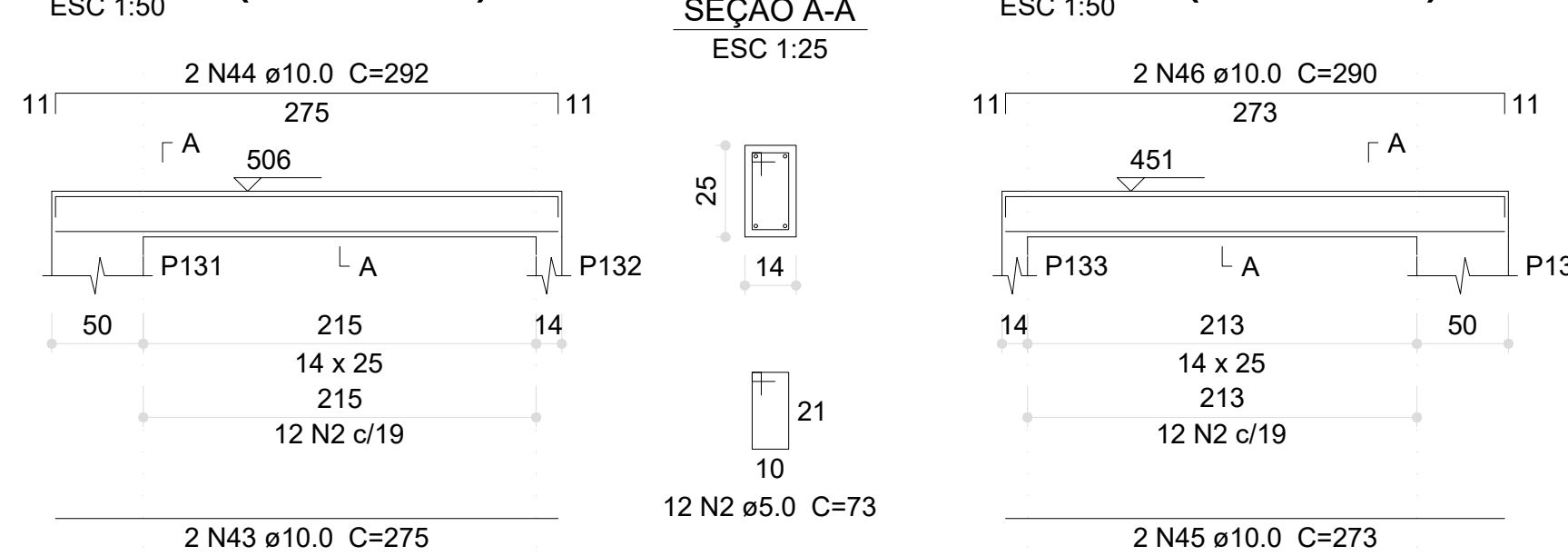
V215 (14 x 25)



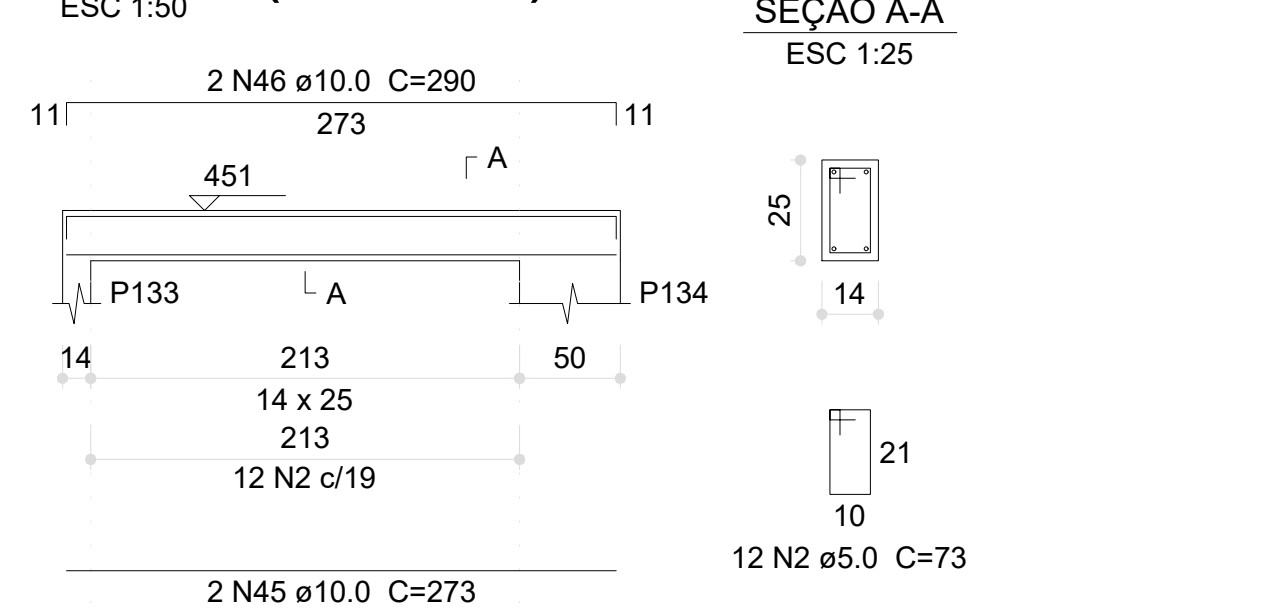
V216 (14 x 25)



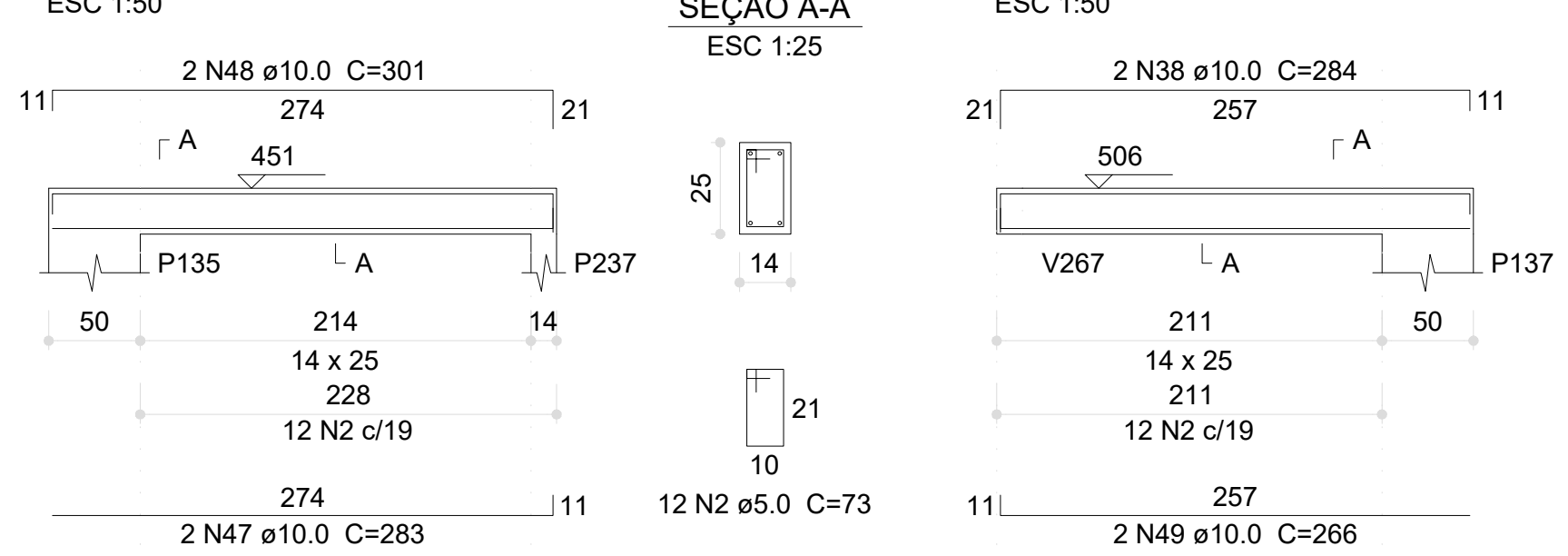
V217 (14 x 25)



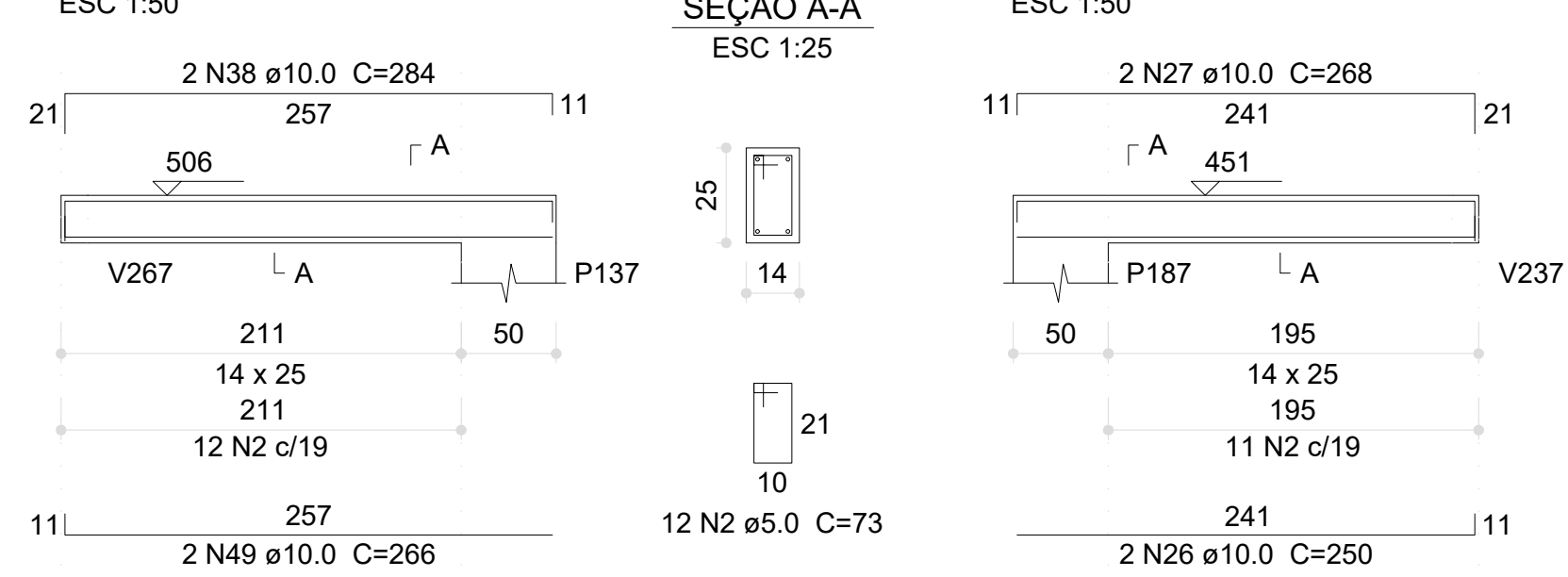
V218 (14 x 25)



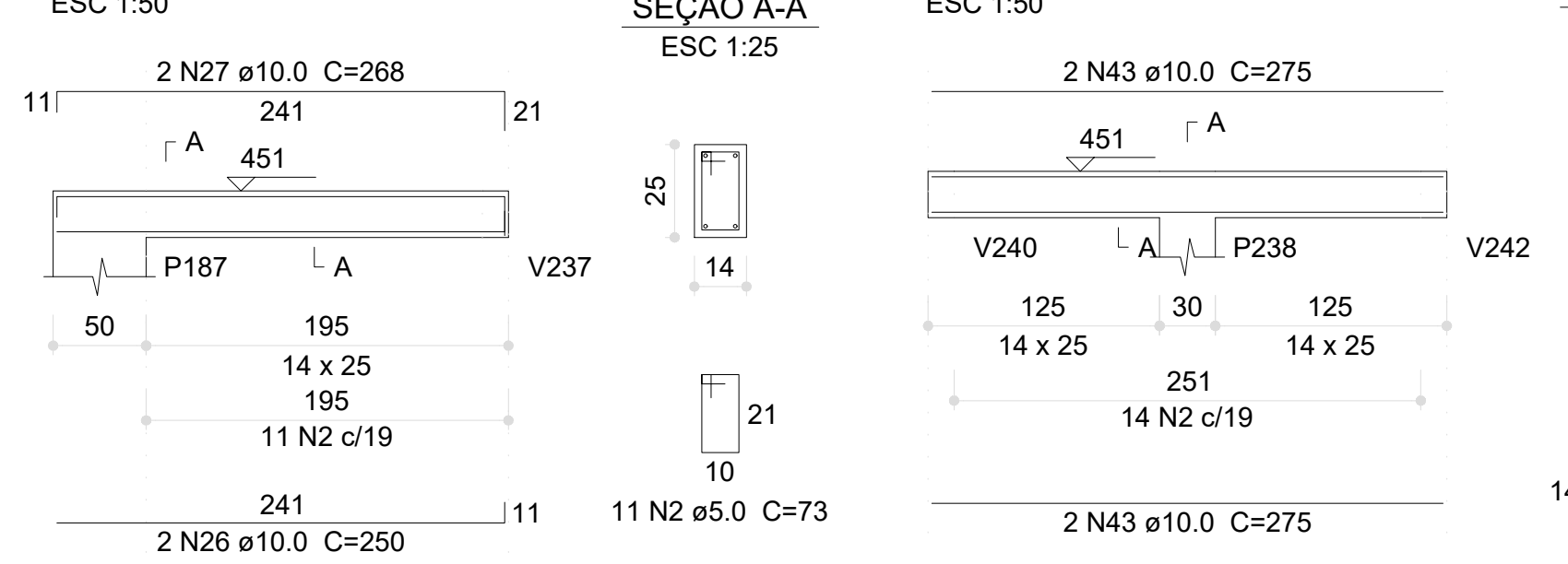
V219 (14 x 25)



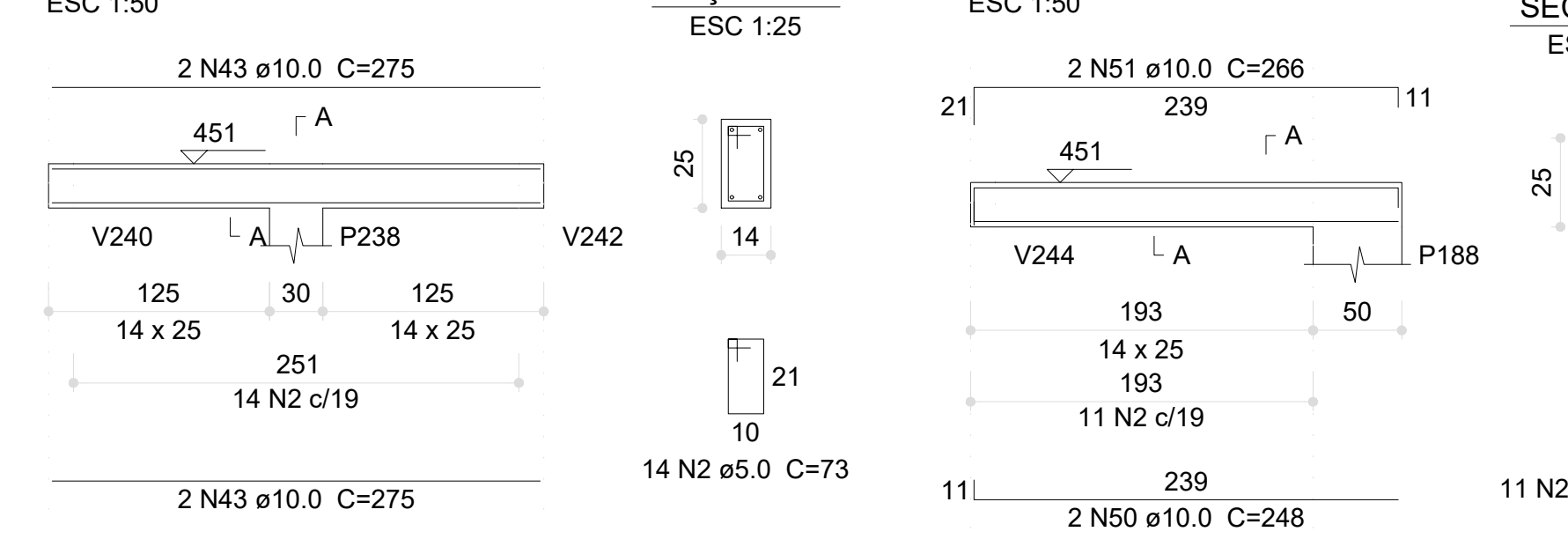
V220 (14 x 25)



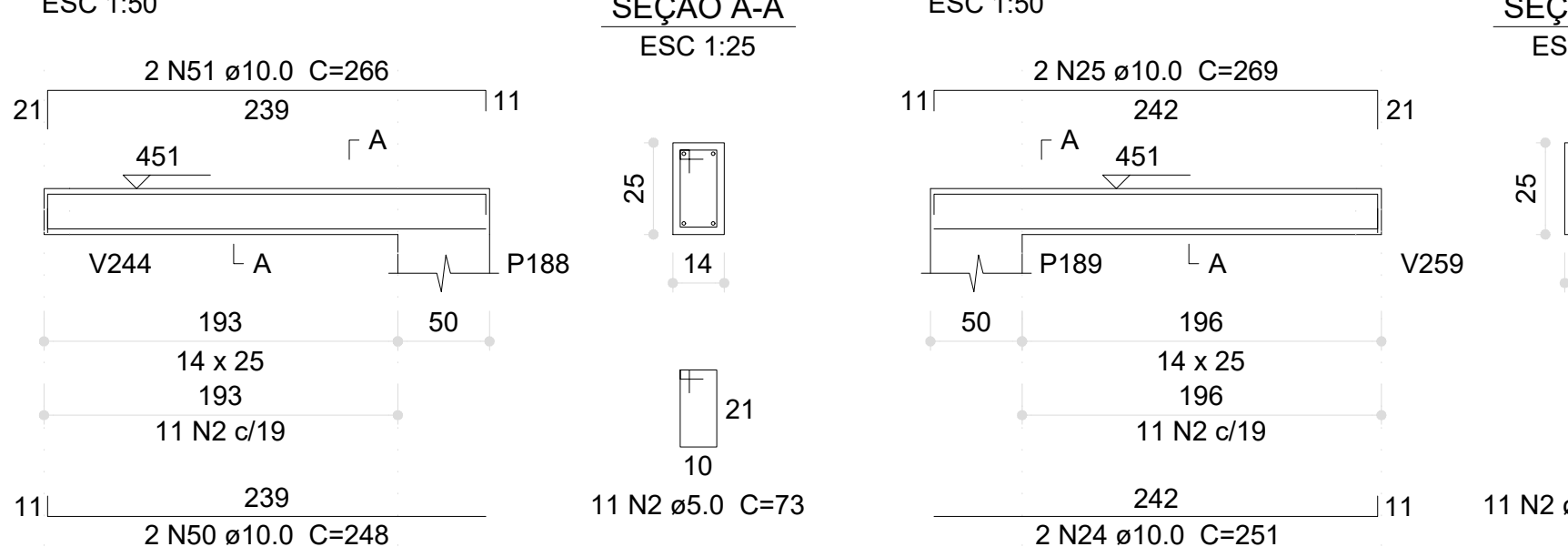
V221 (14 x 25)



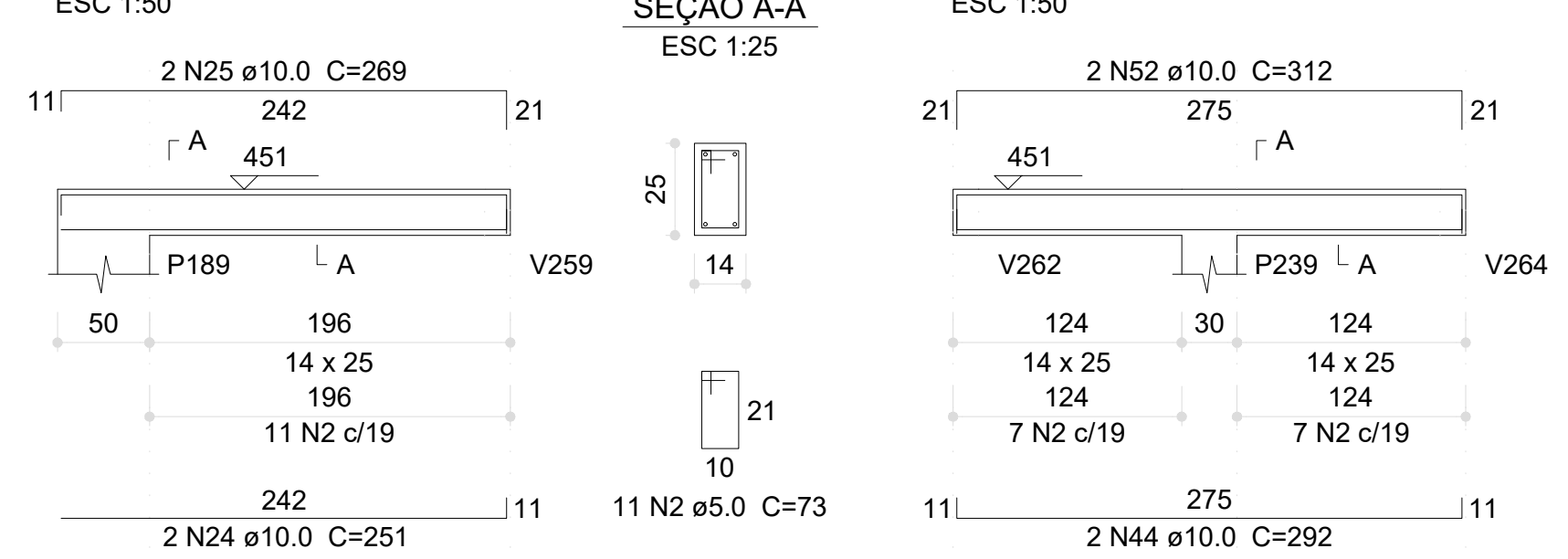
V222 (14 x 25)



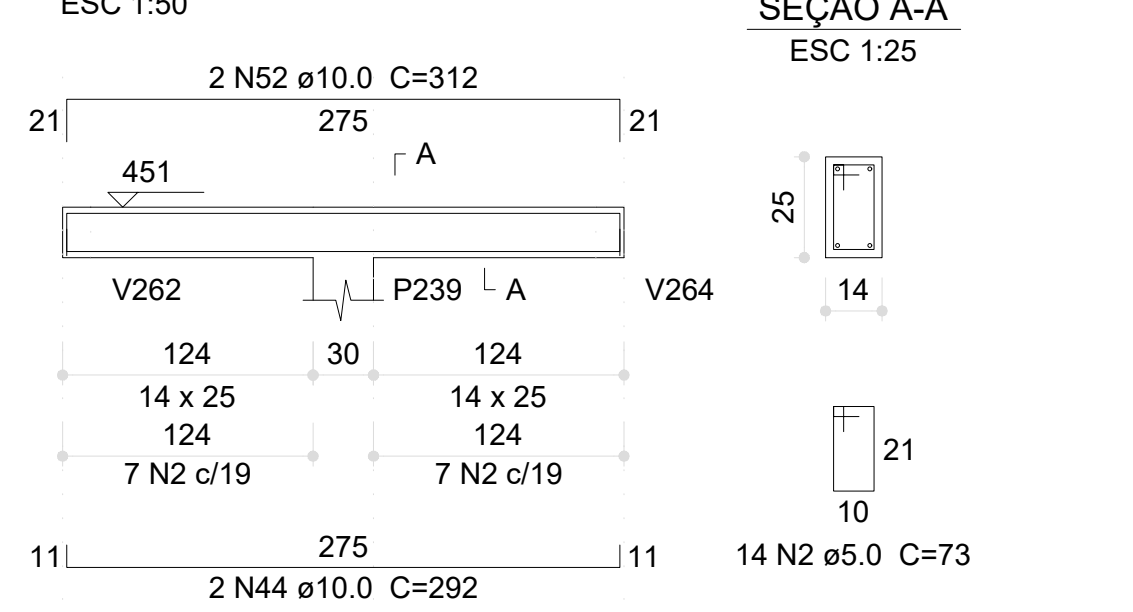
V223 (14 x 25)



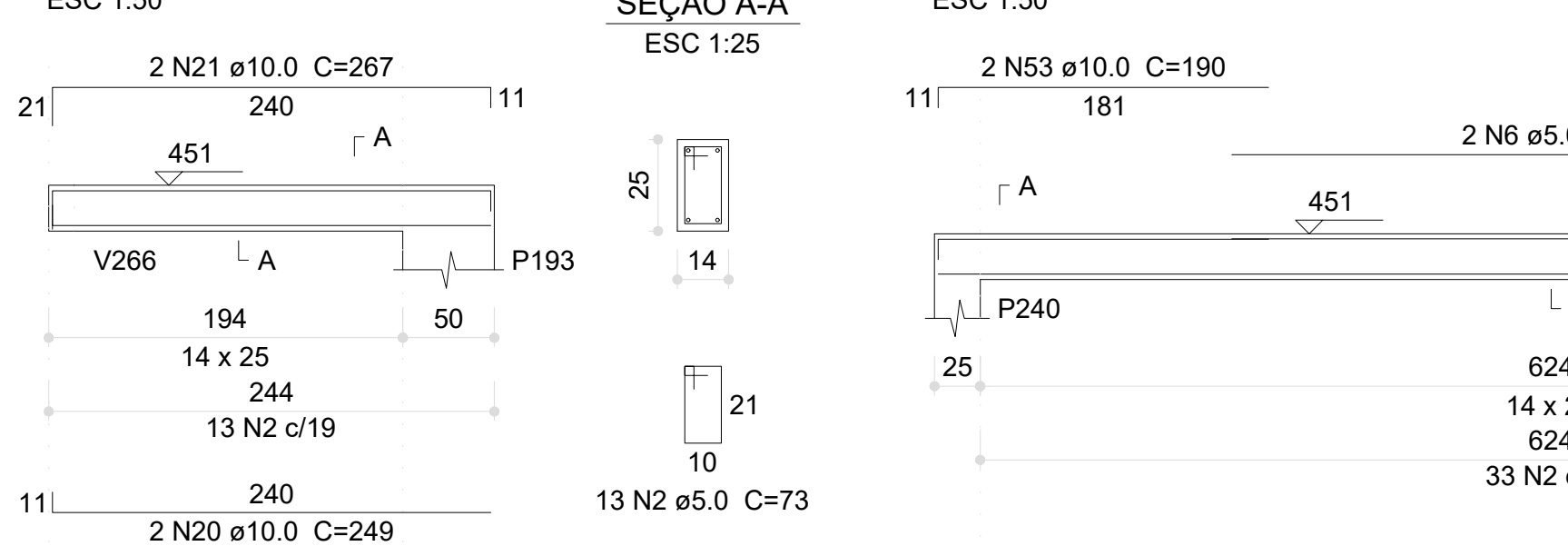
V224 (14 x 25)



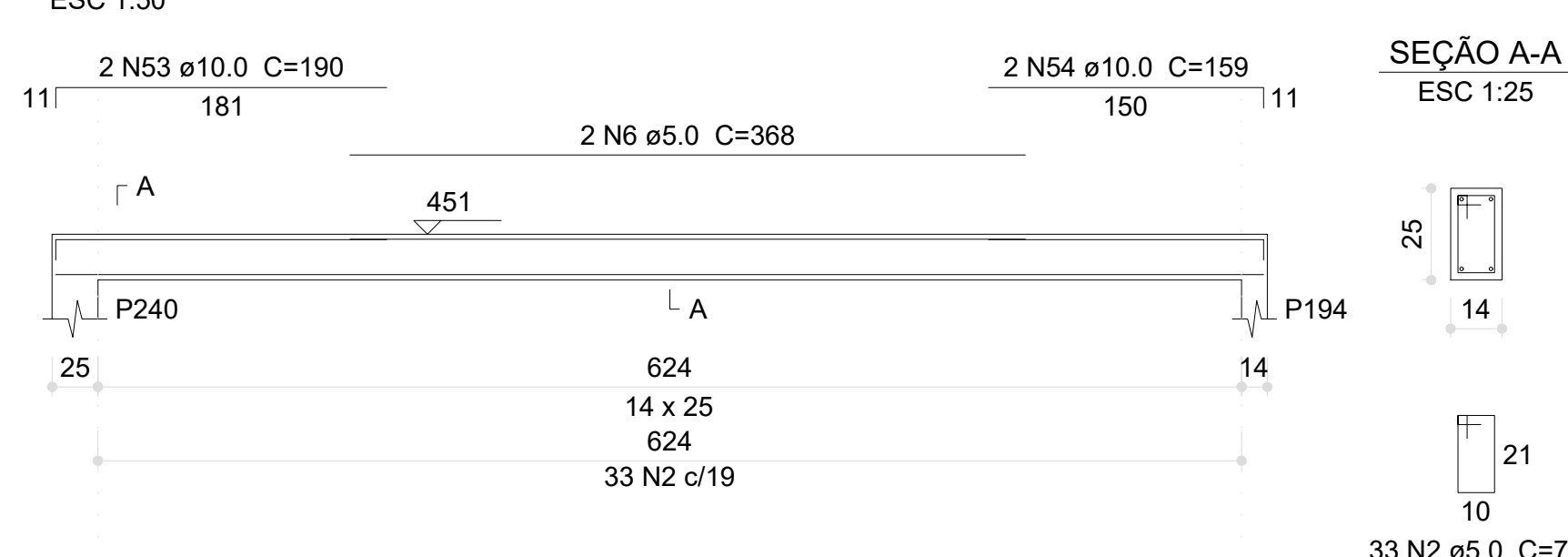
V225 (14 x 25)



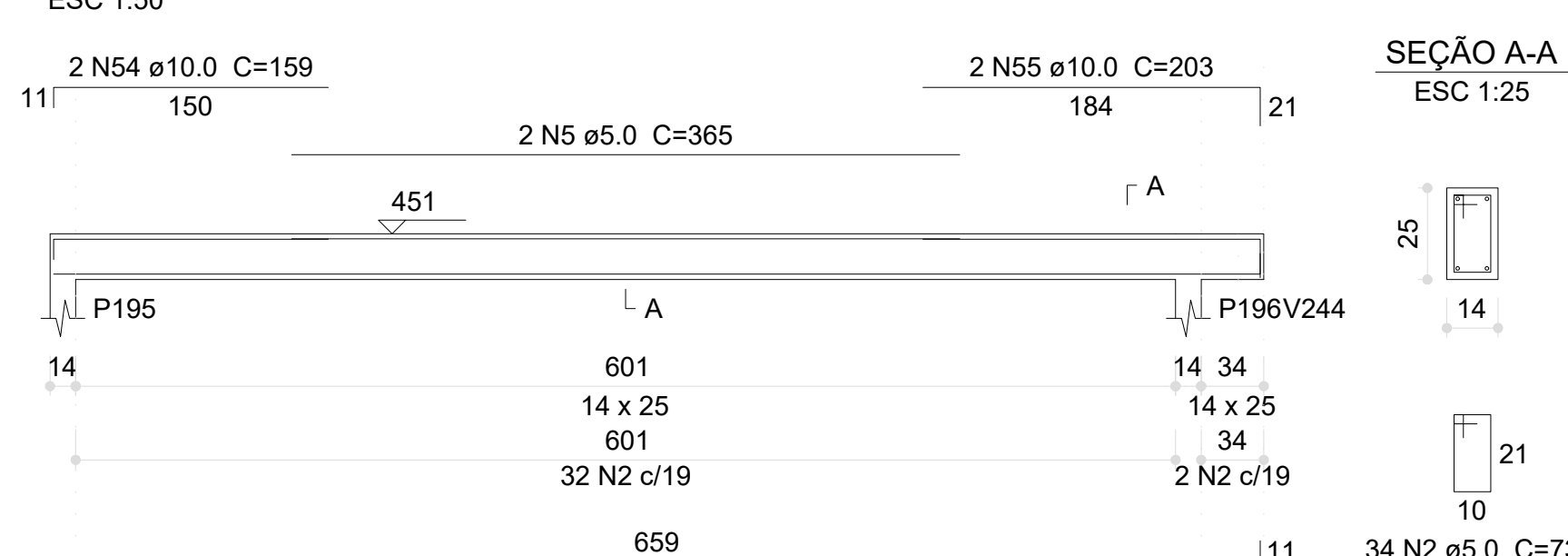
V226 (14 x 25)



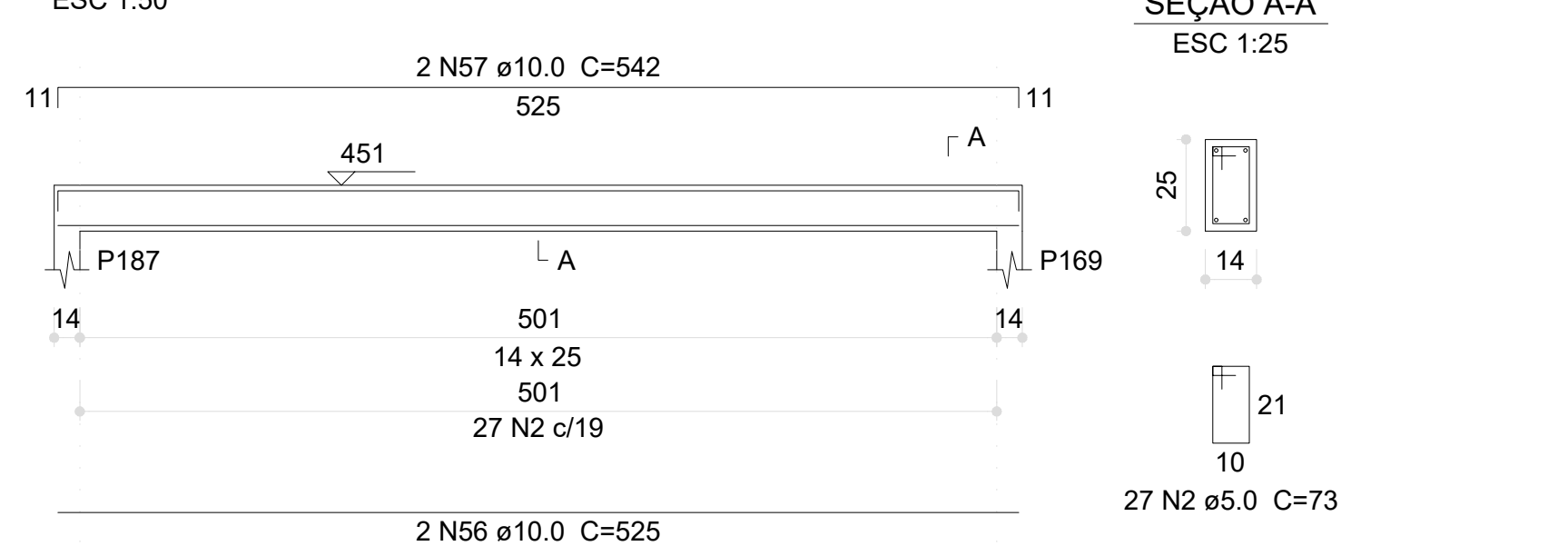
V227 (14 x 25)



V228 (14 x 25)



V231 (14 x 25)

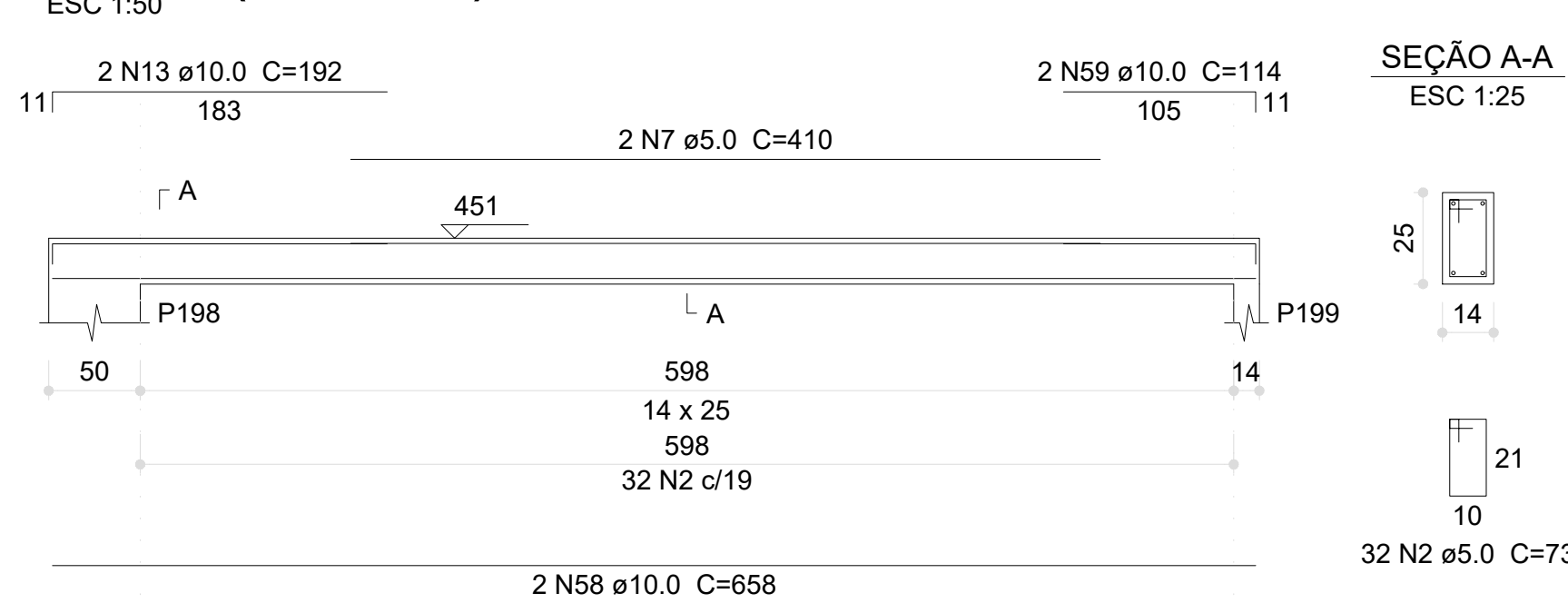


Resumo do aço

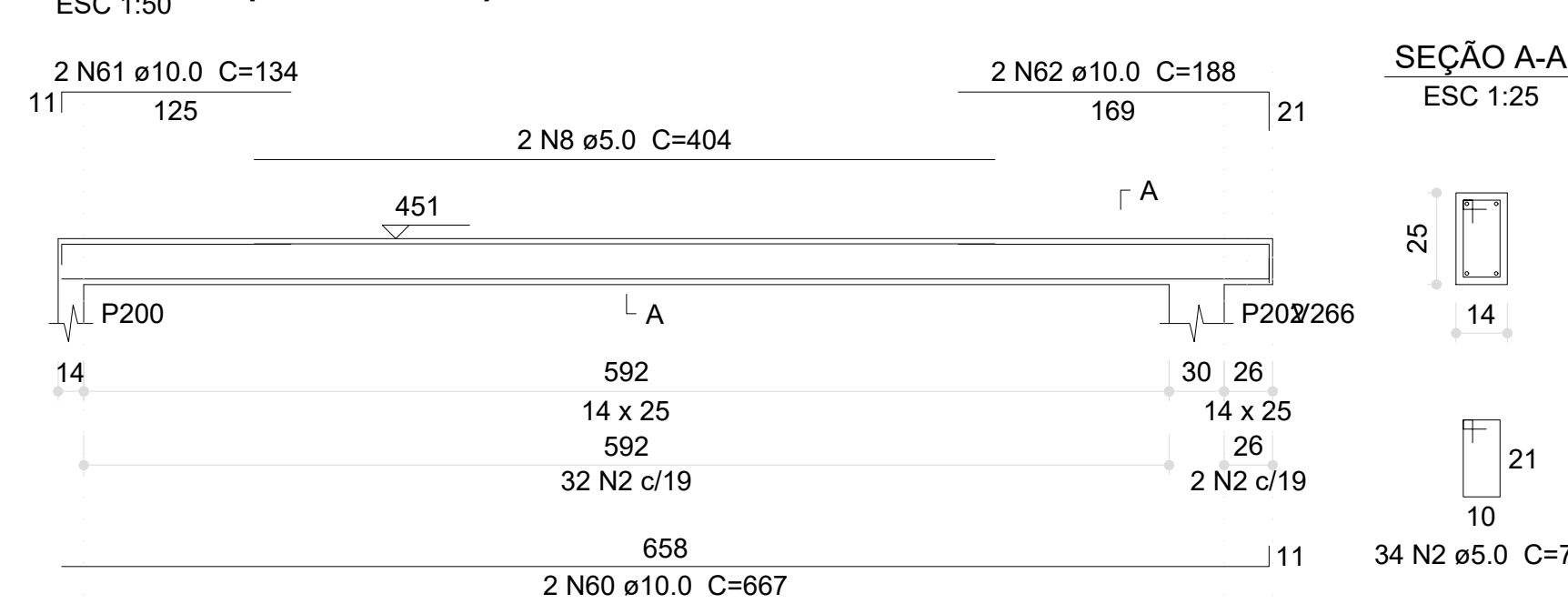
AÇO	DIAM (mm)	C.TOTAL (m)	PESO (kg)
CA50	10.0	516.5	318.4
CA60	5.0	558.5	318.4
PESO TOTAL (kg)			86.1

Volume de concreto (C-30) = 4.19 m³
Área de forma = 76.53 m²

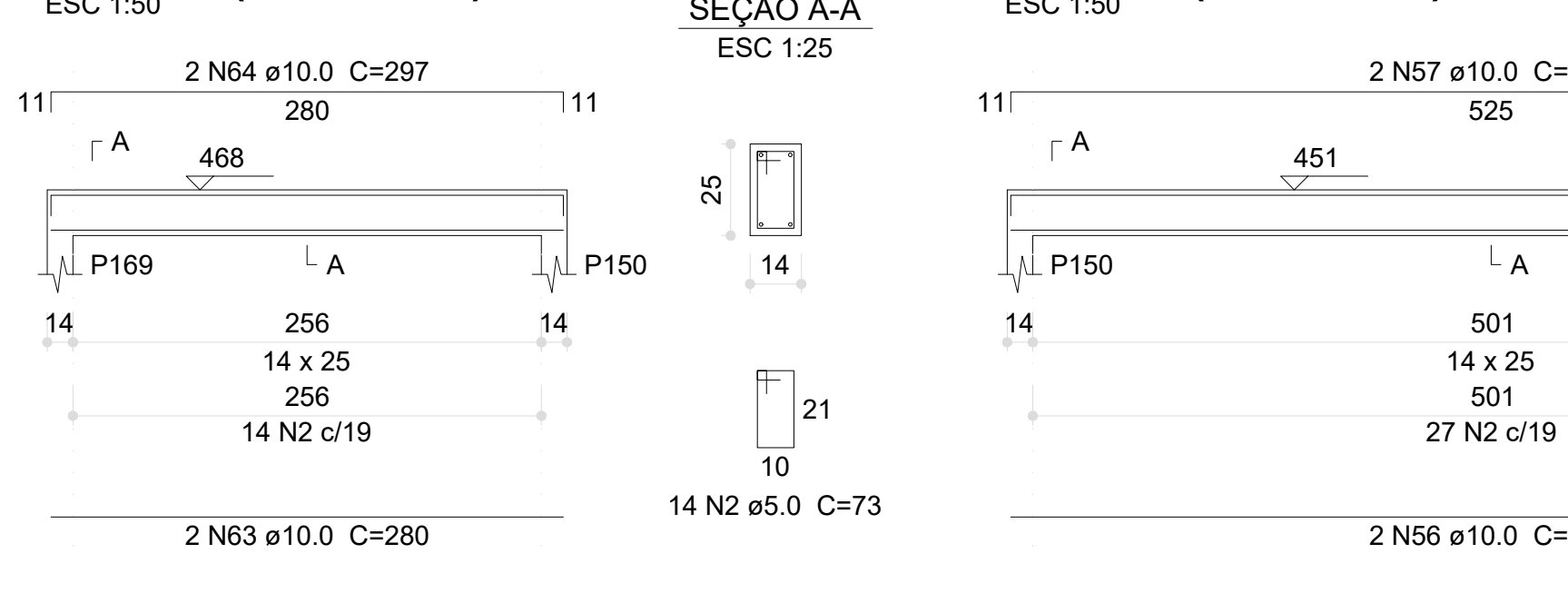
V229 (14 x 25)



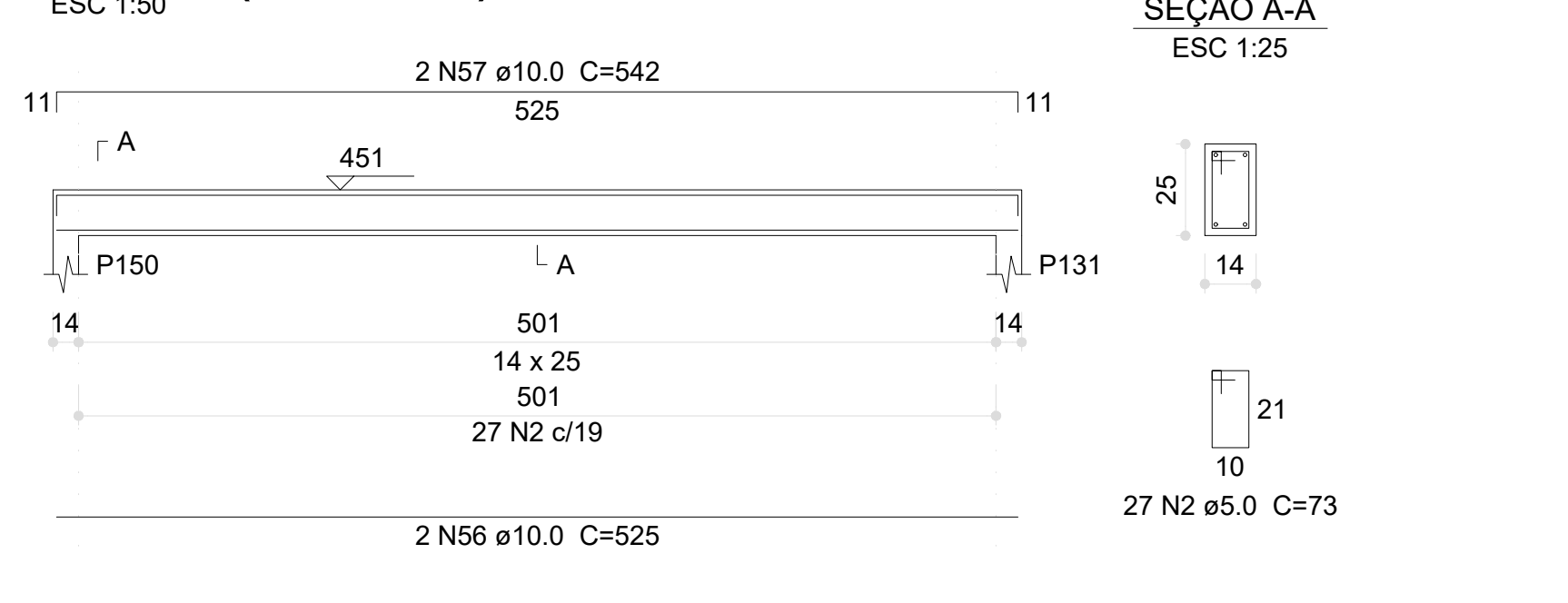
V230 (14 x 25)



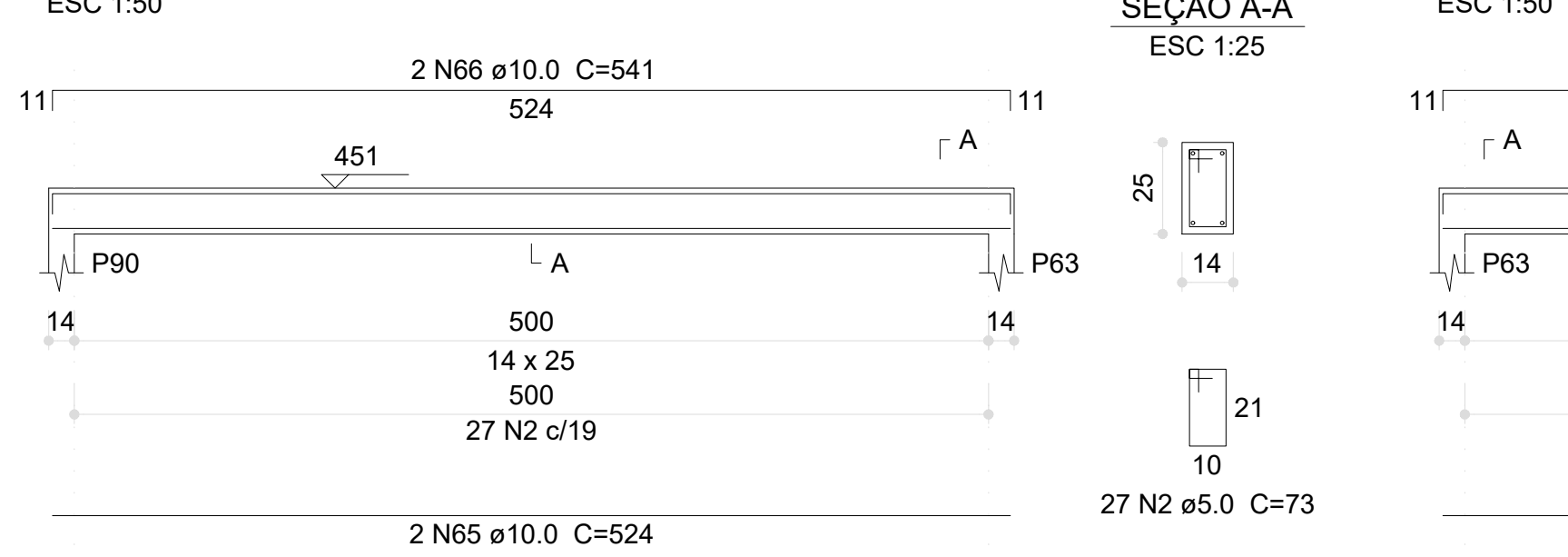
V232 (14 x 25)



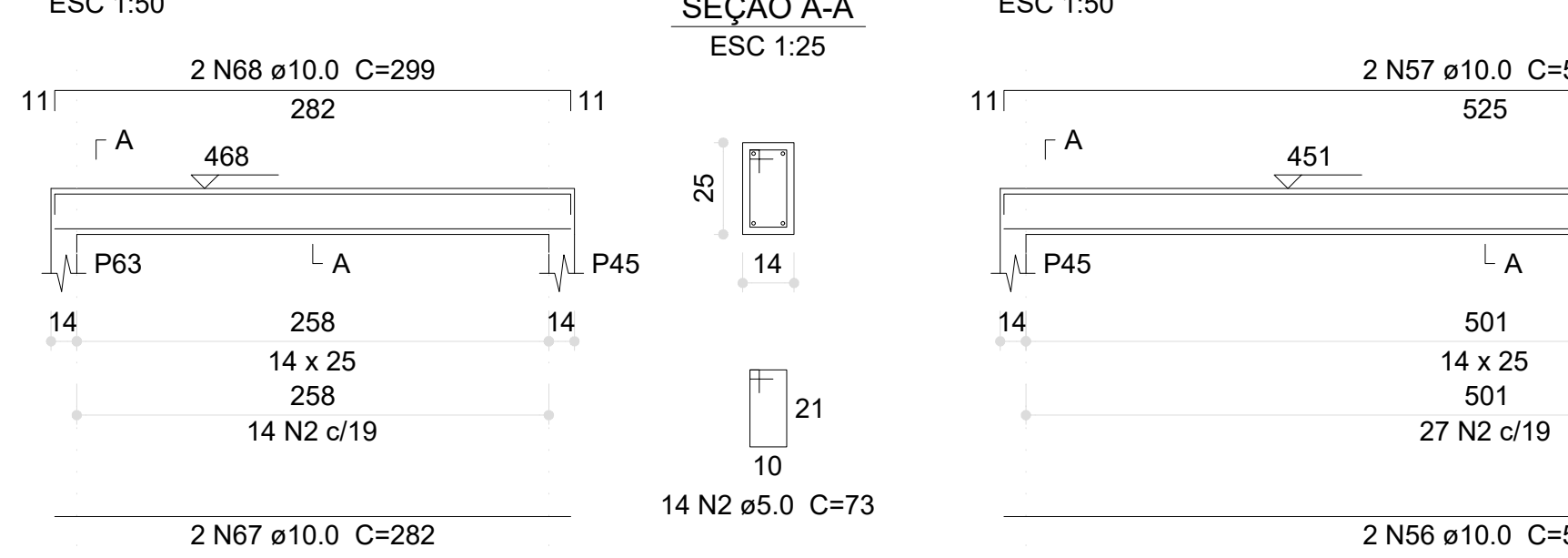
V233 (14 x 25)



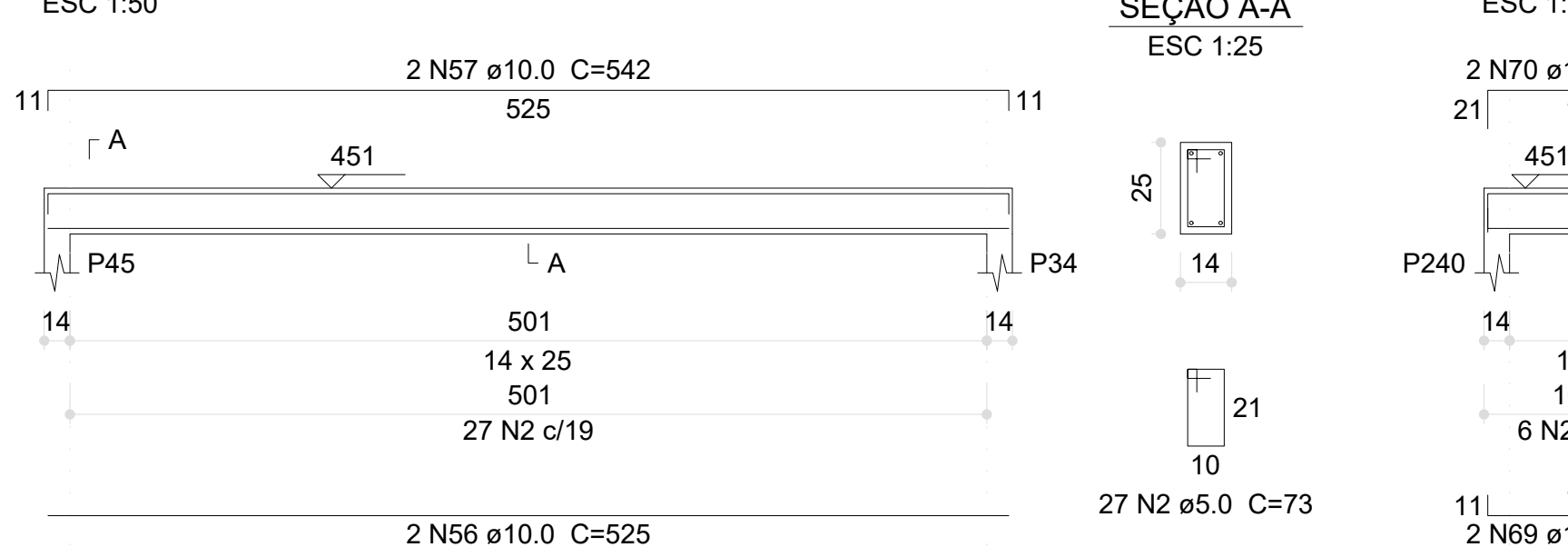
V234 (14 x 25)



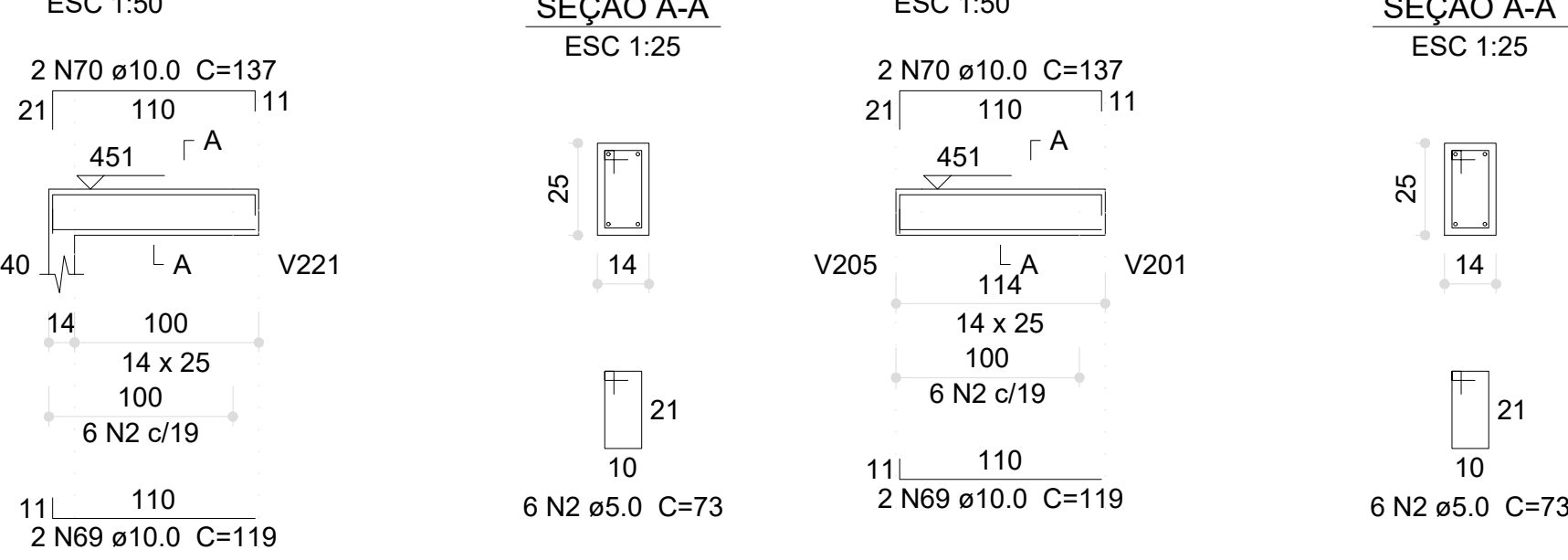
V235 (14 x 25)



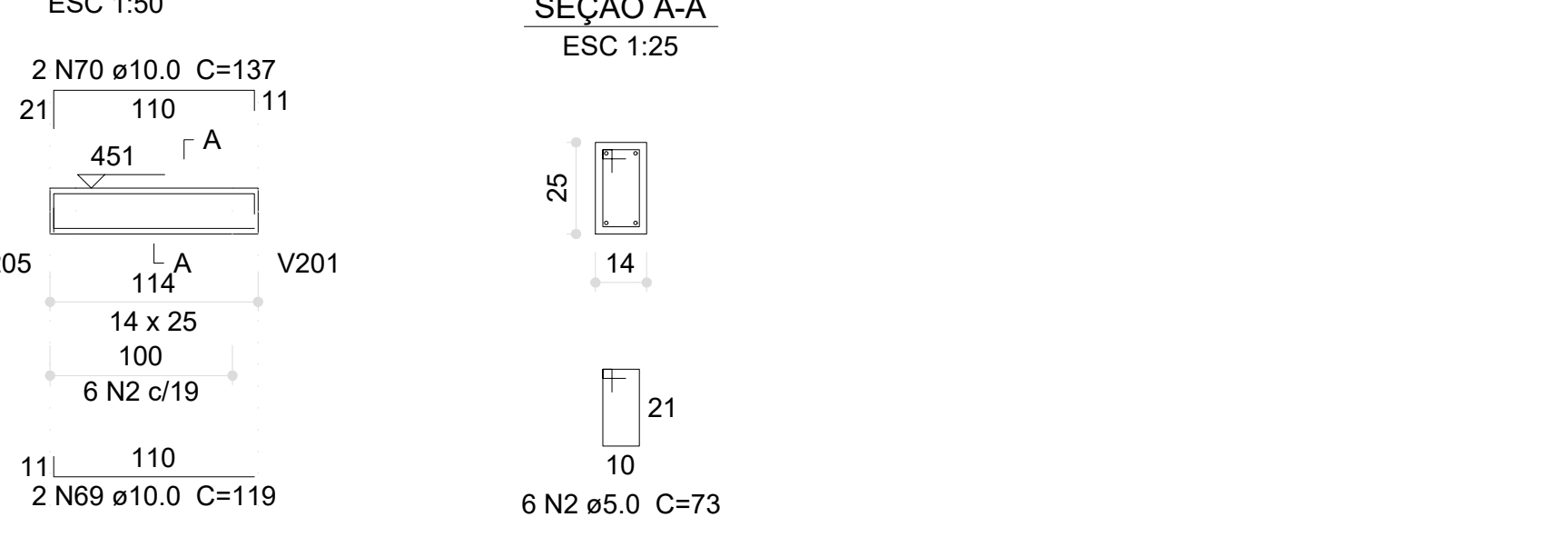
V236 (14 x 25)



V237 (14 x 25)



V239 (14 x 25)



Relação do aço

AÇO	N	DIAM (mm)	QUANT	C.UNIT (cm)	C.TOTAL (cm)
CA60	1	5.0	2	348	696
	2	5.0	683	73	49859
	3	5.0	2	351	702
	4	5.0	2	384	768
	5	5.0	4	365	1460
	6	5.0	2	368	736
	7	5.0	2	410	820
	8	5.0	2	404	808
CA50	9	10.0	6	668	4008
	10	10.0	2	201	402
	11	10.0	2	179	358
	12	10.0	2	657	1314
	13	10.0	4	192	768
	14	10.0	2	172	344
	15	10.0	4	659	2636
	16	10.0	2	147	294
	17	10.0	2	197	394
	18	10.0	2	139	278
	19	10.0	2	223	446
	20	10.0	4	249	996
	21	10.0	4	267	1068
	22	10.0	4	291	1164
	23	10.0	2	311	622
	24	10.0	4	251	1004
	25	10.0	4	269	1076
	26	10.0	4	250	1000
	27	10.0	4	268	1072
	28	10.0	2	293	586
	29	10.0	2	313	626
	30	10.0	2	247	494
	31	10.0	2	265	530
	32	10.0	2	274	548
	33	10.0	2	271	542
	34	10.0	2	288	576
	35	10.0	2	284	568
	36	10.0	2	302	604
	37	10.0	2	257	514
	38	10.0	4	284	1136
	39	10.0	2	182	364
	40	10.0	2	199	398
	41	10.0	2	191	382
	42	10.0	2	209	418
	43	10.0	6	275	1650
	44	10.0	4	292	1168
	45	10.0	2	273	546
	46	10.0	2	290	580
	47	10.0	2	283	566
	48	10.0	2	301	602
	49	10.0	2	266	532
	50	10.0	2	246	490
	51	10.0	2	266	532
	52	10.0	2	312	624
	53	10.0	2	190	380
	54	10.0	4	159	636
	55	10.0	2	203	406
	56	10.0	6	525	3150
	57	10.0	6	542	3252
	58	10.0	2	658	1316
	59	10.0	2	114	228
	60	10.0	2	667	1334
	61	10.0	2	134	268
	62	10.0	2	188	376
	63	10.0	2	280	560
	64	10.0	2	297	594
	65	10.0	2	524	1048
	66	10.0	2	541	1082
	67	10.0	2	282	564
	68	10.0	2	299	598
	69	10.0	4	119	476
	70	10.0	4	137	548