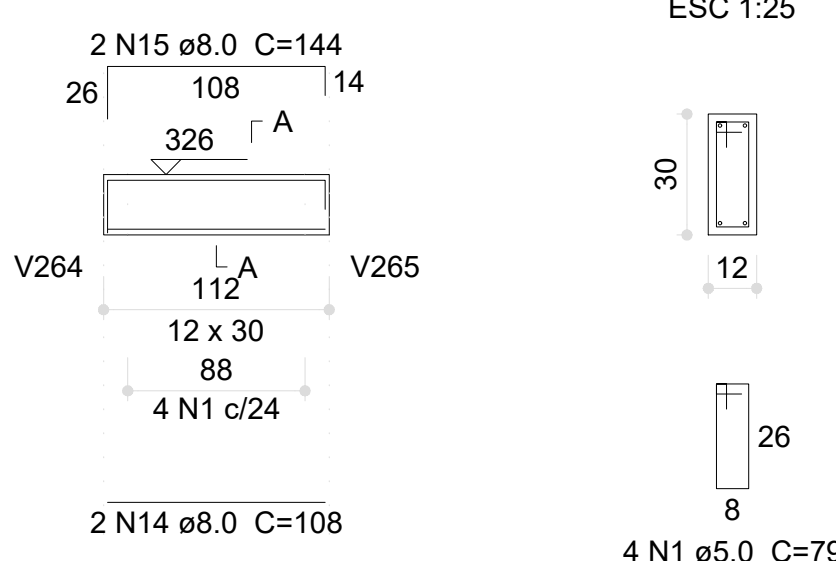
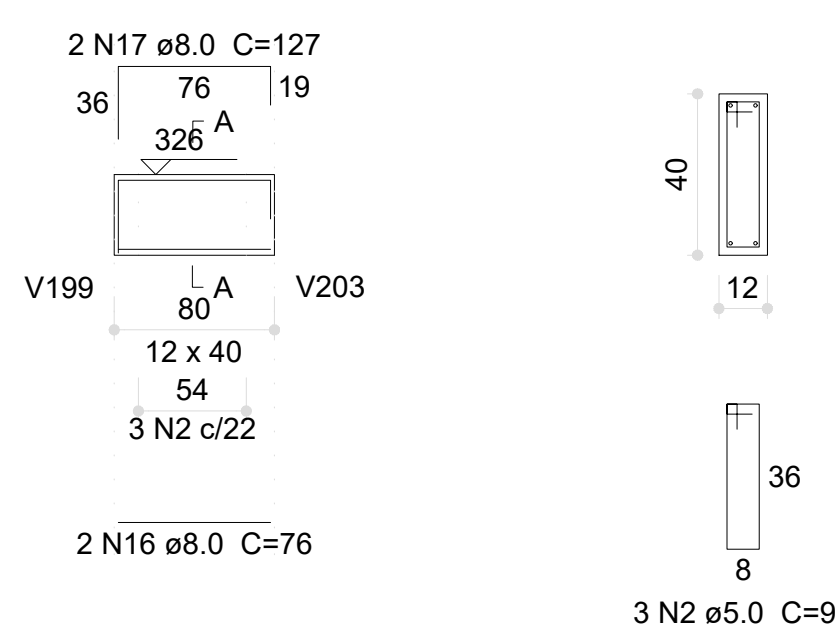


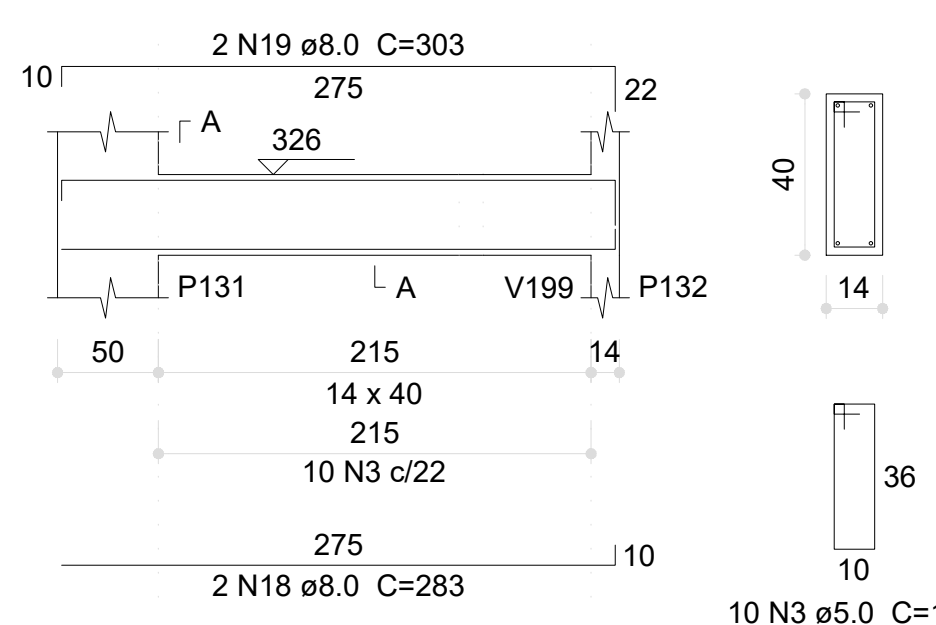
V148 (12 x 30)



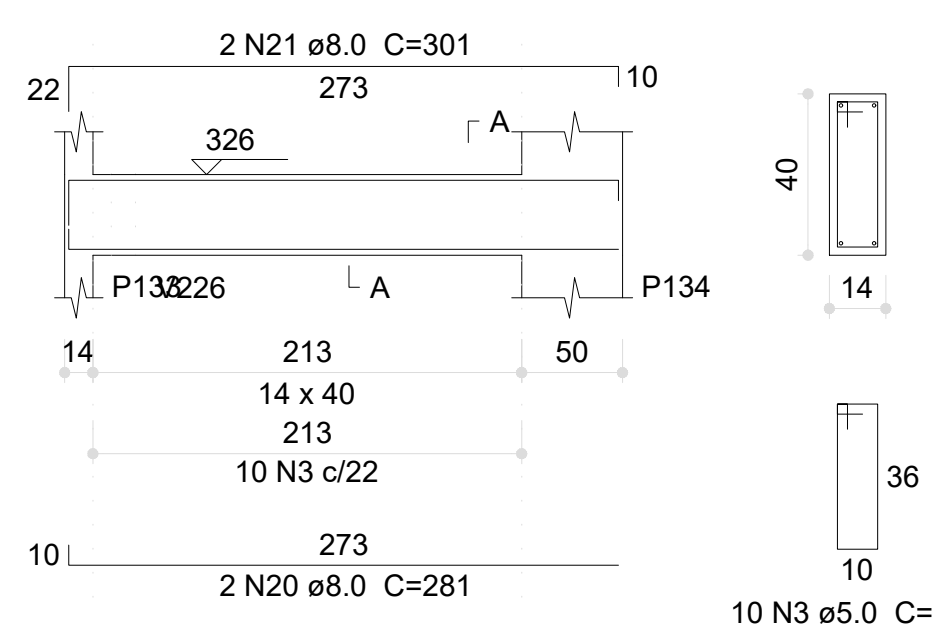
V149 (12 x 40)



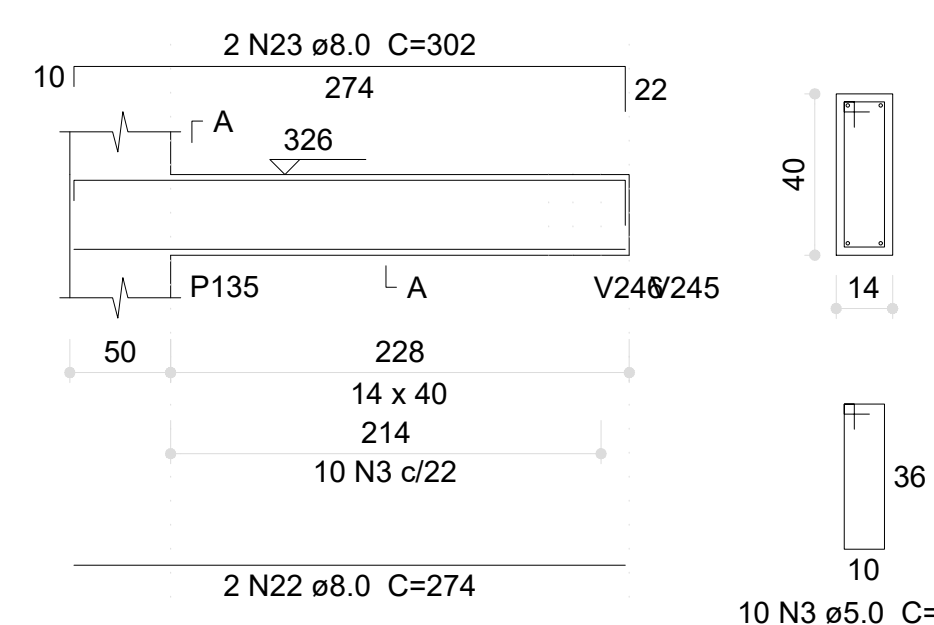
V150 (14 x 40)



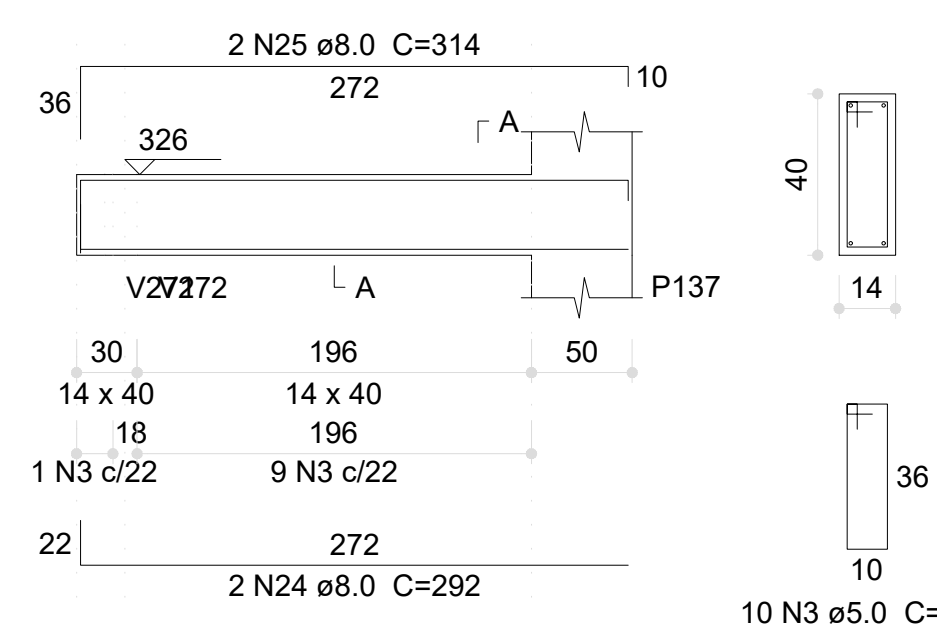
V151 (14 x 40)



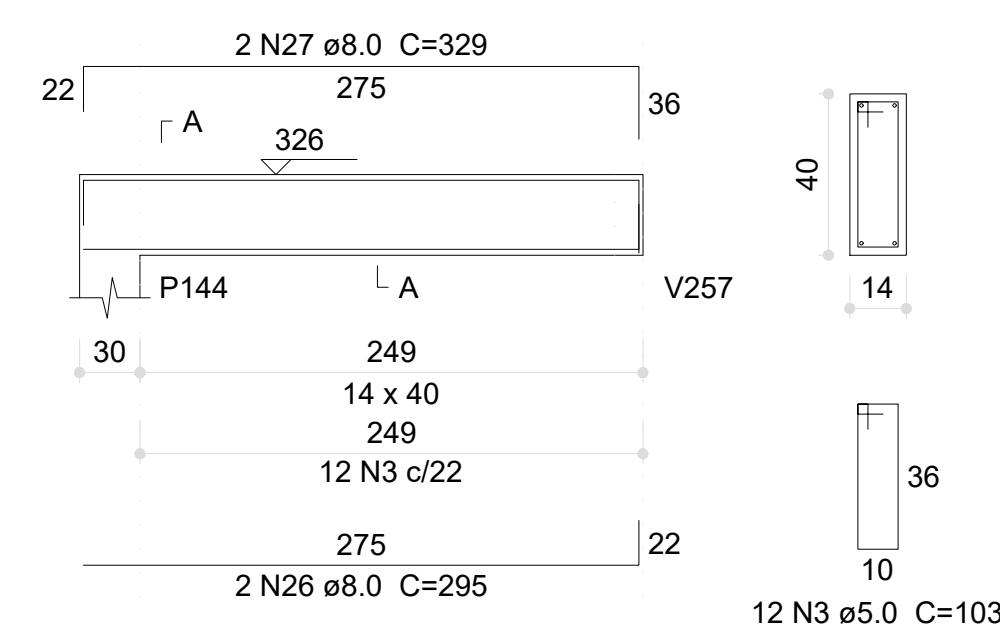
V152 (14 x 40)



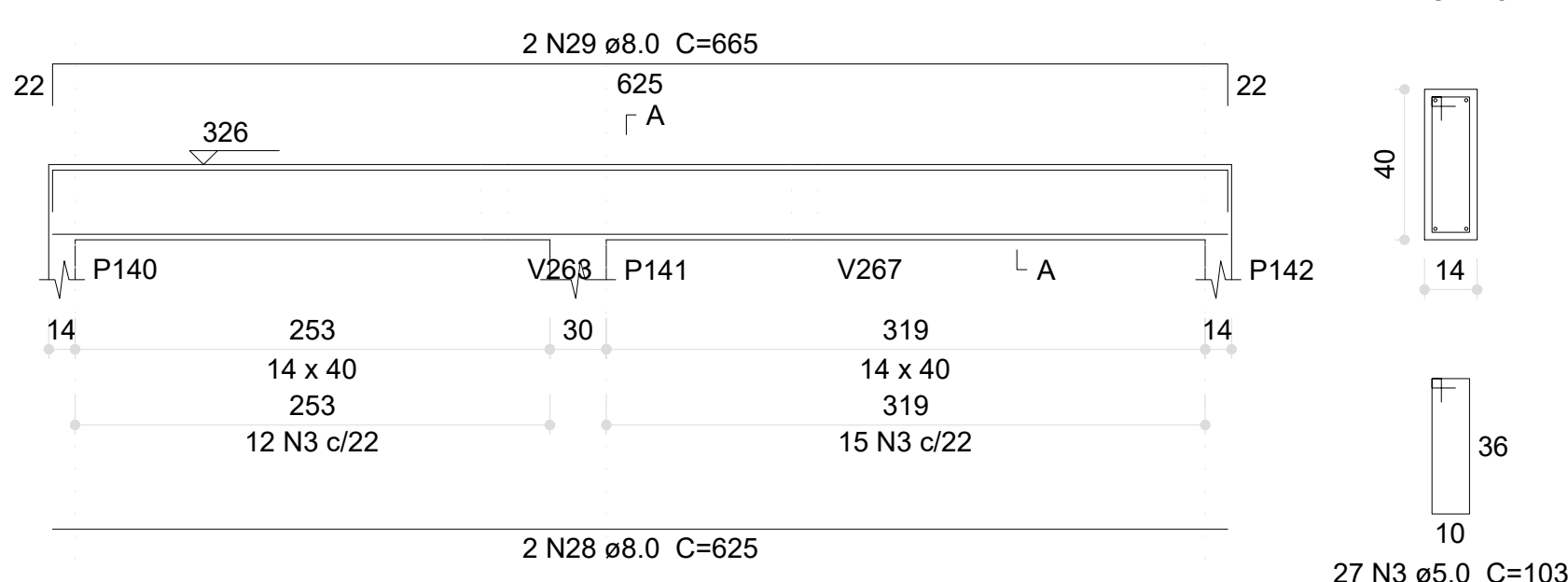
V153 (14 x 40)



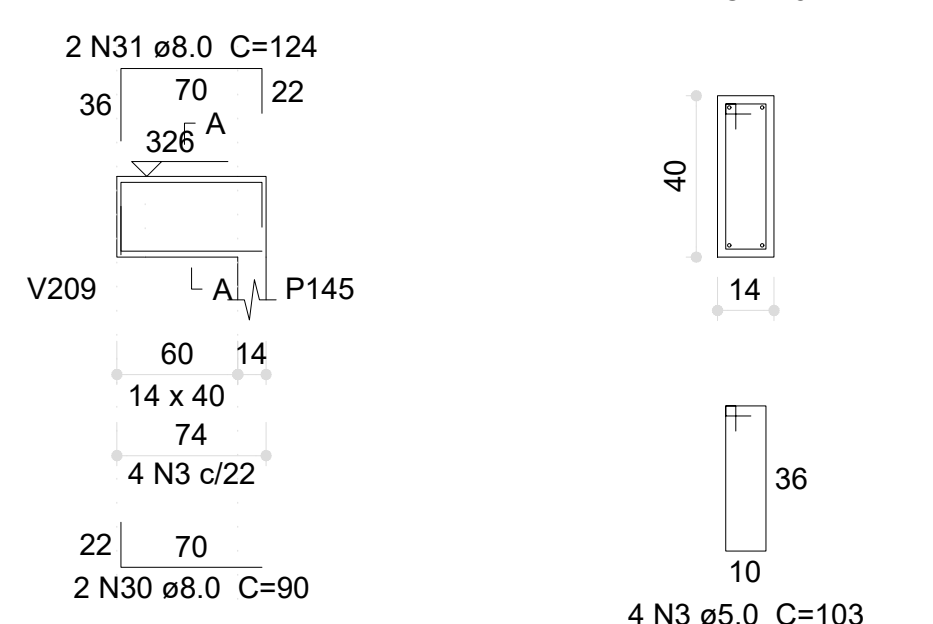
V155 (14 x 40)



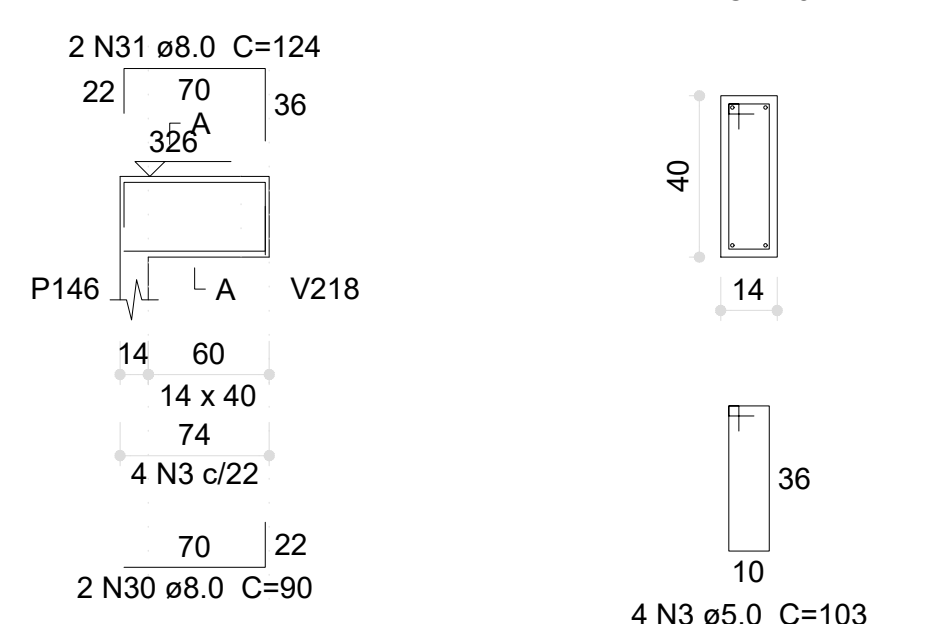
V154 (14 x 40)



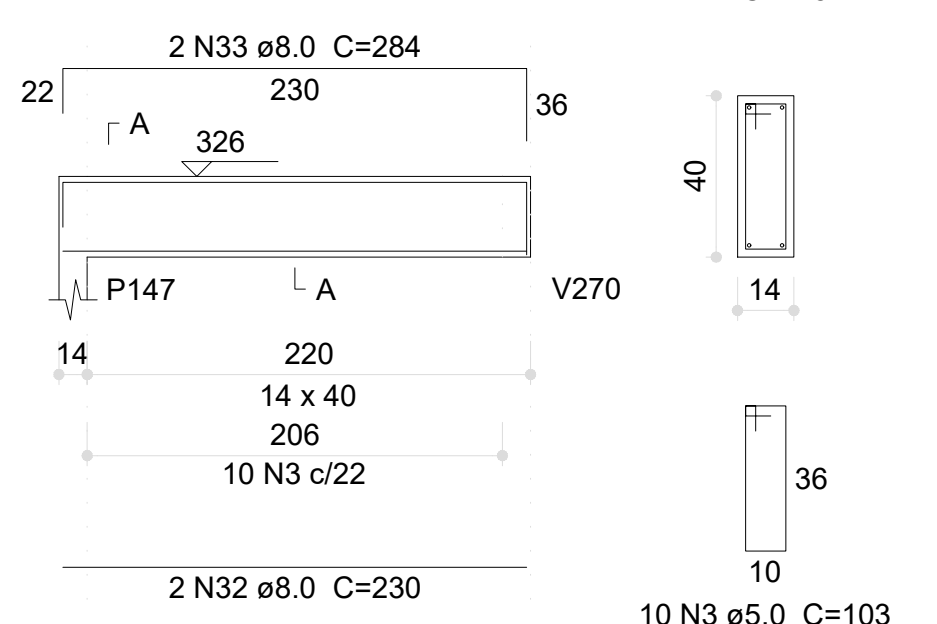
V156 (14 x 40)



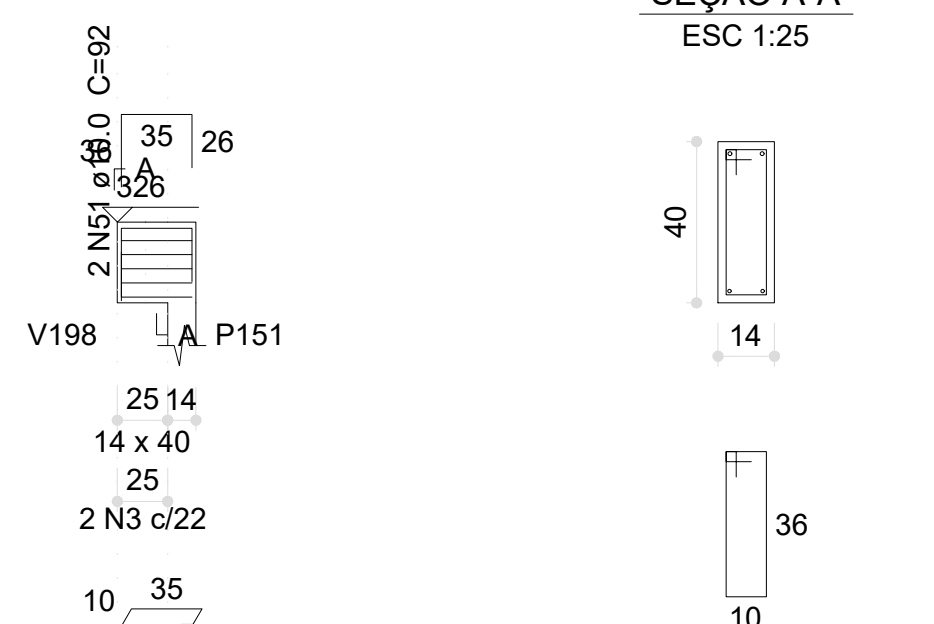
V157 (14 x 40)



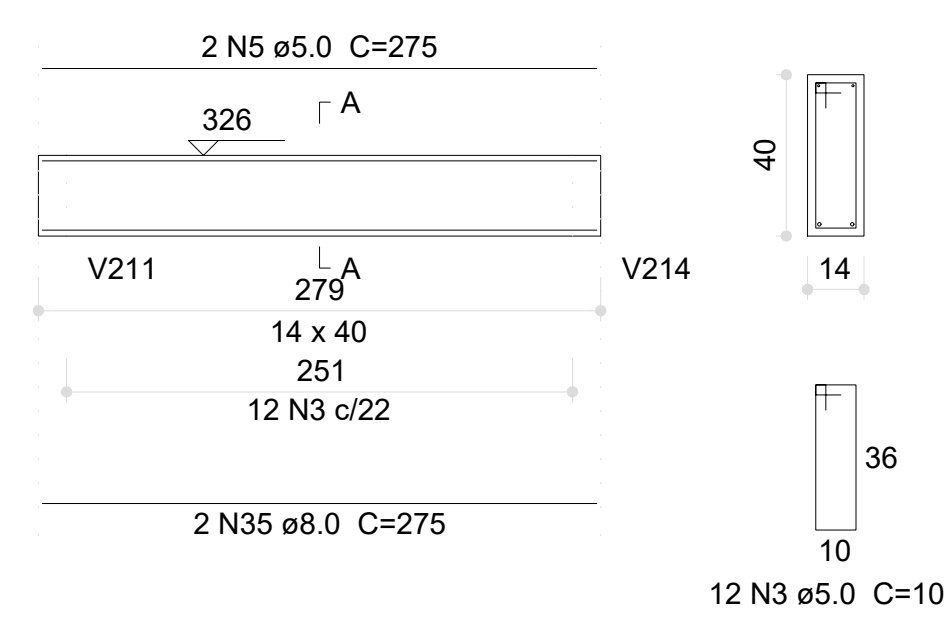
V158 (14 x 40)



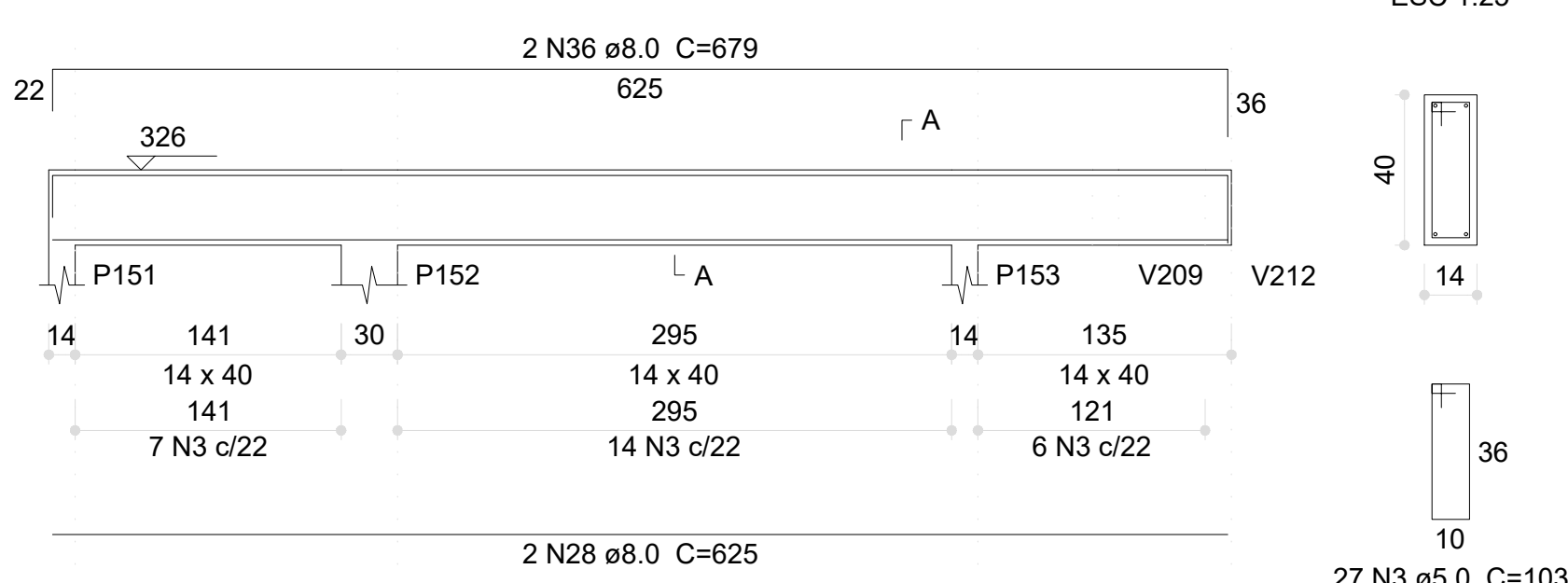
V159 (14 x 40)



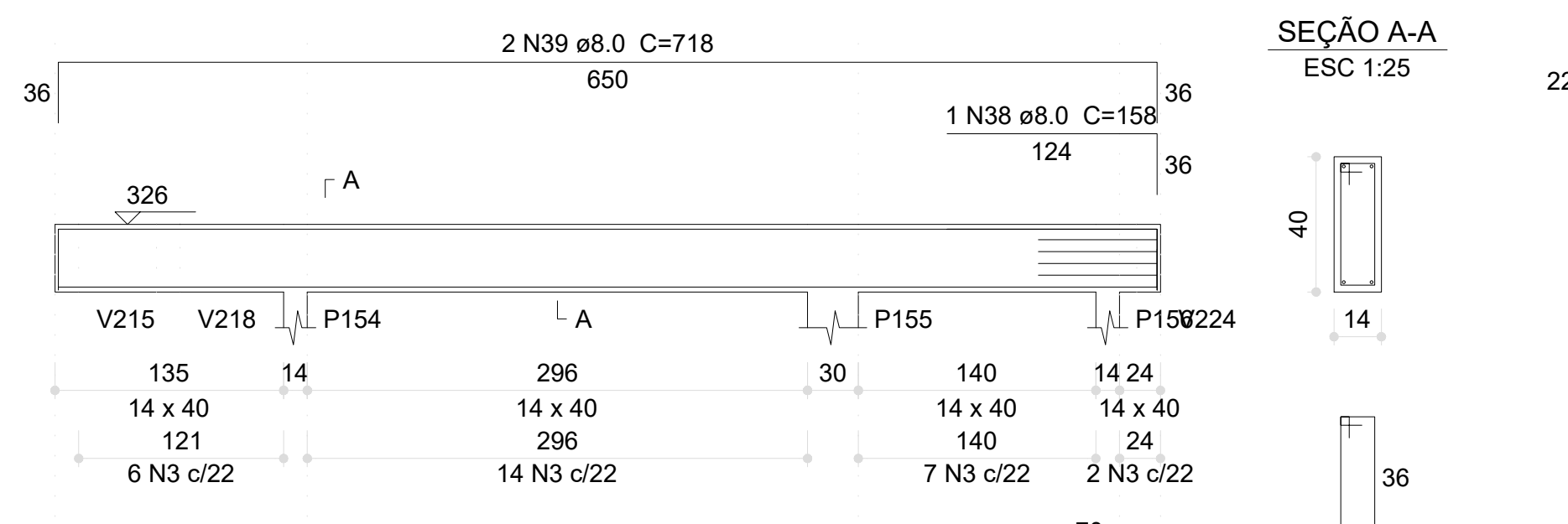
V166 (14 x 40)



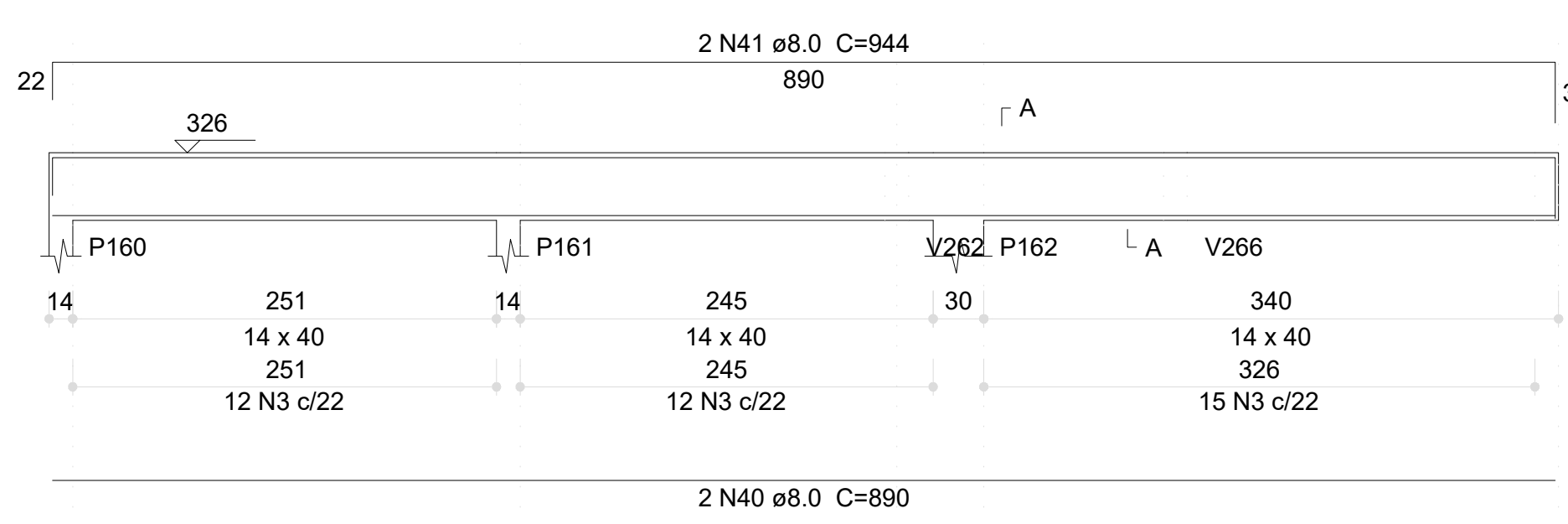
V160 (14 x 40)



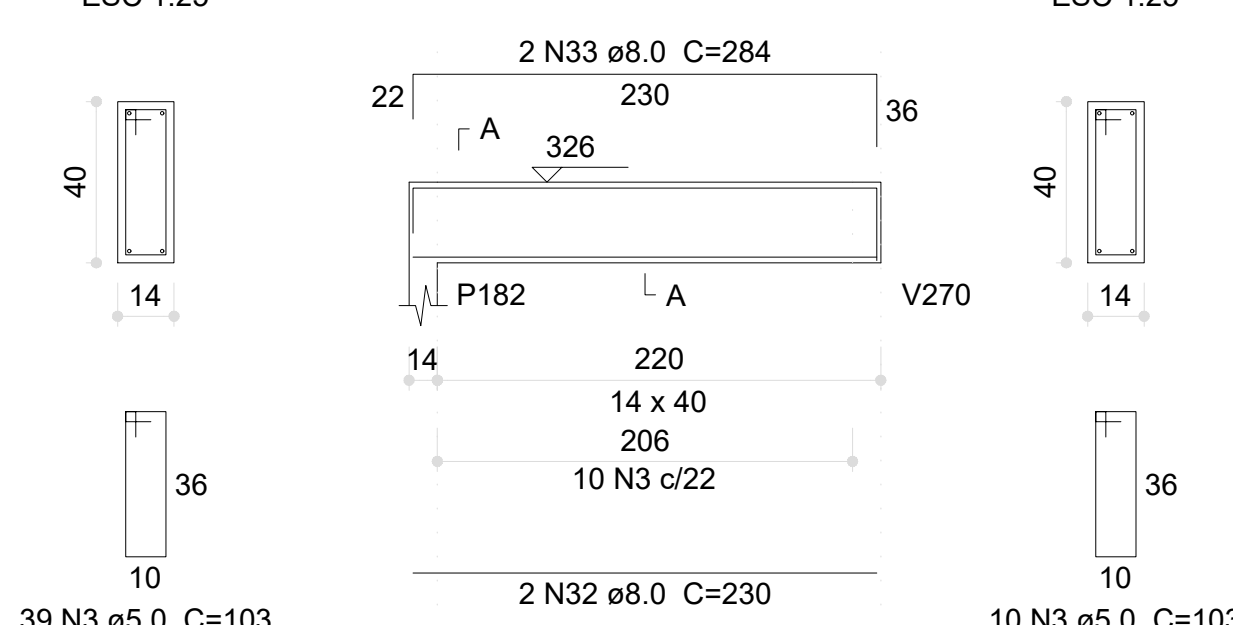
V161 (14 x 40)



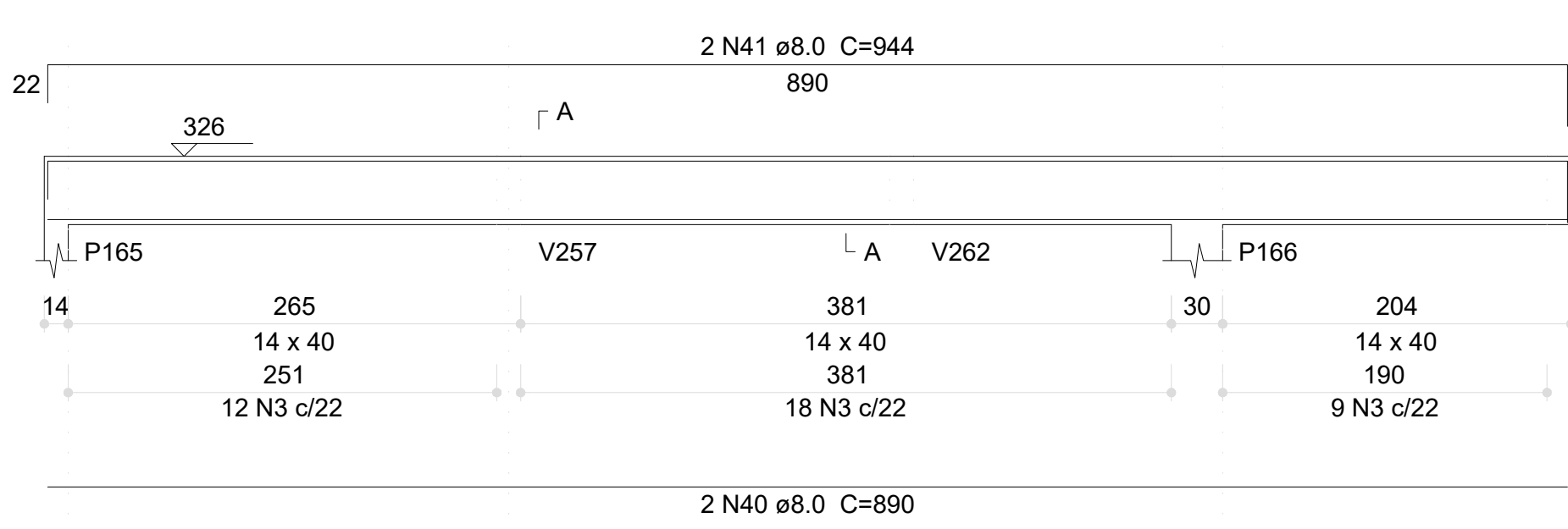
V162 (14 x 40)



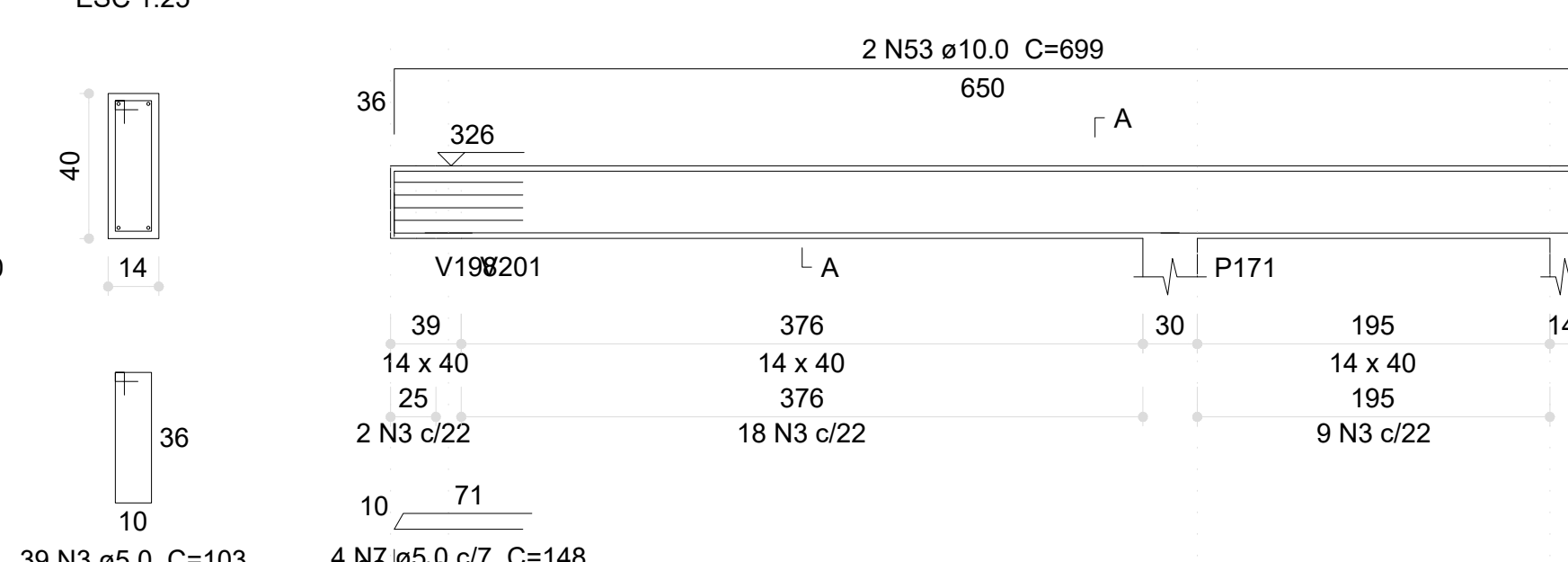
V167 (14 x 40)



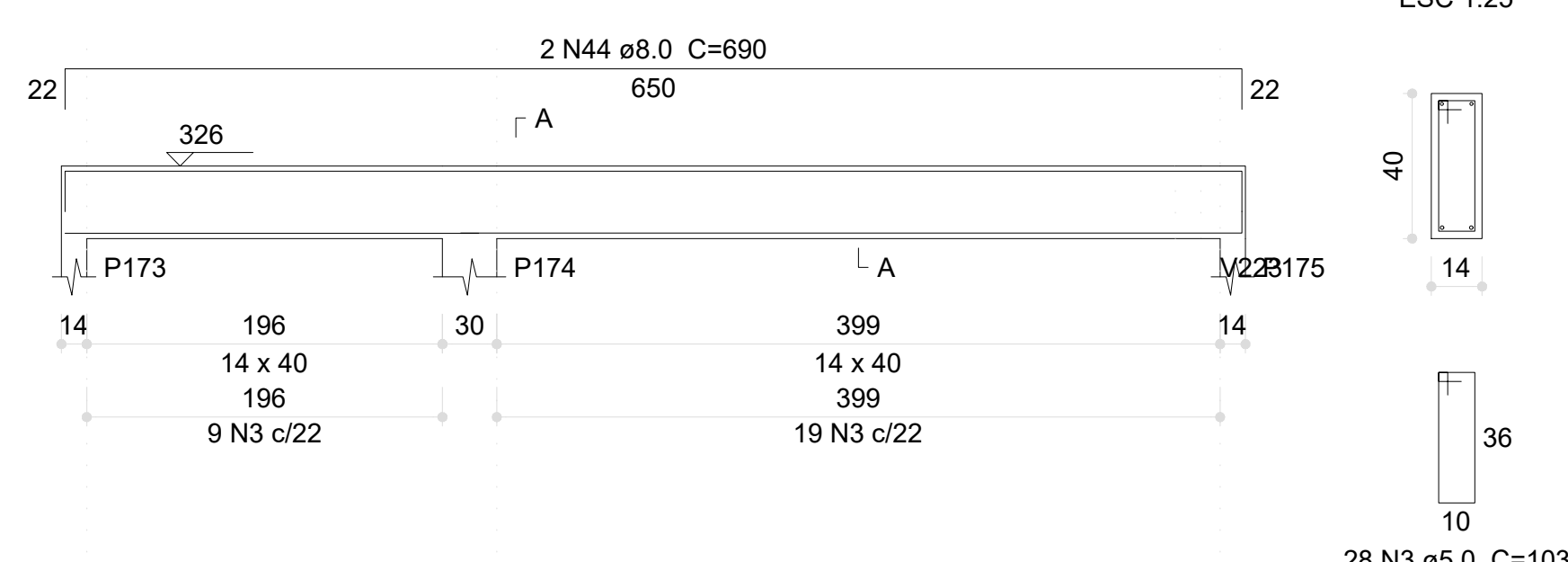
V163 (14 x 40)



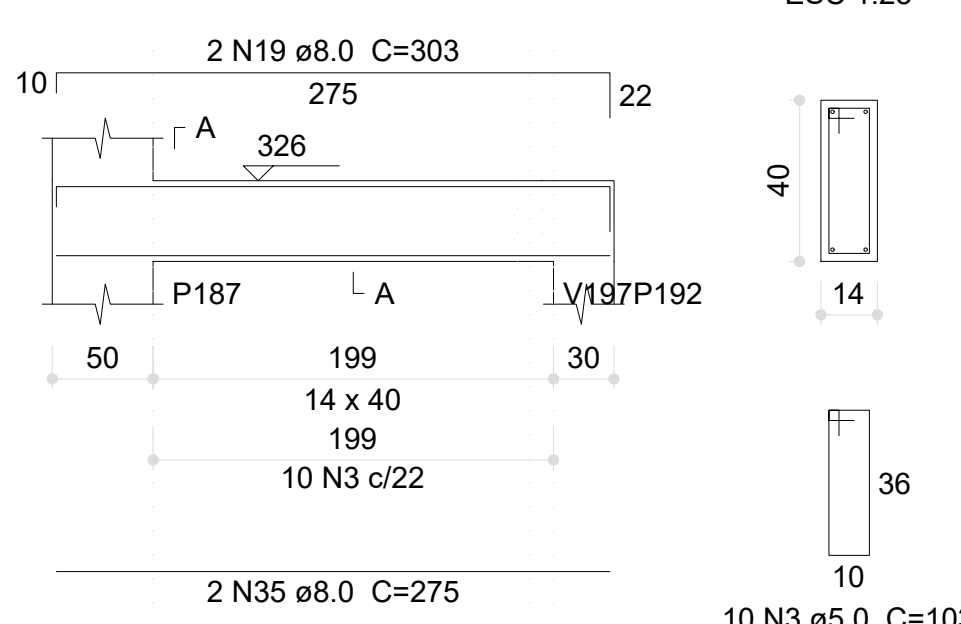
V164 (14 x 40)



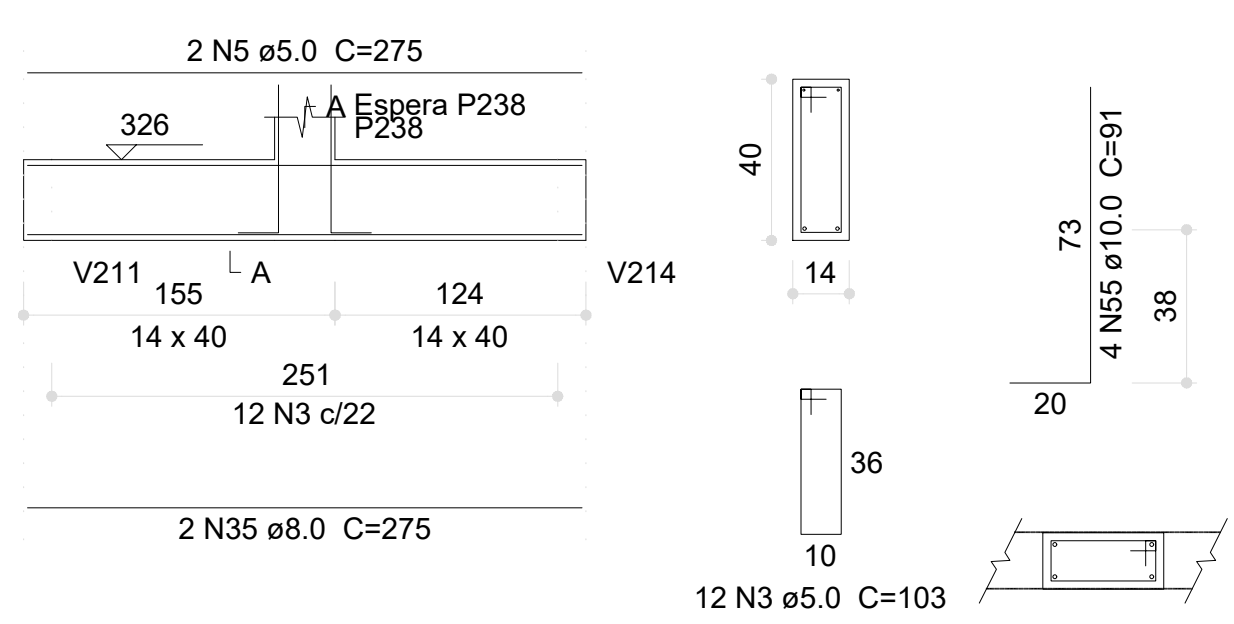
V165 (14 x 40)



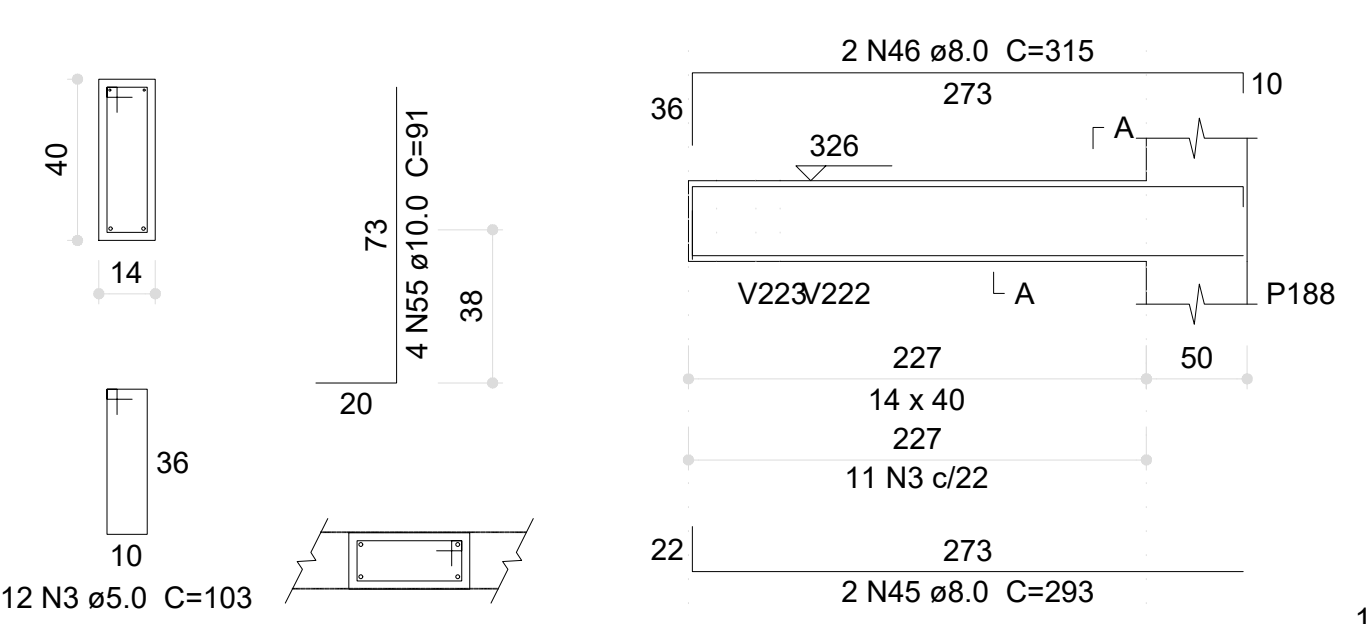
V168 (14 x 40)



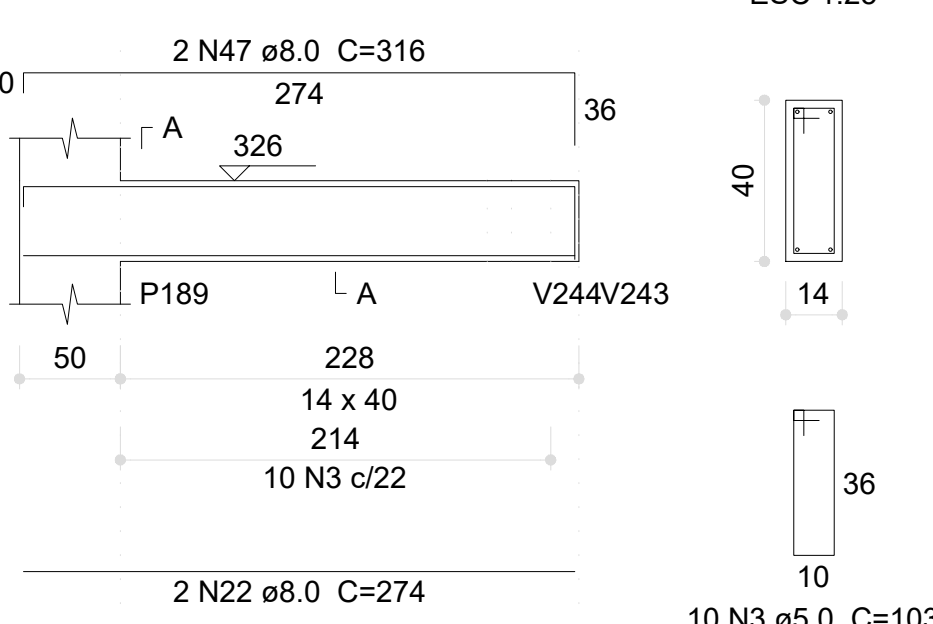
V169 (14 x 40)



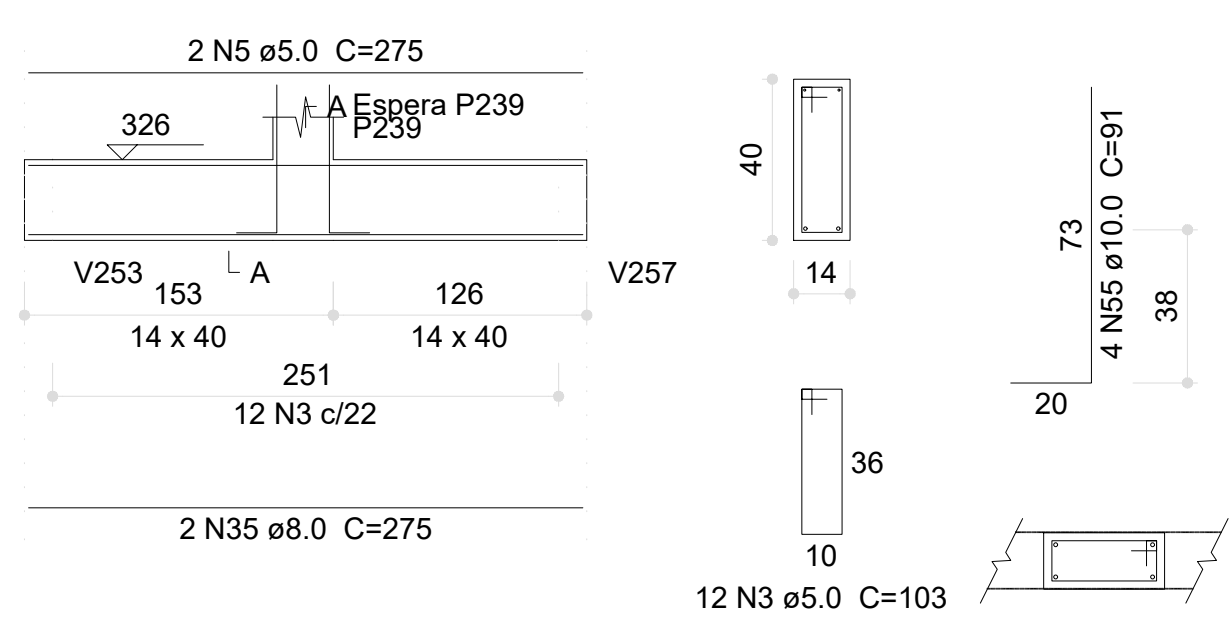
V170 (14 x 40)



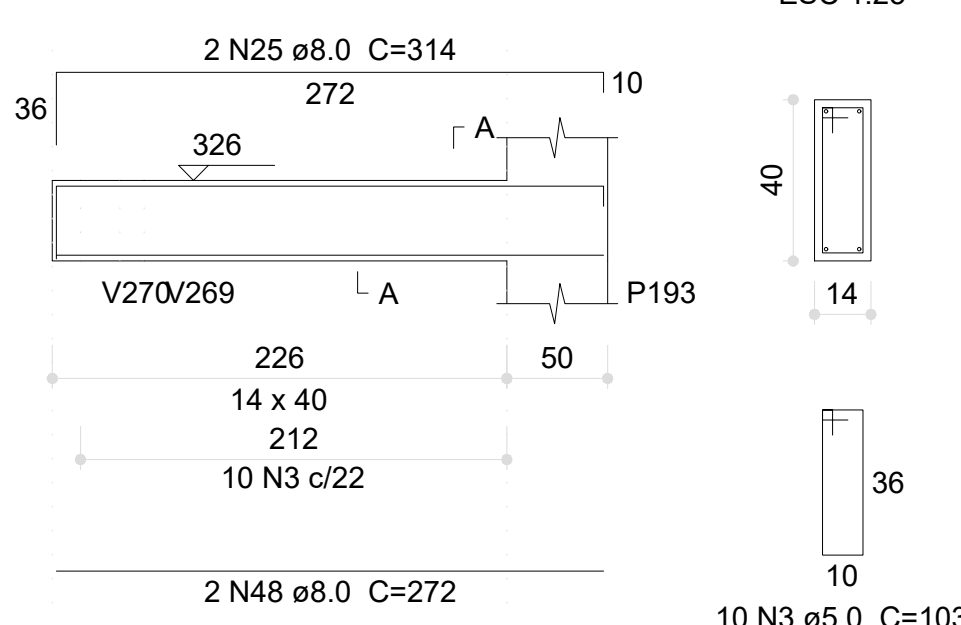
V171 (14 x 40)



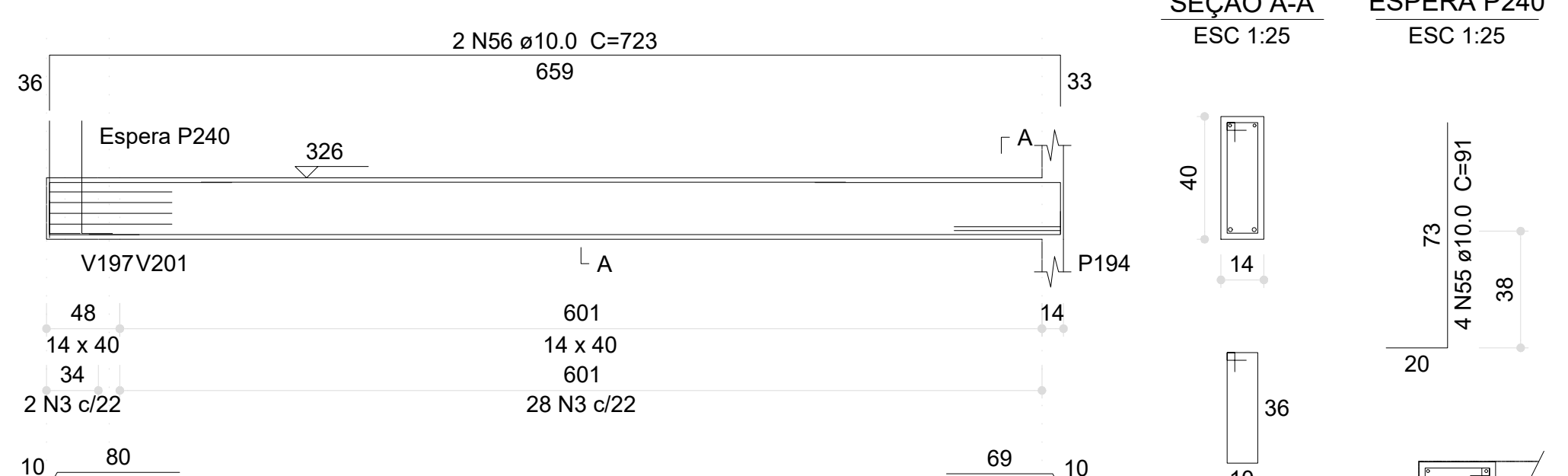
V172 (14 x 40)



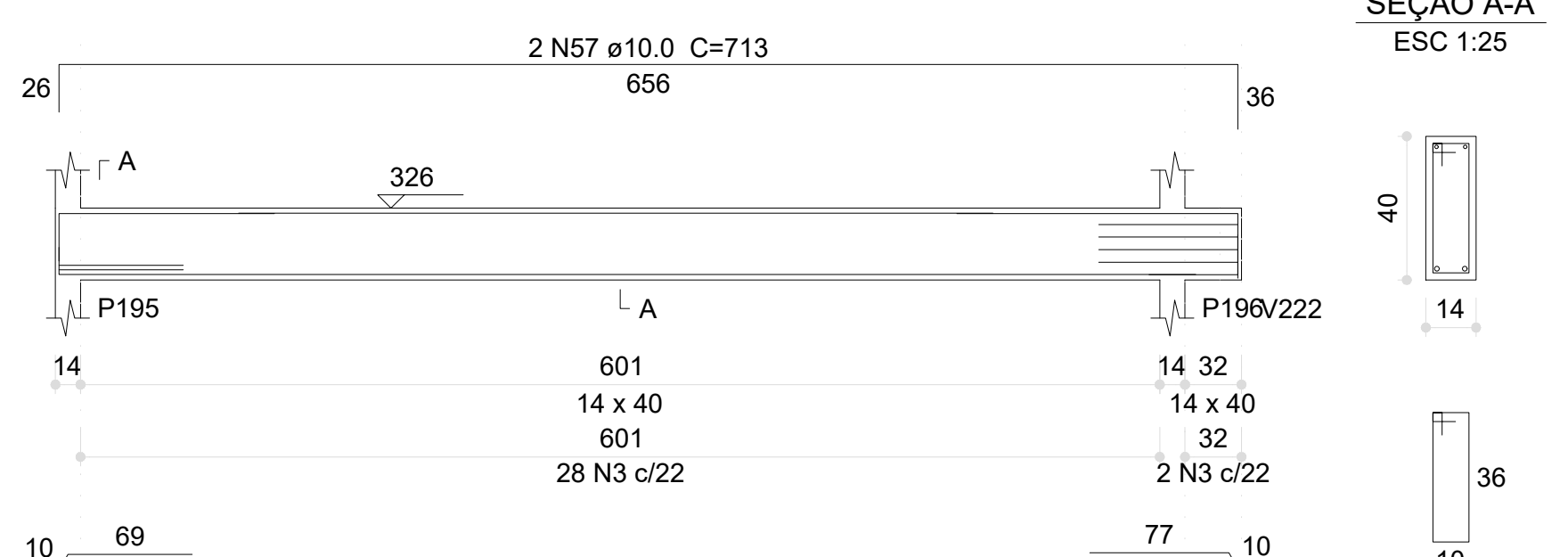
V173 (14 x 40)



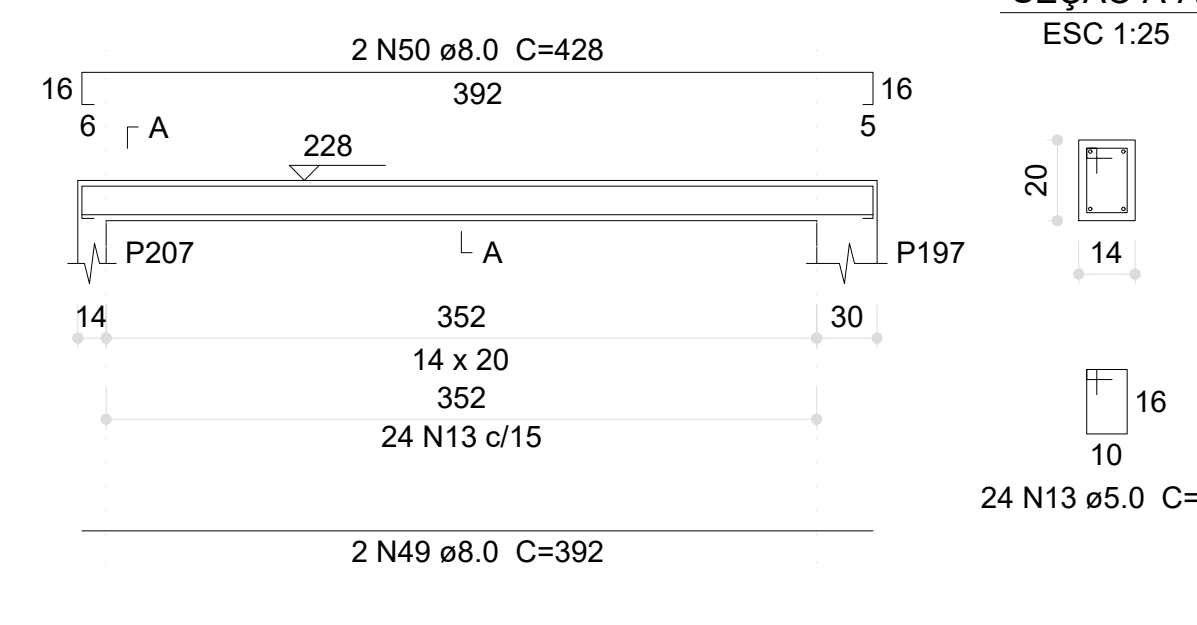
V174 (14 x 40)



V175 (14 x 40)



V186 (14 x 20)



Relação do aço

AÇO	N	DIAM (mm)	QUANT	C.UNIT (cm)	C.TOTAL (cm)
CA60	1	5.0	4	79	316
	2	5.0	3	99	297
	3	5.0	437	103	45011
	4	5.0	4	88	352
	5	5.0	6	275	1650
	6	5.0	4	146	584
	7	5.0	4	148	592
	8	5.0	2	83	664
	9	5.0	4	166	664
	10	5.0	4	144	576
	11	5.0	4	73	292
	12	5.0	4	160	640
	13	5.0	24	63	1512
CA50	14	8.0	2	108	216
	15	8.0	2	144	288
	16	8.0	2	76	152
	17	8.0	2	127	254
	18	8.0	2	263	566
	19	8.0	4	303	1212
	20	8.0	2	281	562
	21	8.0	2	301	602
	22	8.0	4	274	1096
	23	8.0	2	302	604
	24	8.0	2	292	584
	25	8.0	4	314	1256
	26	8.0	2	295	590
	27	8.0	2	329	658
	28	8.0	4	625	2500
	29	8.0	2	665	1330
	30	8.0	4	90	360
	31	8.0	4	124	496
	32	8.0	4	230	920
	33	8.0	4	264	1136
	34	8.0	2	55	110
	35	8.0	8	275	2200
	36	8.0	2	679	1358
	37	8.0	2	670	1340
	38	8.0	1	158	158
	39	8.0	2	718	1436
	40	8.0	4	890	3560
	41	8.0	4	944	3776
	42	8.0	2	63	126
	43	8.0	2	227	454
	44	8.0	2	690	1380
	45	8.0	2	293	586
	46	8.0	2	315	630
	47	8.0	2	316	632
	48	8.0	2	544	1088
	49	8.0	2	392	784
	50	8.0	2	428	856
	51	10.0	2	92	184
	52	10.0	2	416	832
	53	10.0	2	699	1398
	54	10.0	2	660	1320
	55	10.0	12	91	1092
	56	10.0	2	723	1446
	57	10.0	2	713	1426
	58	12.5	2	690	1380
	59	12.5	2	687	1374

Resumo do aço

AÇO	DIAM (mm)	C.TOTAL (m)	PESO (kg)
CA50	8.0	353.2	139.3
	10.0	77	47.5
	12.5	27.6	26.5
CA60	5.0	531.5	81.9
PESO TOTAL (kg)			
CA50	213.3		
CA60	81.9		

Volume de concreto (C-30) = 5.32 m³
Área de forma = 71.37 m²

03	JANEIRO/2023	Revisão geral da disciplina conforme a atualização da arquitetura. Atualização a NBR 6150/2014 e NBR 6122/2019.
02	JANEIRO/2017	Atualização a NBR 6150/2015. Alteração: quadro de áreas, fechamento frontal, sanitários 1 e 2, altura da plataforma, mobiliário e equipamento, altura da cerâmica nos sanitários, cor das portas dos sanitários e altura da porta P44. Alteração: gradil e quadro de cargas no canteiro d'água, de dutos hidráulicos e esgoto no pré-escola.
01	JULHO/2016	Alteração paredes - shaft para tubulação hidráulica e detalhamento; alteração da altura da plataforma.
Nº	DATA	DESCRIÇÃO
CONTROLE DE REVISÕES		

PROJETO PADRÃO - FNDE

PROPRIETÁRIO:	
ENDEREÇO:	
MUNICÍPIO - UF:	
PROPRIETÁRIO:	
RESP. TÉCNICO:	CAU / CREA
AUTOR DO PROJETO:	CAU / CREA
APROVAÇÕES	CAU / CREA
	PREFEITURA / RA
OBSERVAÇÕES:	
CRECHE PRÉ-ESCOLA TIPO 1	
PROJETO DE ESTRUTURA DE CONCRETO	
COORDENAÇÃO	DETALHAMENTO ARMAÇÃO DAS VIGAS
CGEST - Coordenação Geral de Infraestrutura Educacional	PAVIMENTO TÉRREO
	PARTES 03
REVISÃO	ESCALA
R.00 R.03	1:25; 1:50
R.01 R.02	DATA EMISSÃO
	JAN/2023
FORMATO (1189x841)	
	PRANCHAS
	21/30