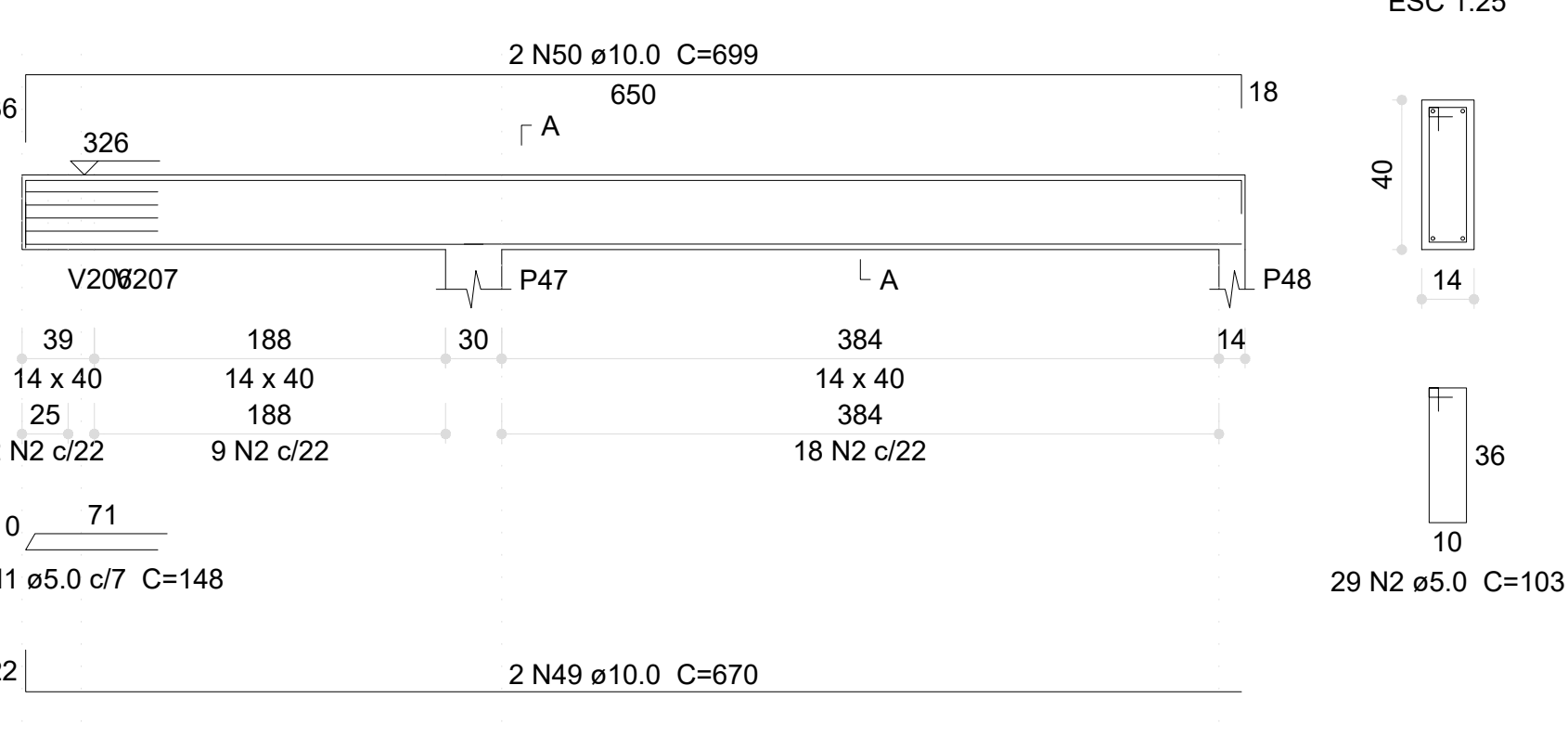
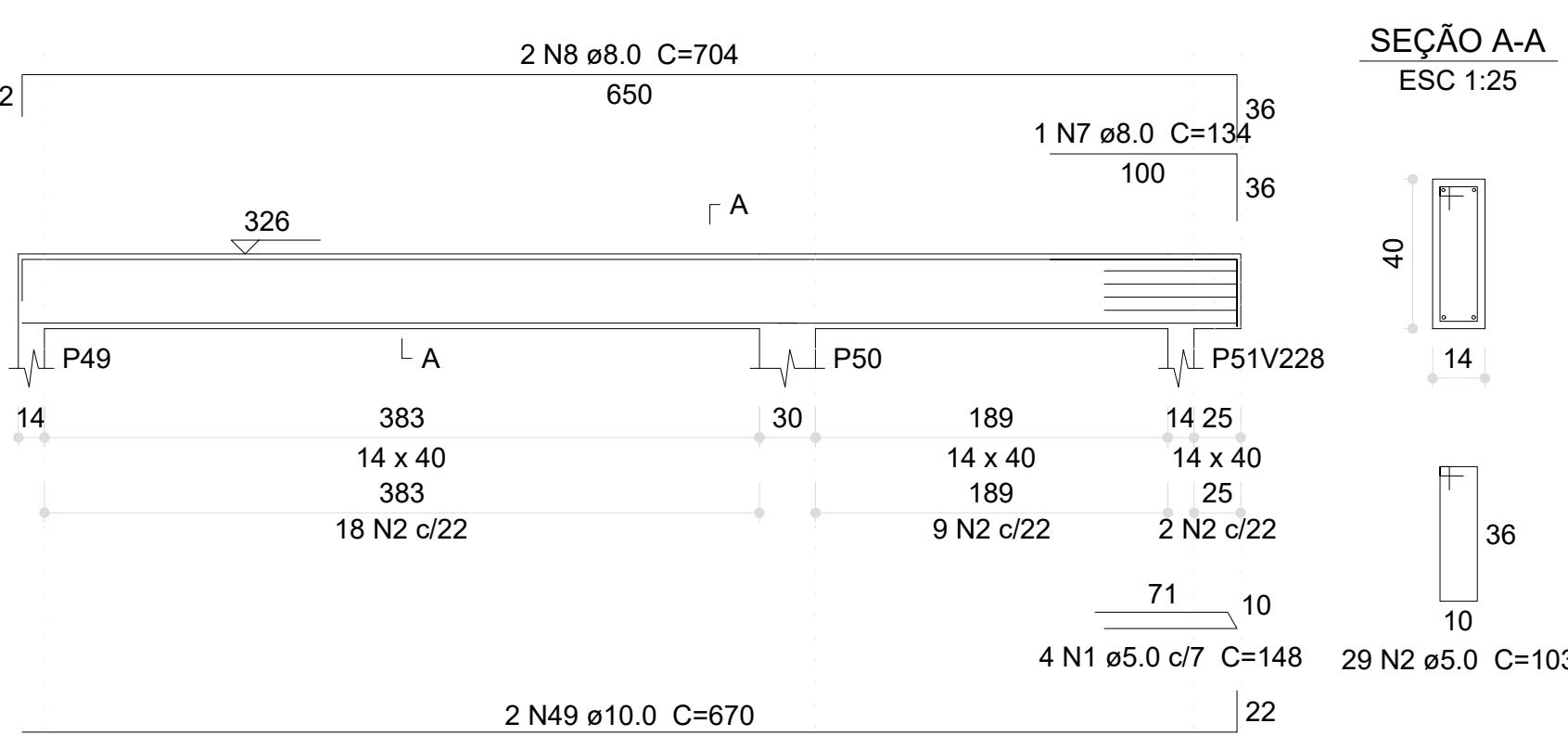


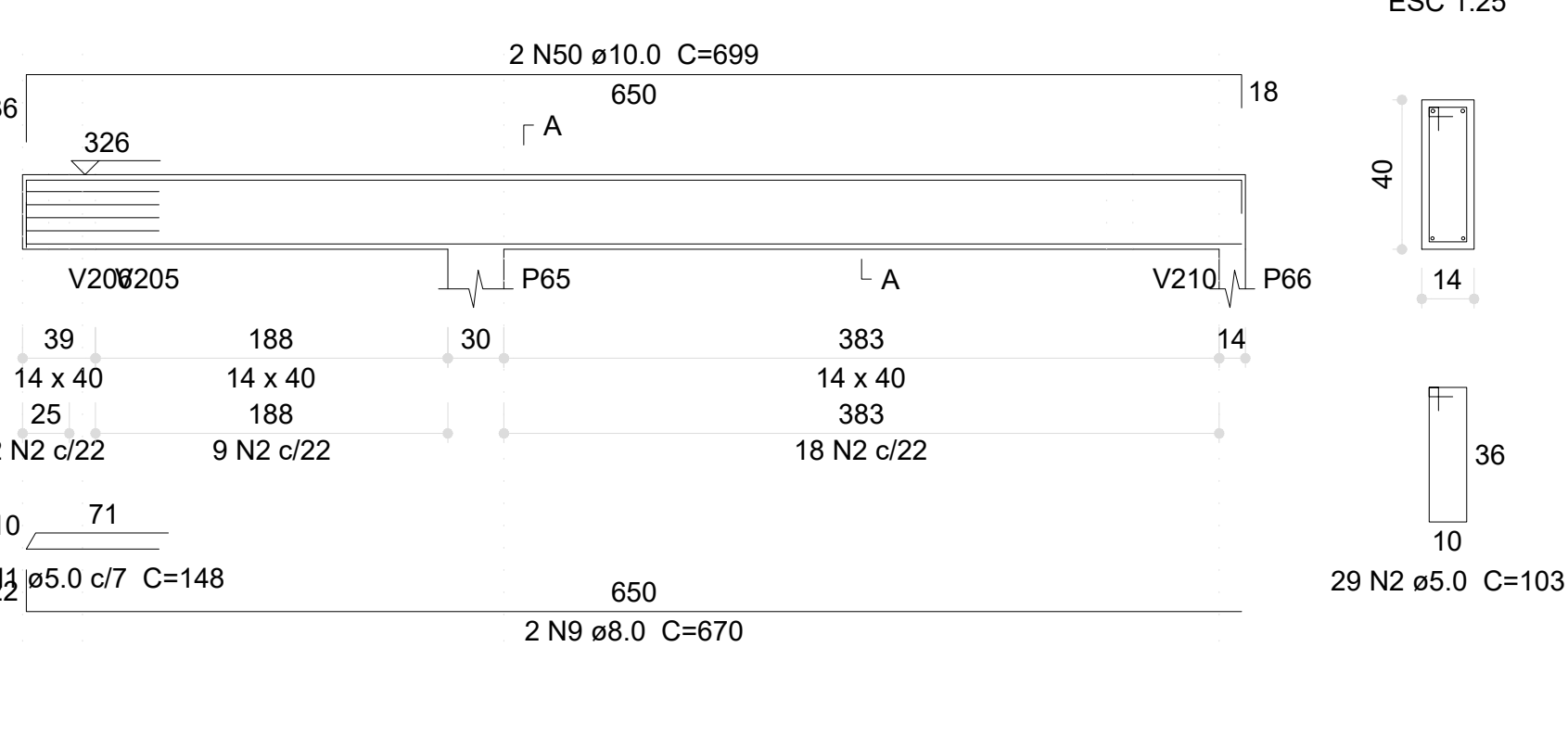
V119 (14 x 40)



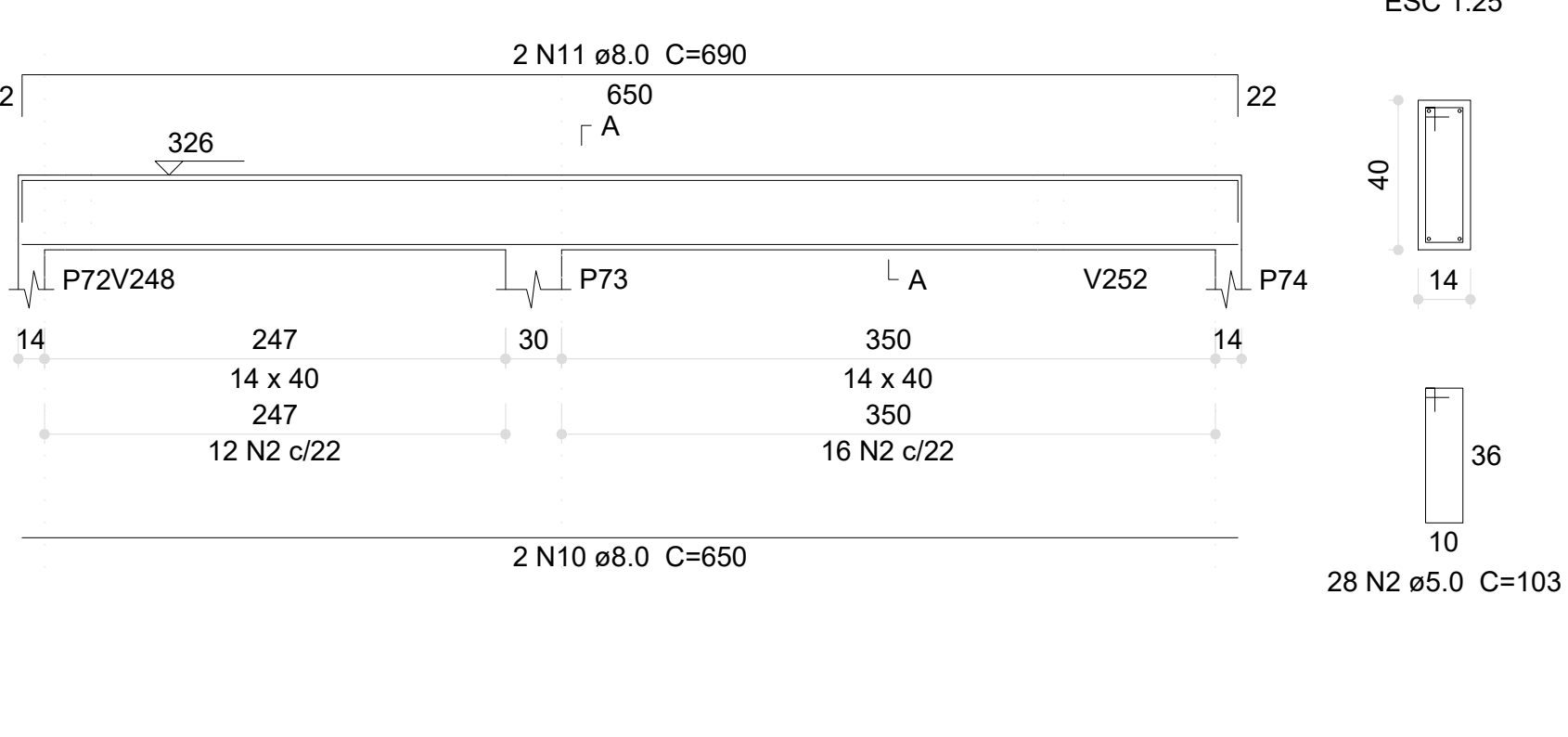
V120 (14 x 40)



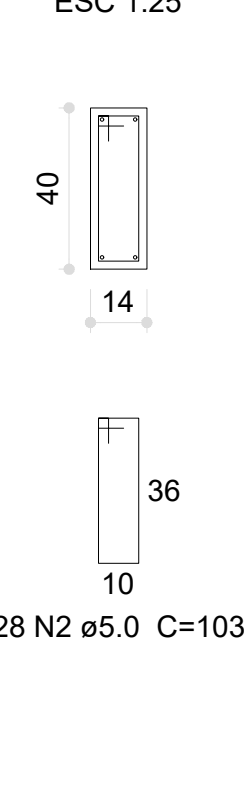
V123 (14 x 40)



V125 (14 x 40)



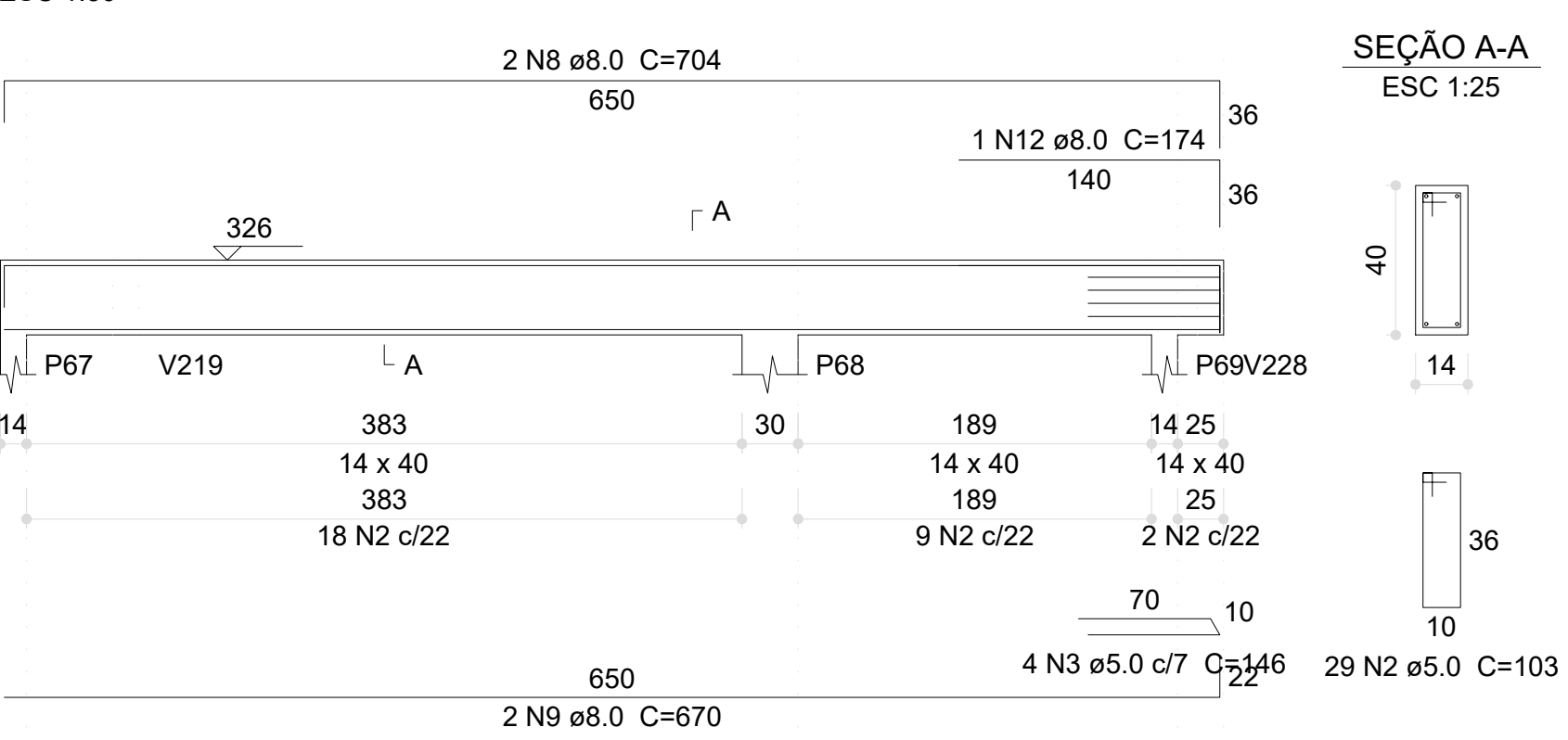
SEÇÃO A-A



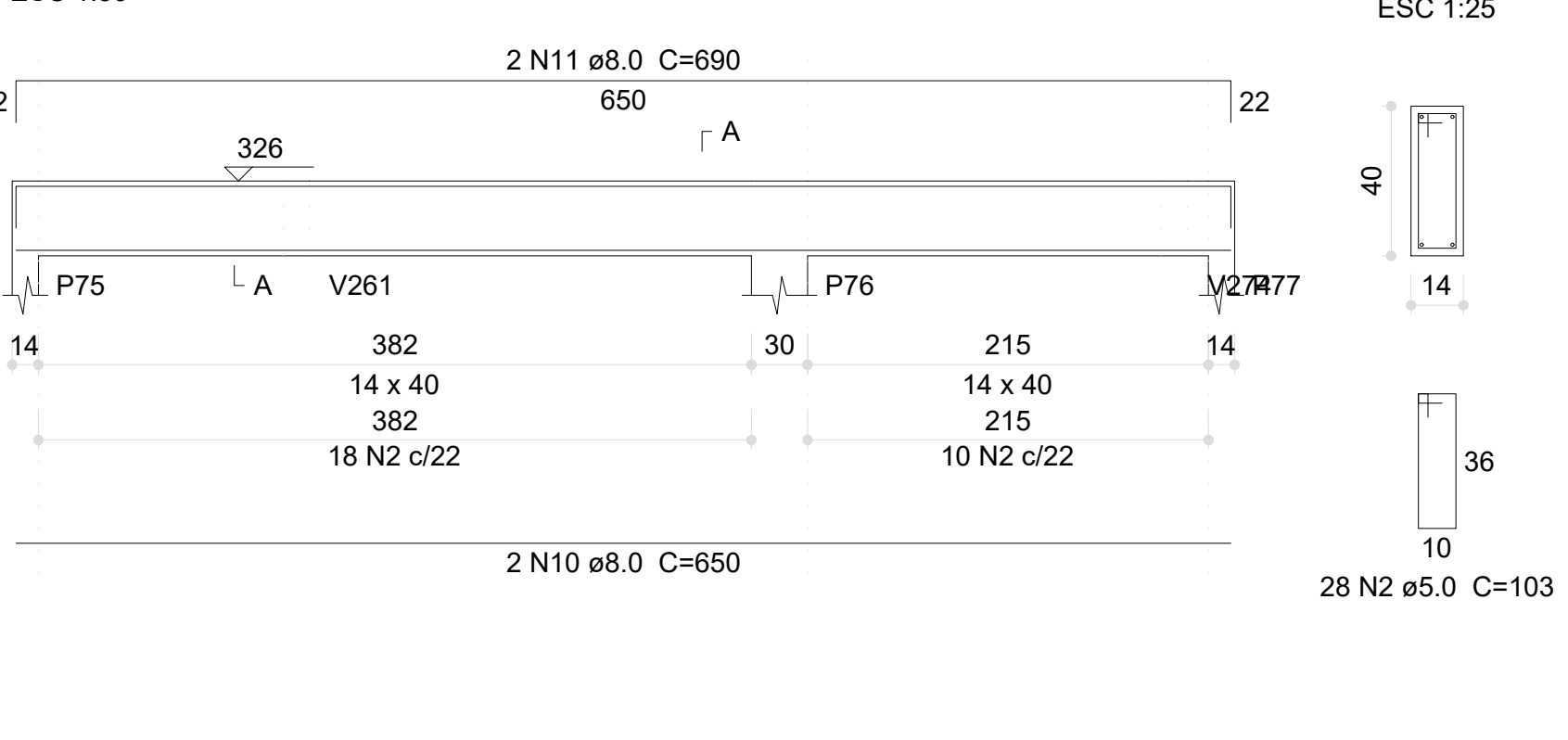
Relação do aço

ACO	N	DIAM (mm)	QUANT	C.UNIT (cm)	C.TOTAL (cm)
CA60	1	5.0	12	148	1776
	2	5.0	501	103	51603
	3	5.0	4	146	584
	4	5.0	13	99	1287
	5	5.0	8	79	632
	6	5.0	4	85	340
	7	8.0	1	134	134
	8	8.0	4	704	2816
	9	8.0	4	670	2680
	10	8.0	4	650	2600
CA50	11	8.0	4	690	2760
	12	8.0	1	174	174
	13	8.0	2	572	1144
	14	8.0	6	625	3750
	15	8.0	2	665	1330
	16	8.0	2	274	548
	17	8.0	2	302	604
	18	8.0	2	279	558
	19	8.0	2	299	598
	20	8.0	2	295	590
	21	8.0	2	317	634
	22	8.0	2	292	584
	23	8.0	2	314	628
	24	8.0	2	76	152
	25	8.0	2	127	254
	26	8.0	2	679	1358
	27	8.0	2	669	1338
	28	8.0	2	703	1406
	29	8.0	2	648	1296
	30	8.0	2	688	1376
	31	8.0	2	640	1280
	32	8.0	2	680	1360
	33	8.0	2	213	426
	34	8.0	2	229	458
	35	8.0	2	35	70
	36	8.0	2	86	172
	37	8.0	2	204	408
	38	8.0	2	247	494
	39	8.0	2	626	1252
	40	8.0	2	666	1332
	41	8.0	2	693	1386
	42	8.0	2	667	1334
	43	8.0	2	701	1402
	44	8.0	2	105	210
	45	8.0	2	137	274
	46	8.0	4	36	144
	47	8.0	2	906	1812
	48	8.0	2	934	1868
	49	10.0	4	699	2796
	50	10.0	2	530	1060
	51	10.0	2	8	16
	52	10.0	8	91	728

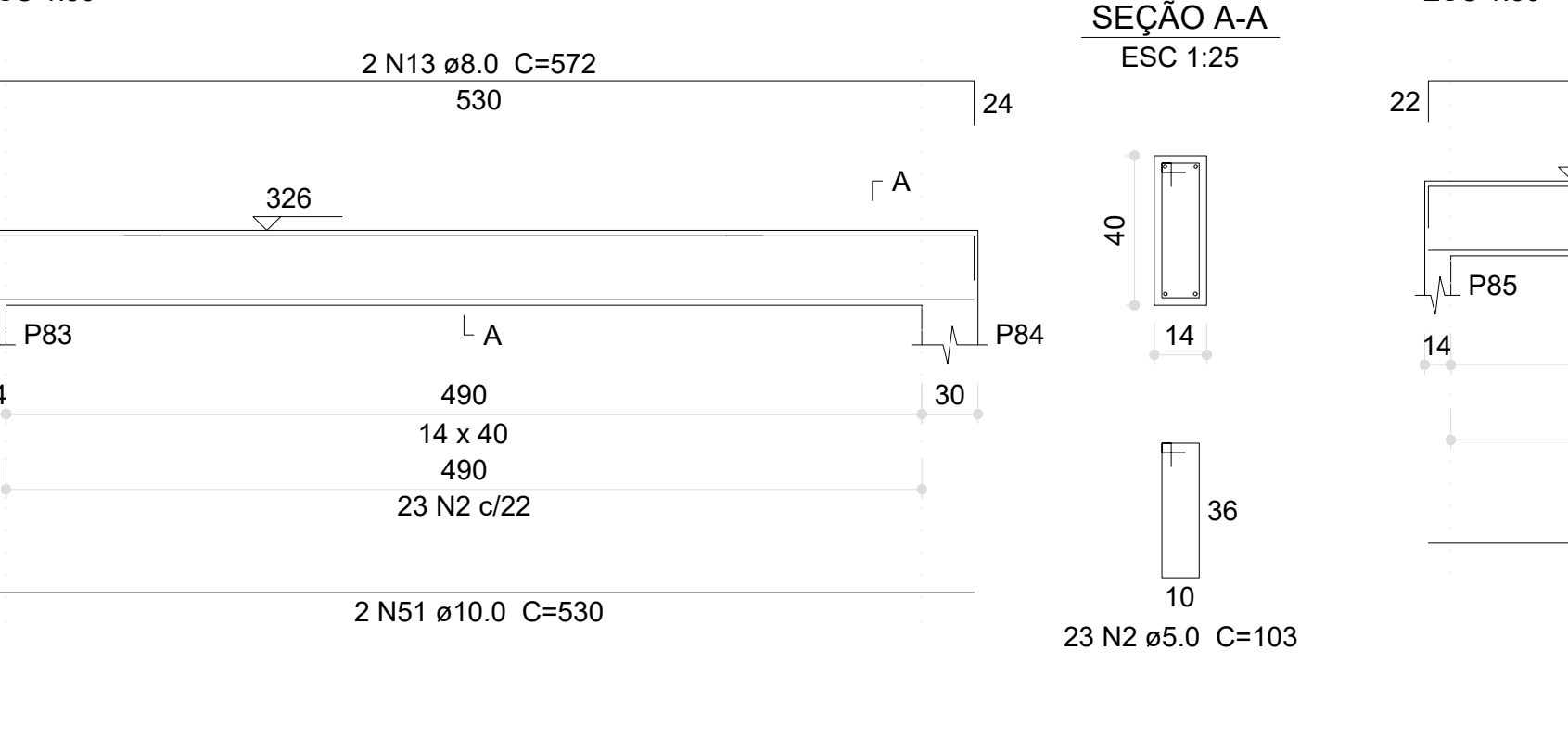
V124 (14 x 40)



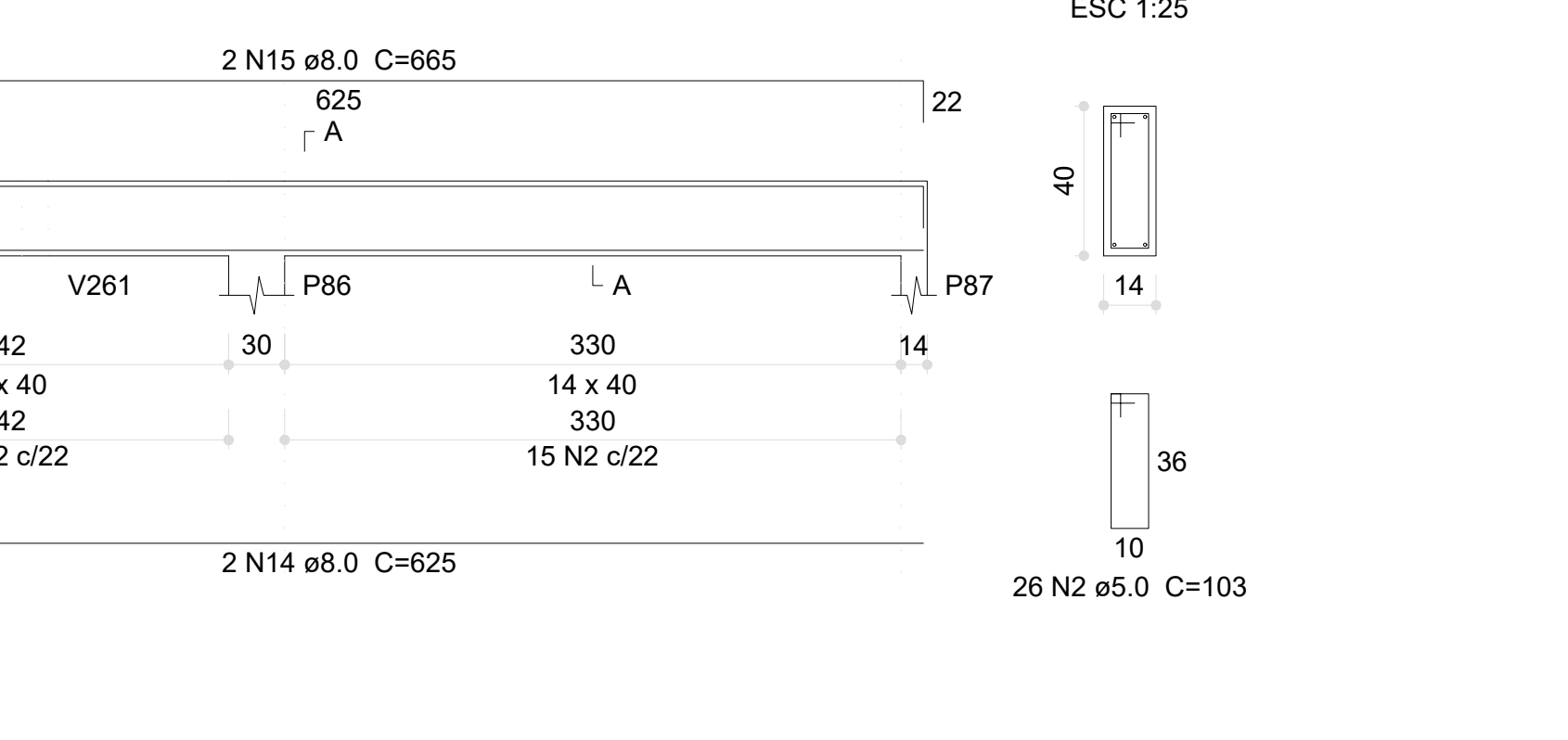
V126 (14 x 40)



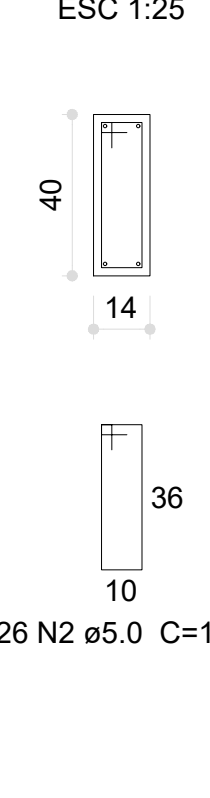
V129 (14 x 40)



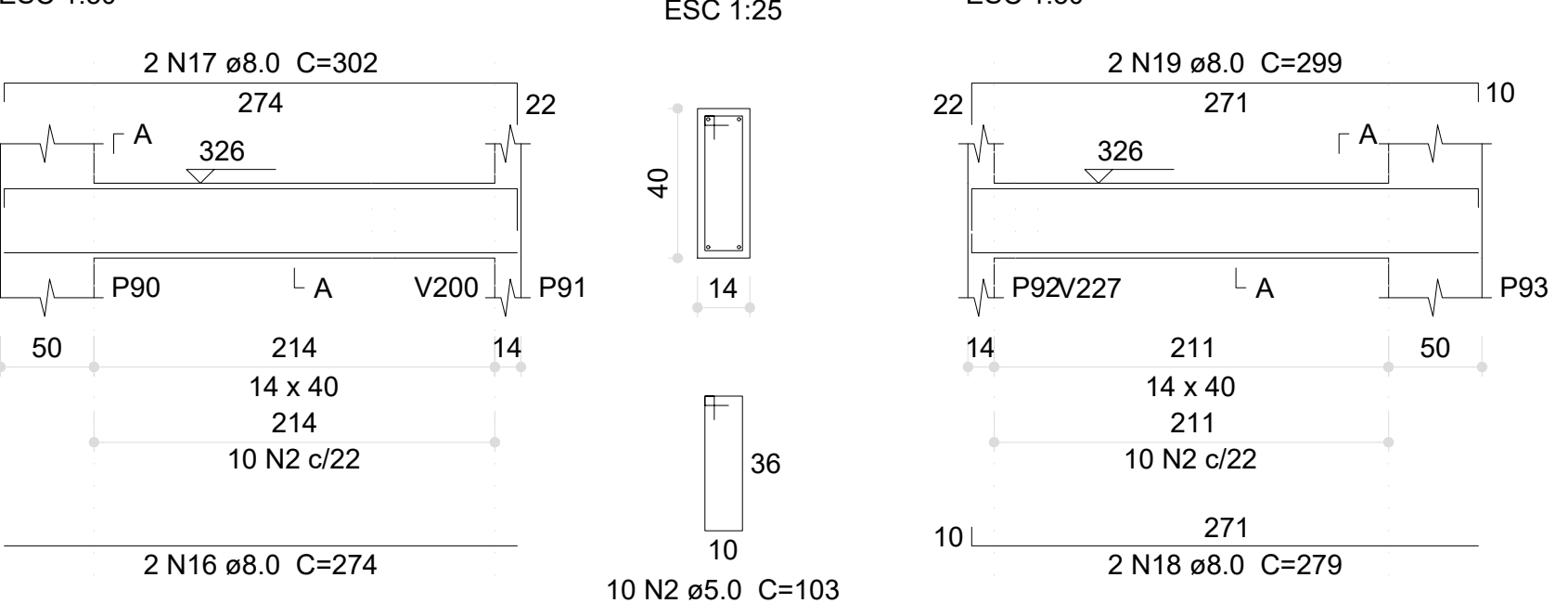
V130 (14 x 40)



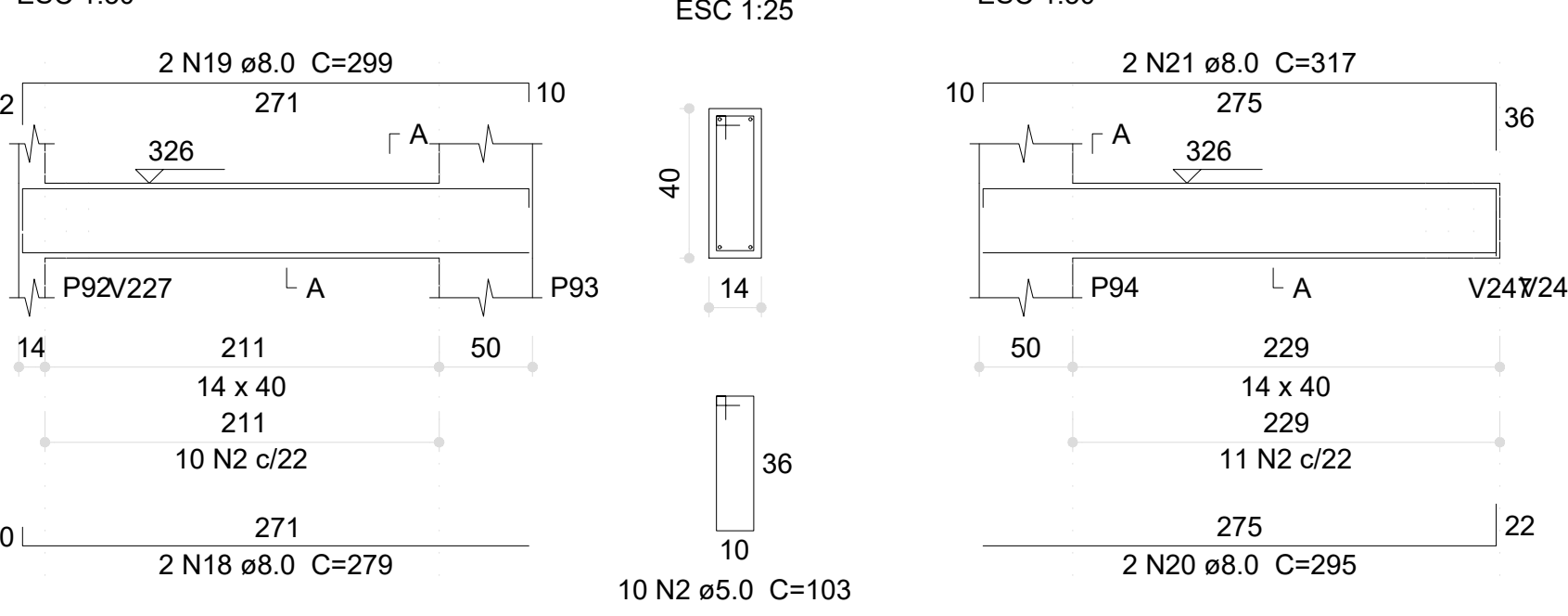
SEÇÃO A-A



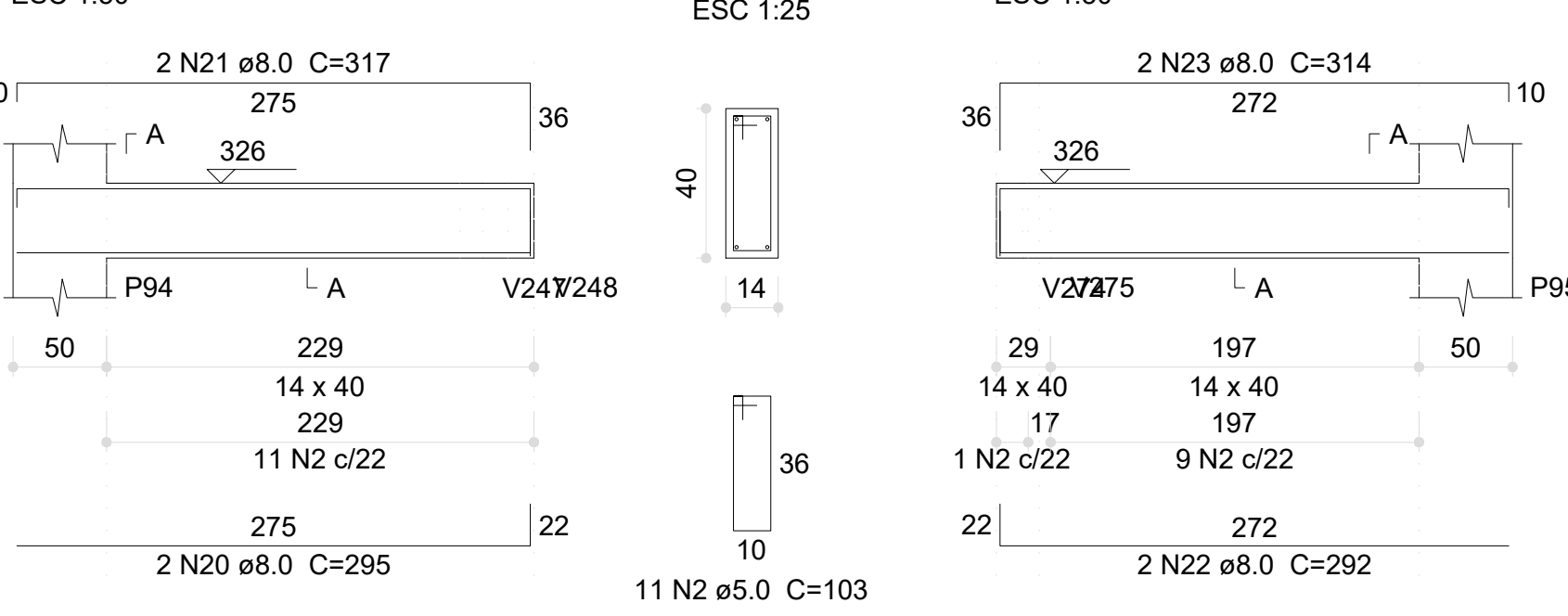
V131 (14 x 40)



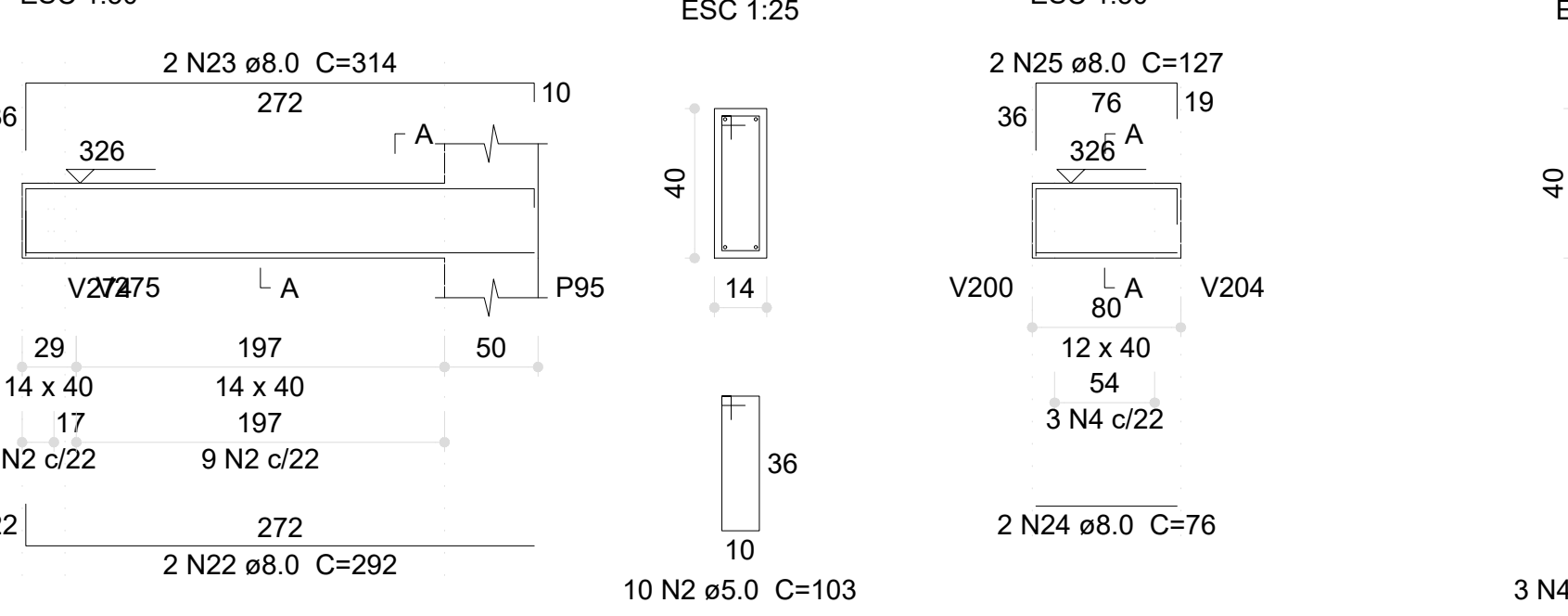
V132 (14 x 40)



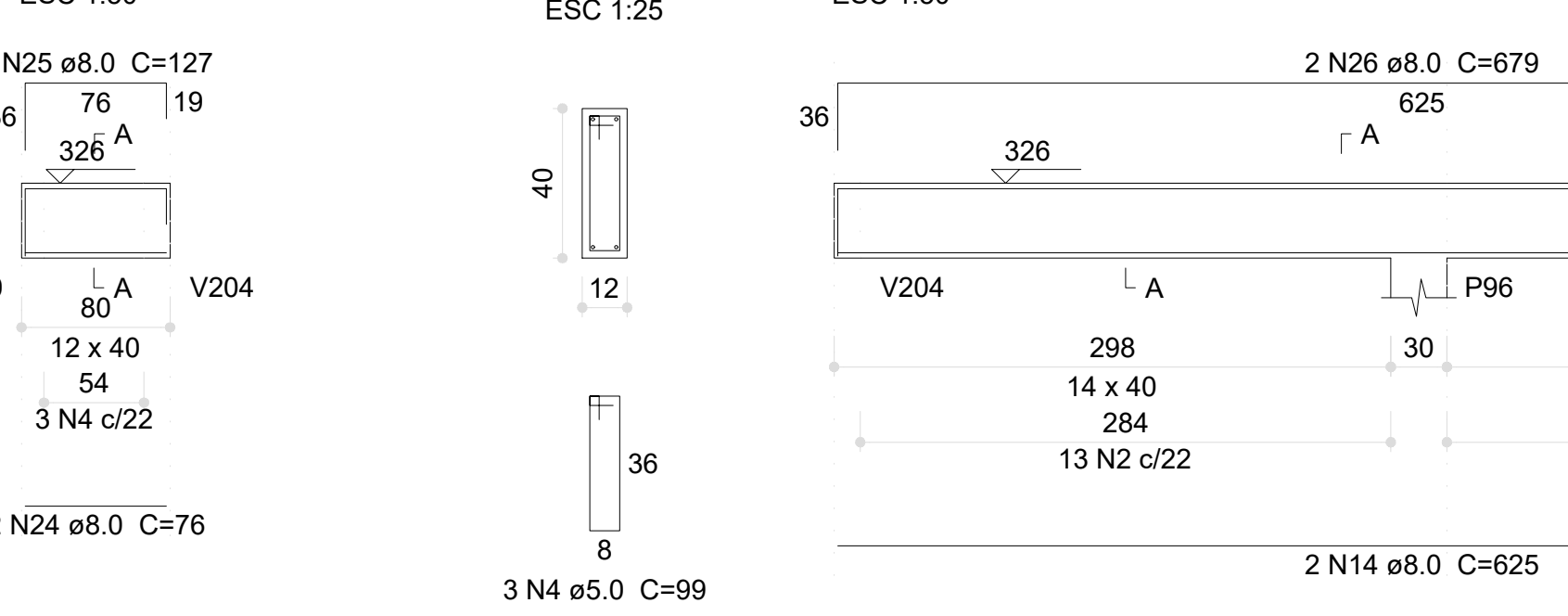
V133 (14 x 40)



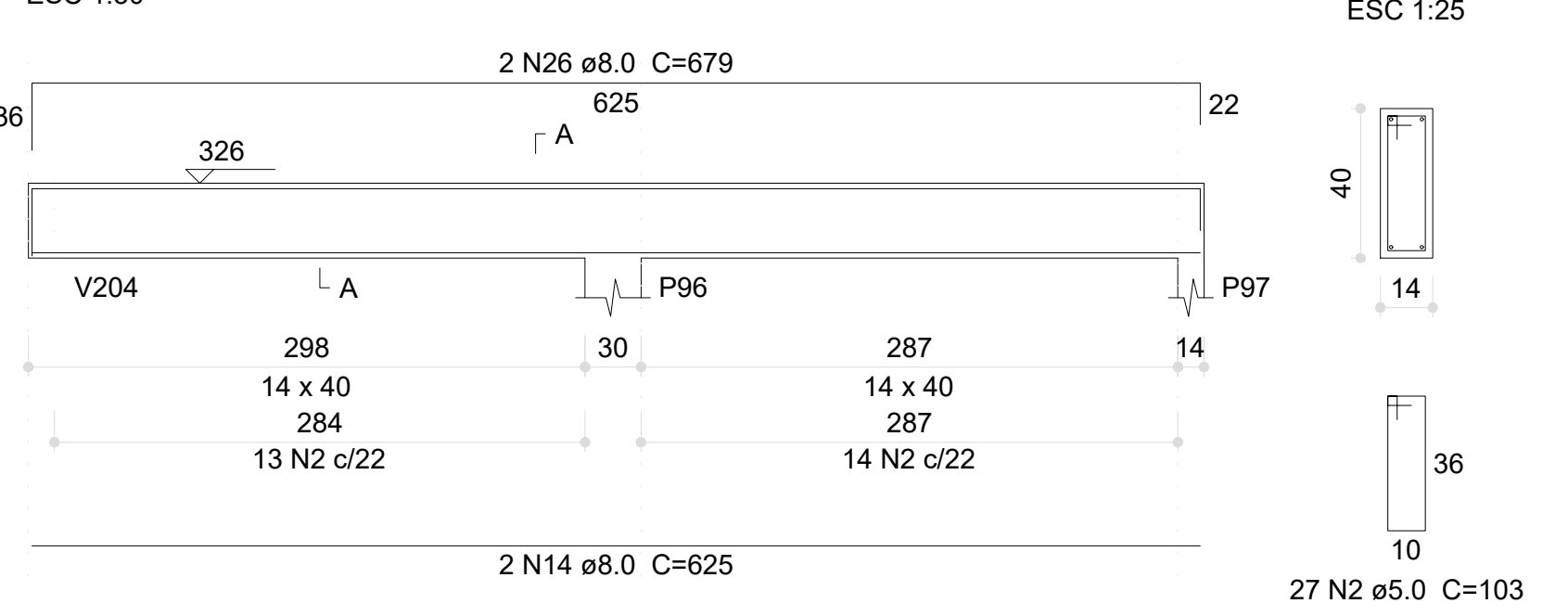
V134 (14 x 40)



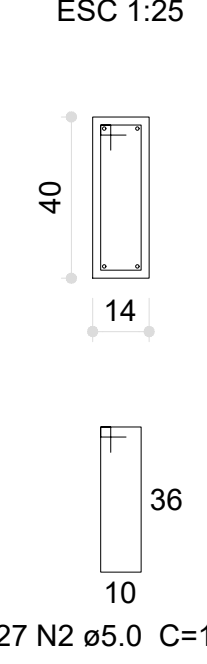
V135 (12 x 40)



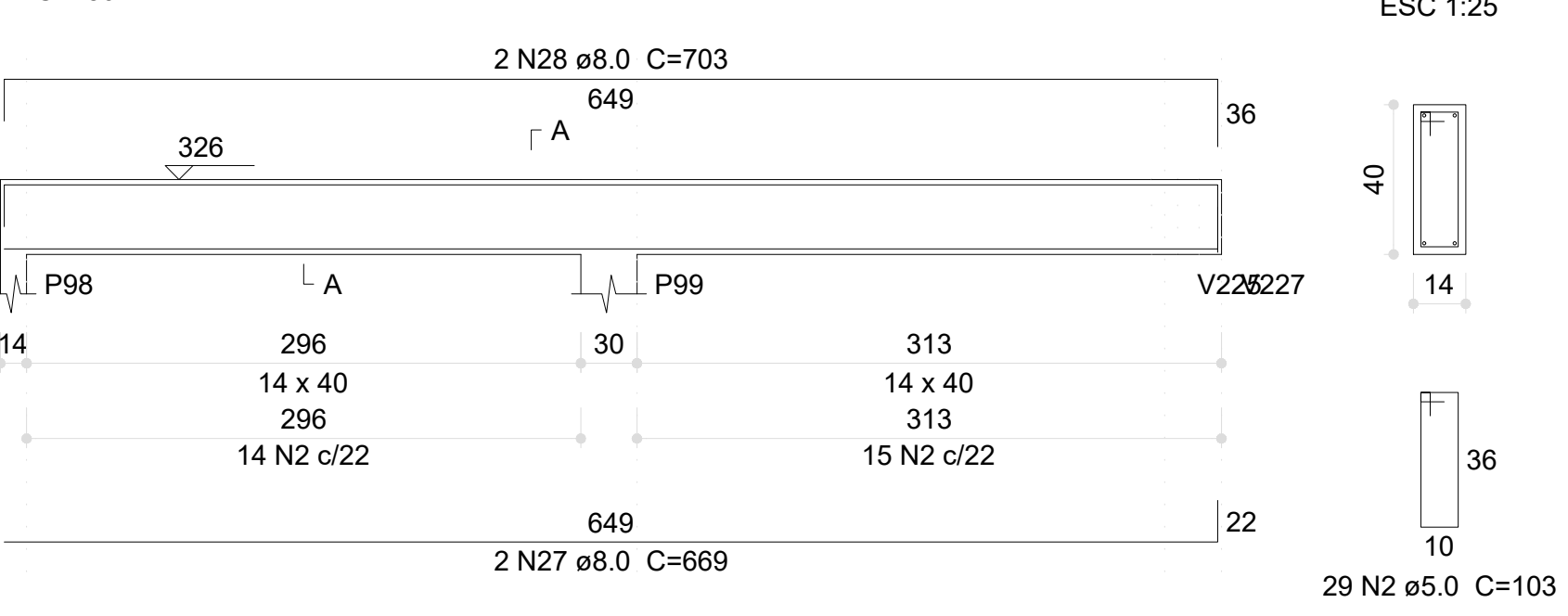
V136 (14 x 40)



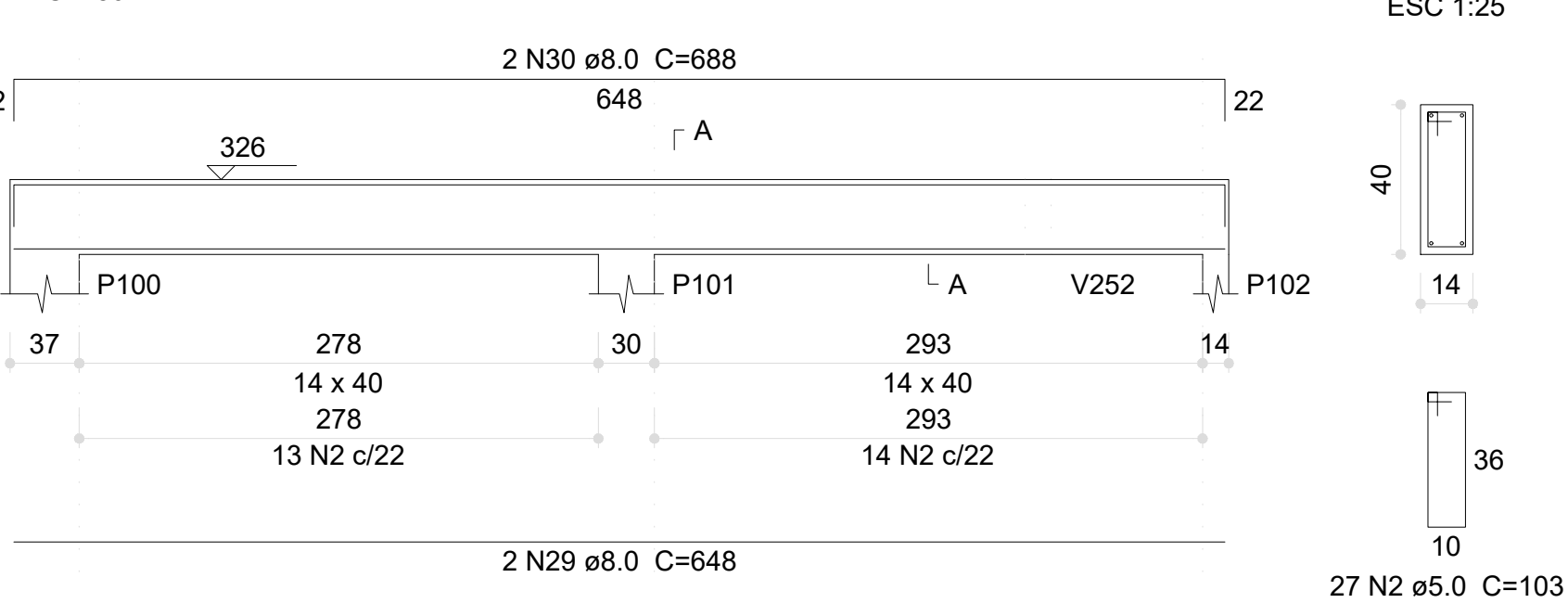
SEÇÃO A-A



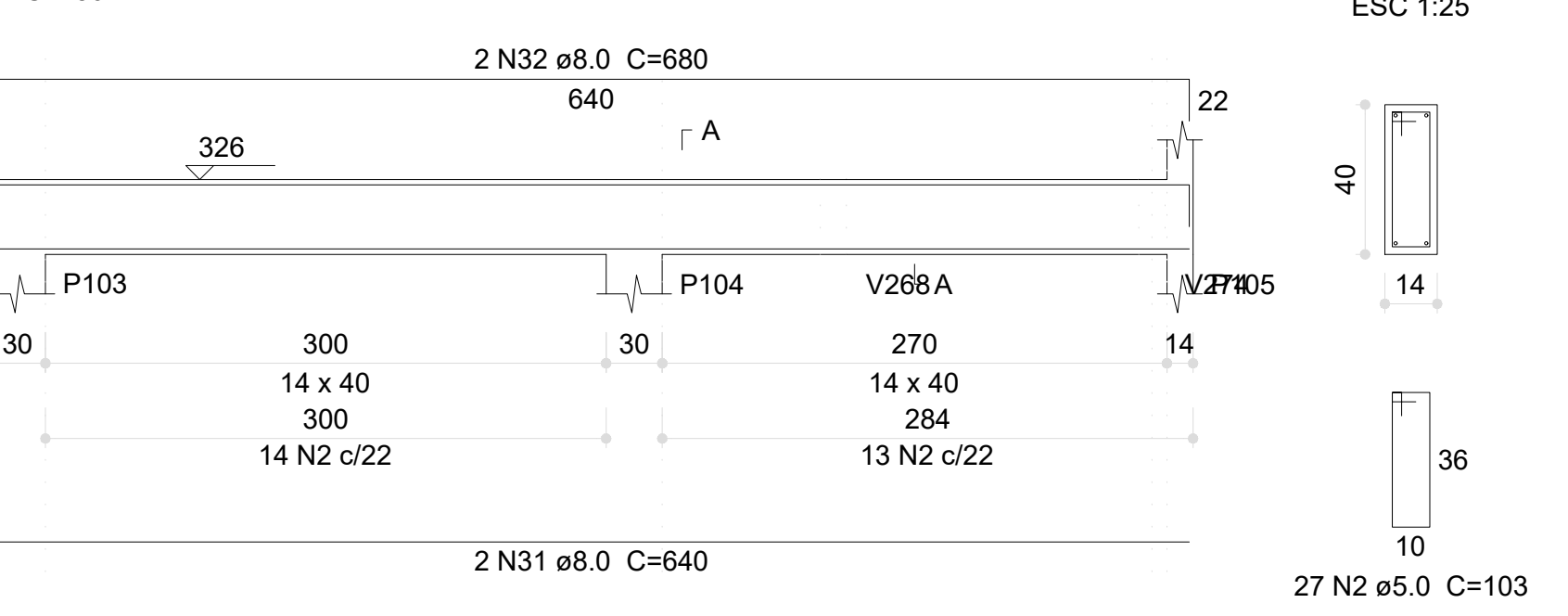
V137 (14 x 40)



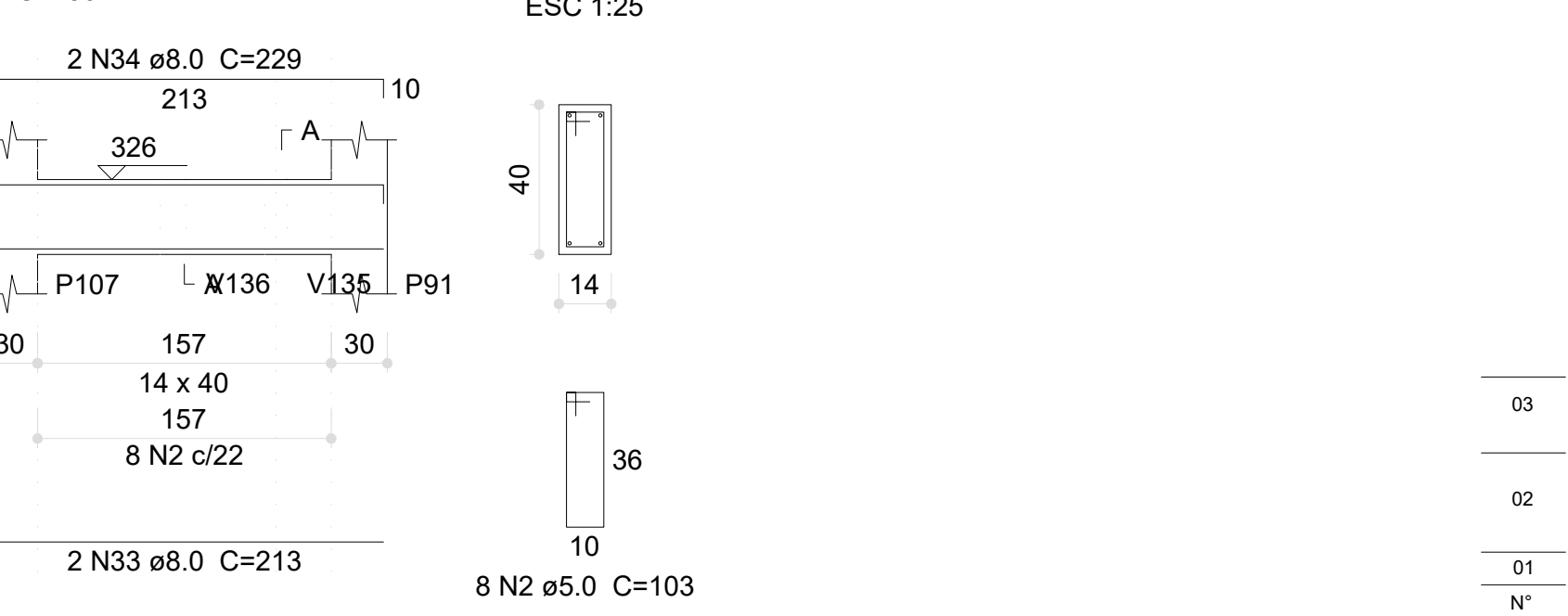
V138 (14 x 40)



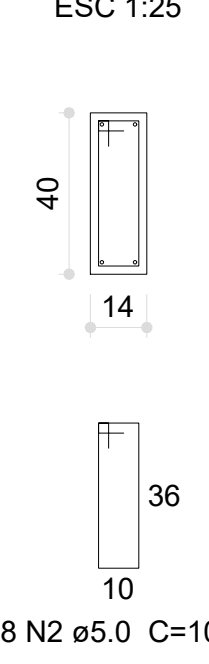
V139 (14 x 40)



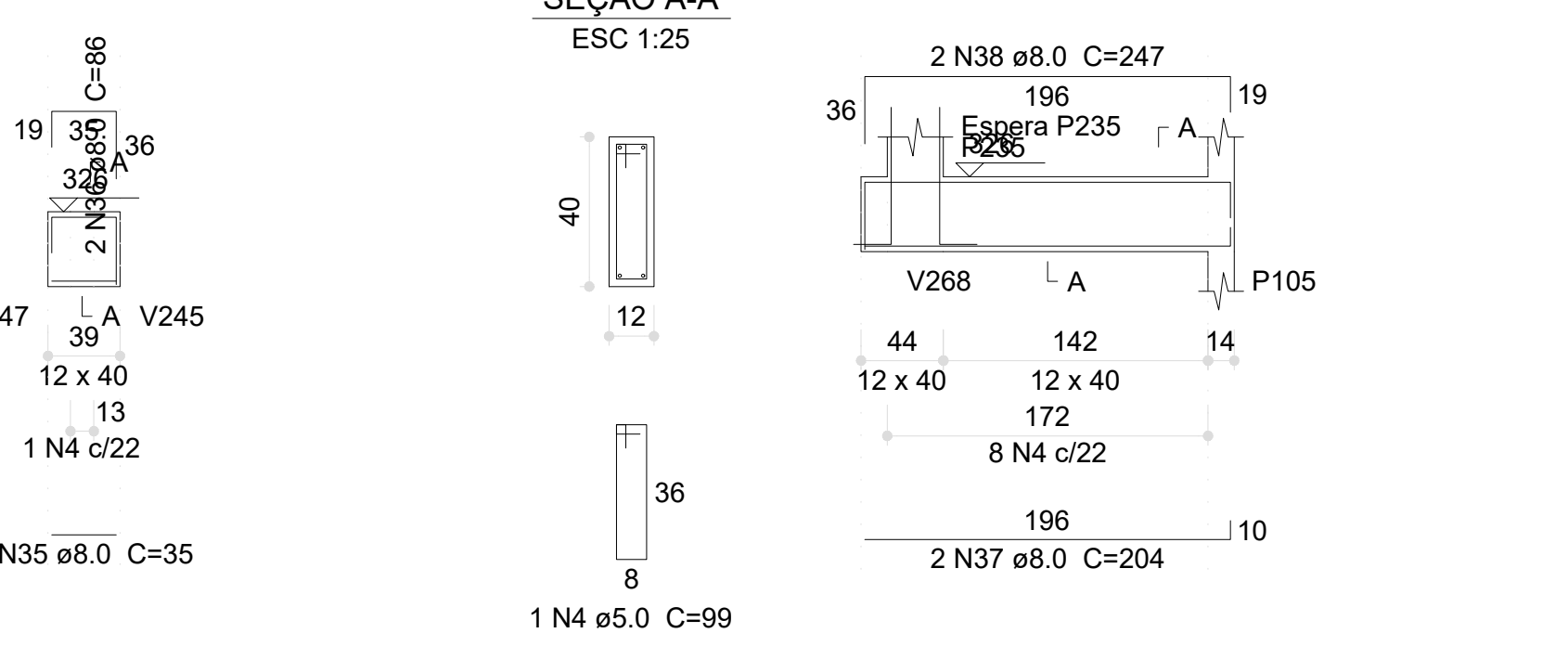
V204 (14 x 40)



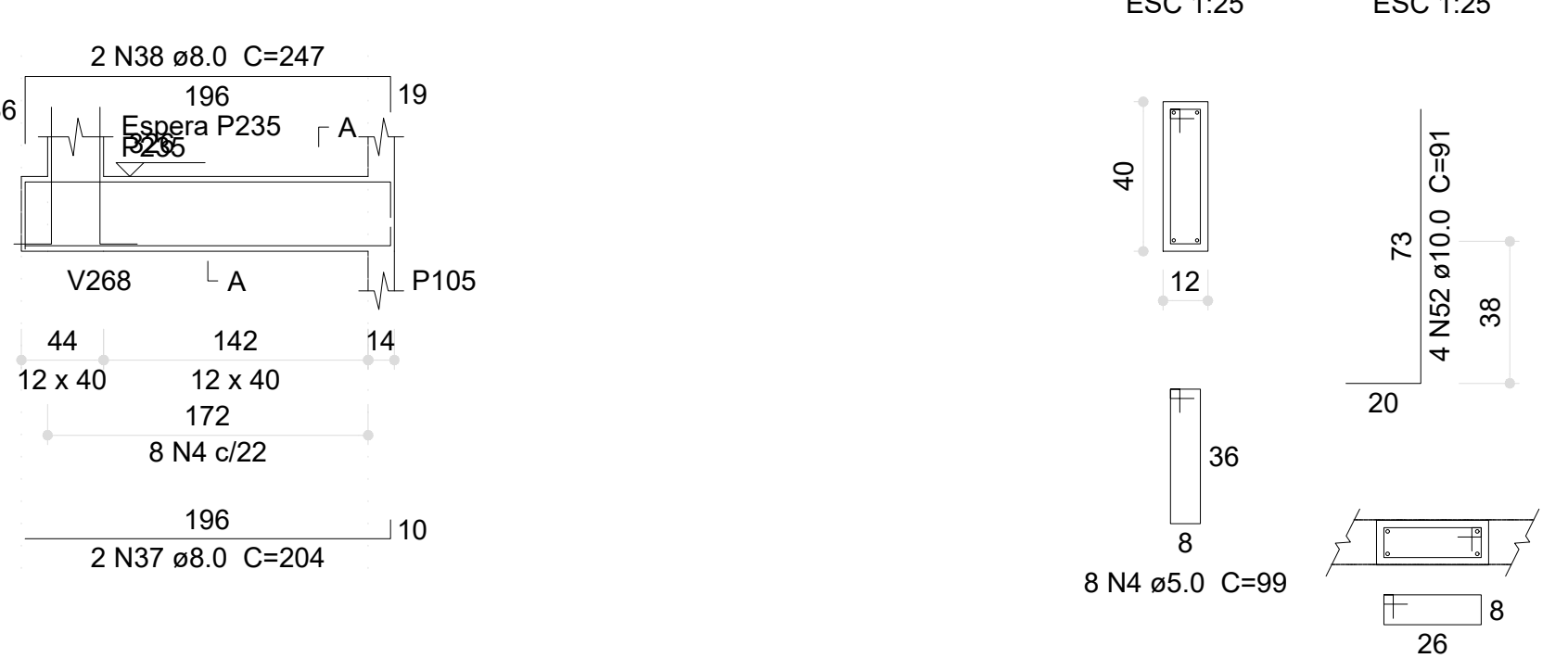
SEÇÃO A-A



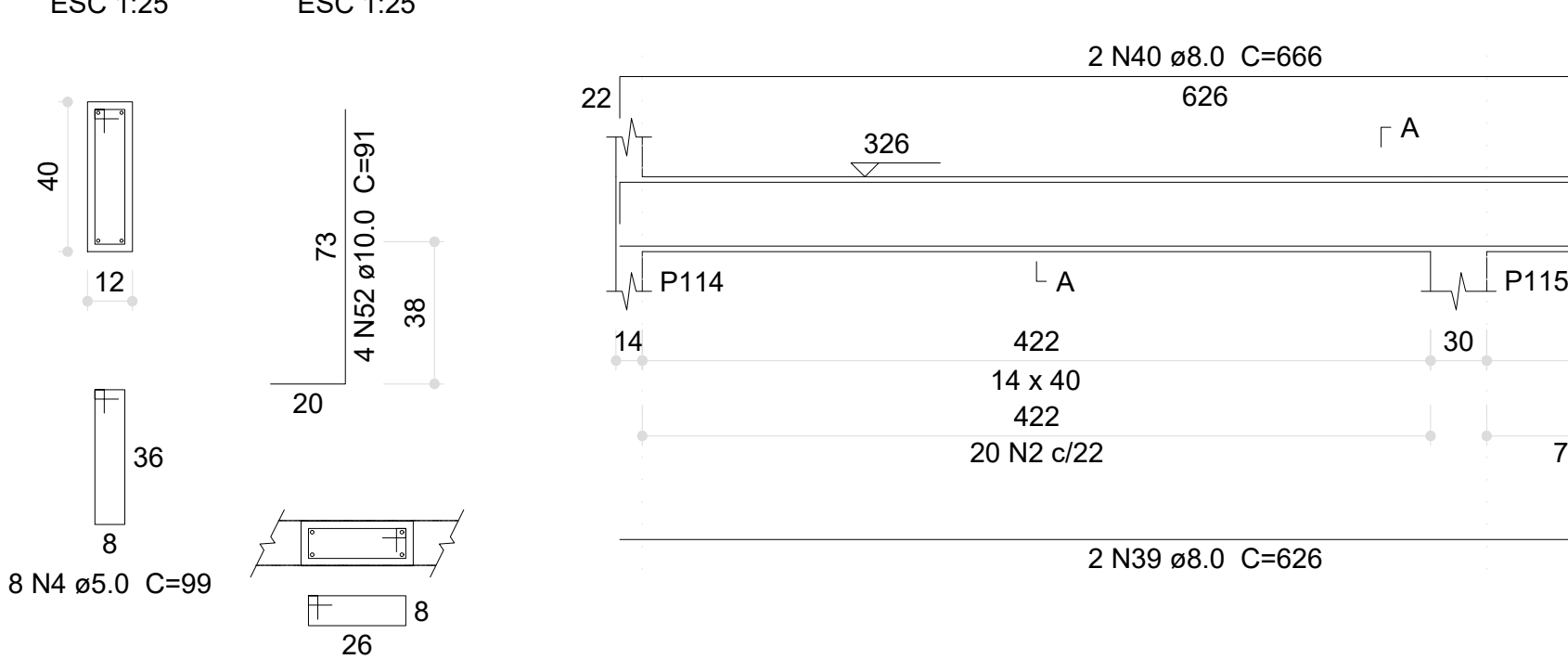
V140 (12 x 40)



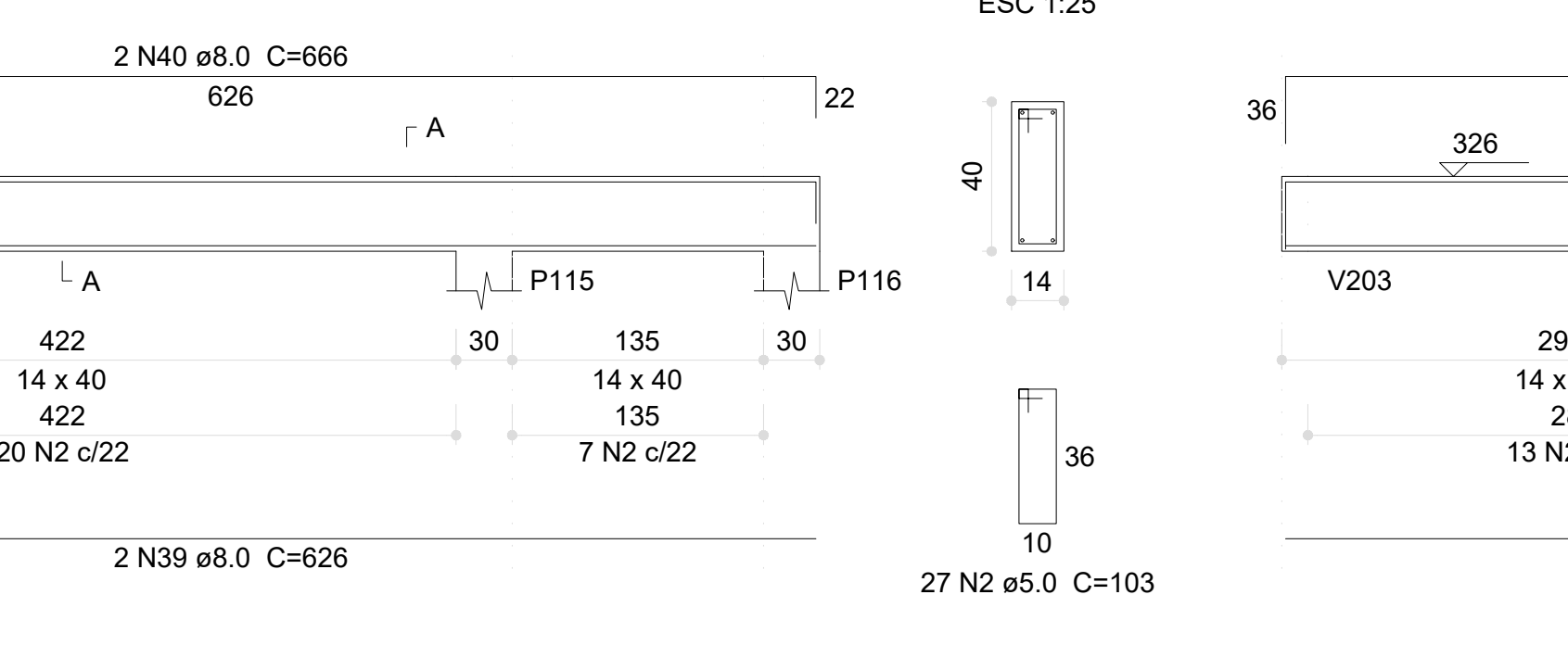
V141 (12 x 40)



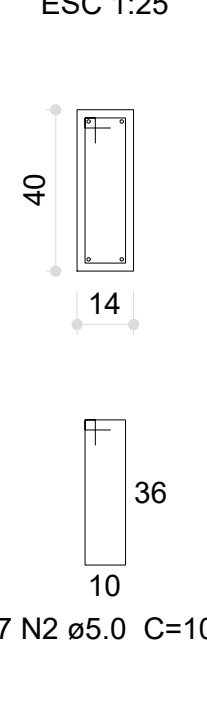
V142 (14 x 40)



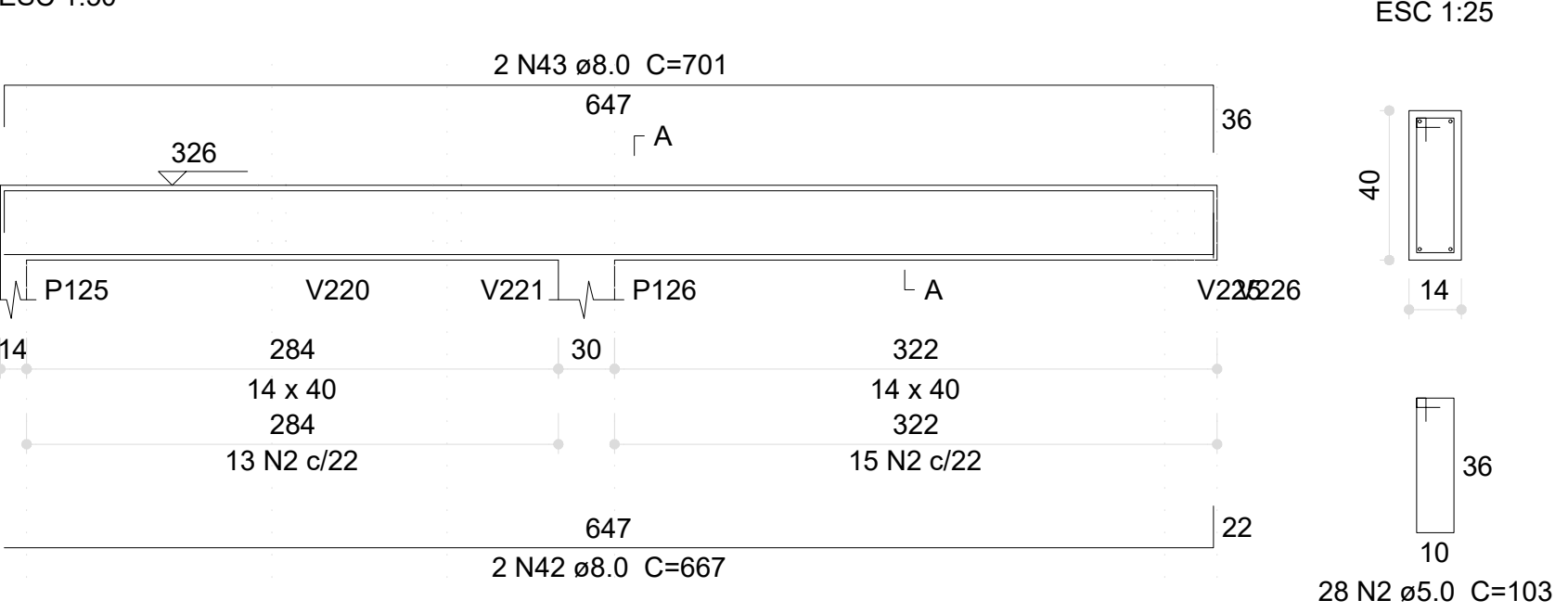
V143 (14 x 40)



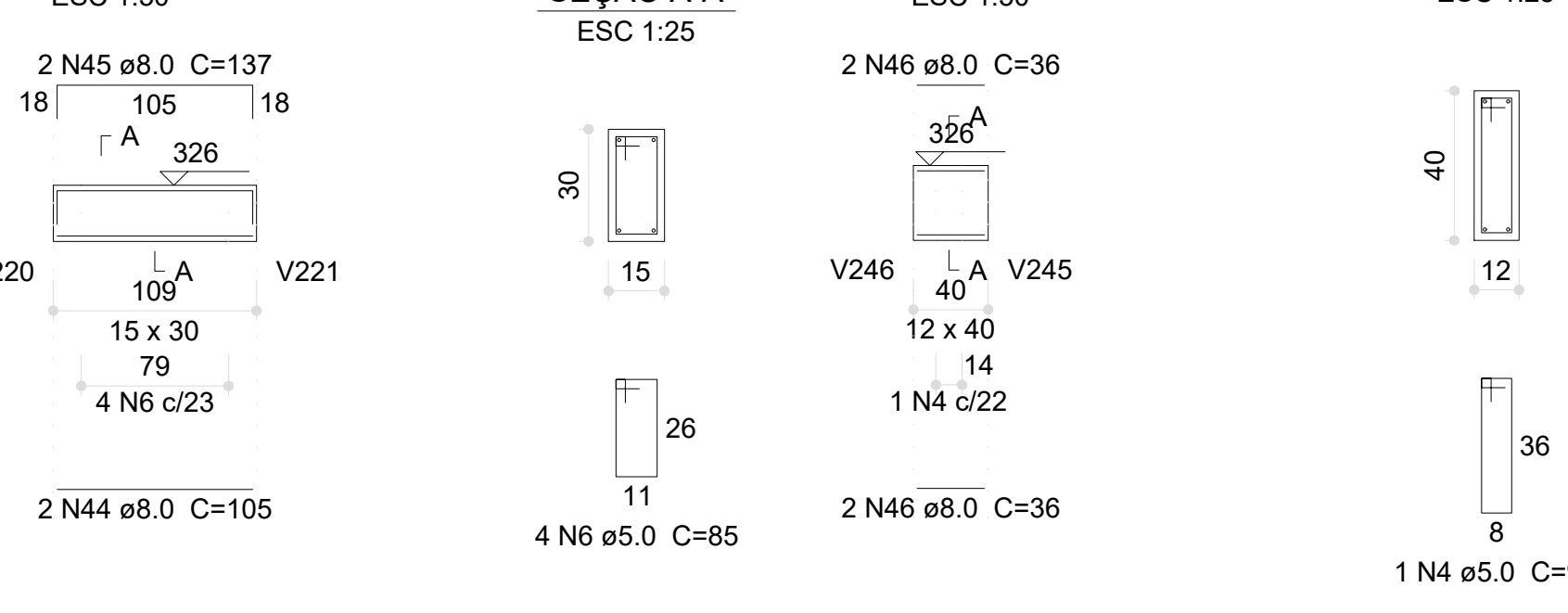
SEÇÃO A-A



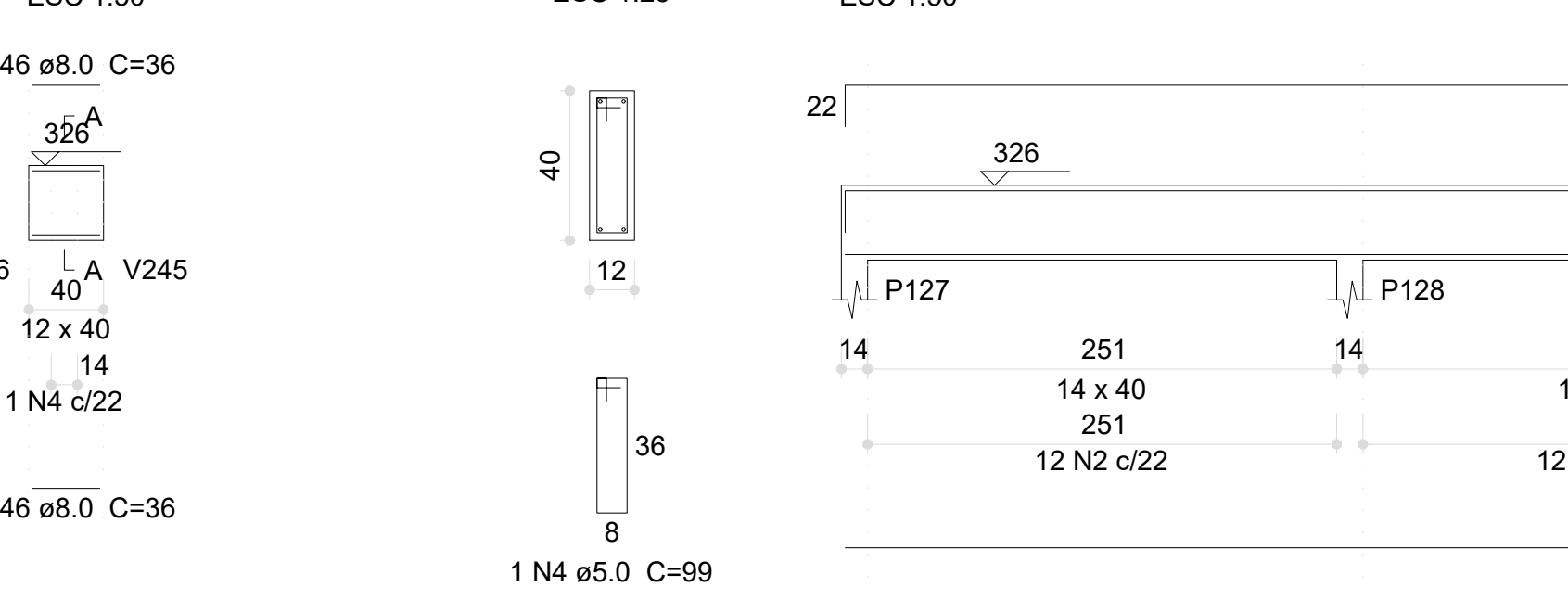
V144 (14 x 40)



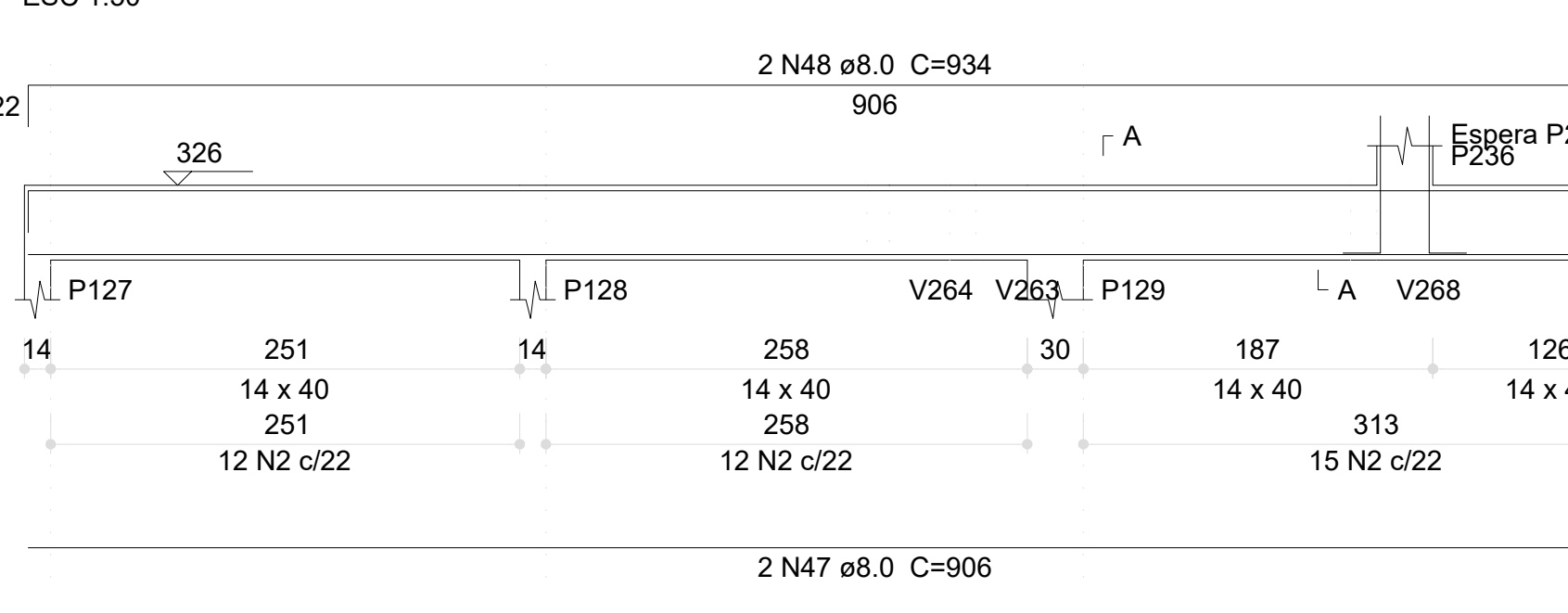
V145 (15 x 30)



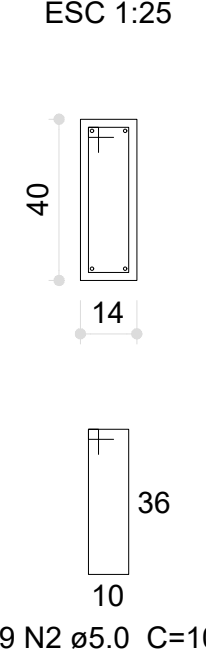
V146 (12 x 40)



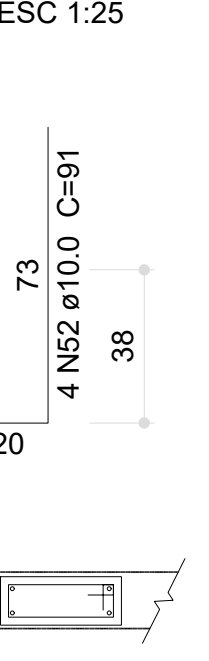
V147 (14 x 40)



SEÇÃO A-A



SEÇÃO A-A



03	JANEIRO/2023	Revisão geral da disciplina conforme a atualização da arquitetura. Redimensionamento dos elementos estruturais e acústico de elementos para adequação da arquitetura. Atualização a NBR 6118/2014 e NBR 6122/2019.
02	JANEIRO/2017	Atendimento a NBR 6122/2019. Alteração: quadro de áreas, fechamento frontal, sanitários 1 e 2, altura da plataforma, mobiliário e equipamento, altura da cerâmica nos sanitários, cor das paredes dos sanitários e altura da porta P44. Acústico: gradil e quadro de cargas no canteiro d'água, de dutos hidráulicos e esgoto sanitário.
01	JULHO/2016	Alteração paredes - shift para tubulação hidráulica e detalhamento; alteração da altura da plataforma.
Nº	DATA	DESCRIÇÃO
CONTROLE DE REVISÕES		

Resumo do aço

ACO	DIAM (mm)	C.TOTAL (m)	PESO (kg)
CA50	8.0	450	177.5
CA50	10.0	72.7	44.8
CA60	5.0	562.3	86.7
PESO TOTAL (kg)			
CA50	222.3		
CA60	86.7		

Volume de concreto (C-30) = 6.12 m³
Área de forma = 77.43 m²

PROJETO PADRÃO - FNDE

PROPRIETÁRIO:	
ENDEREÇO:	
MUNICÍPIO - UF:	
PROPRIETÁRIO:	
RESP. TÉCNICO:	CAU / CREA
AUTOR DO PROJETO:	CAU / CREA
APROVAÇÕES	CAU / CREA

PREFEITURA / RA	
OBSERVAÇÕES:	

CRECHE PRÉ-ESCOLA TIPO 1 PROJETO DE ESTRUTURA DE CONCRETO

COORDENAÇÃO CGEST - Coordenação Geral de Infraestrutura Educativa	DETALHAMENTO ARMAÇÃO DAS VIGAS PAVIMENTO TÉRREO PARTE 02	SCO
REVISÃO R.00 R.01 R.02	ESCALA 1:25, 1:50 DATA EMISSÃO JAN/2023	PRANCHAS 20/30