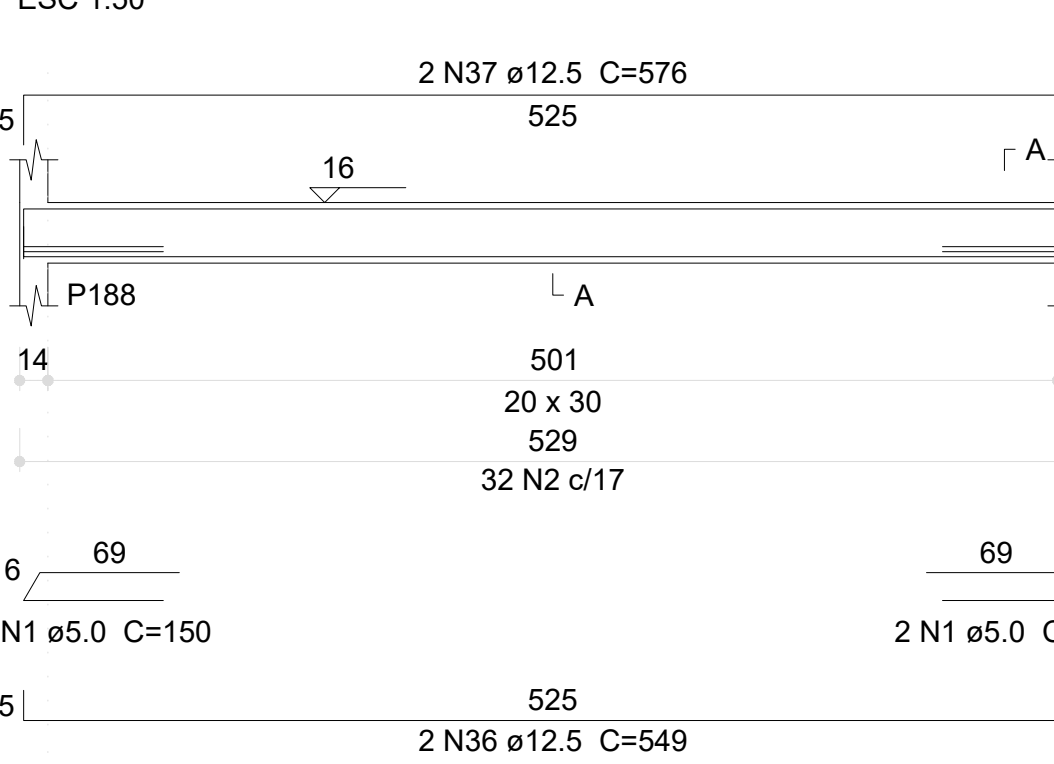
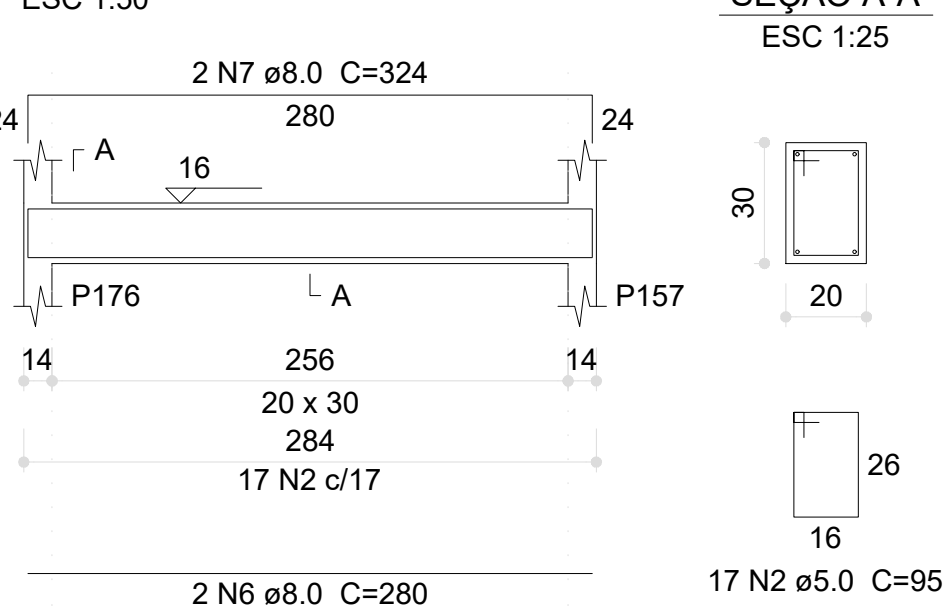


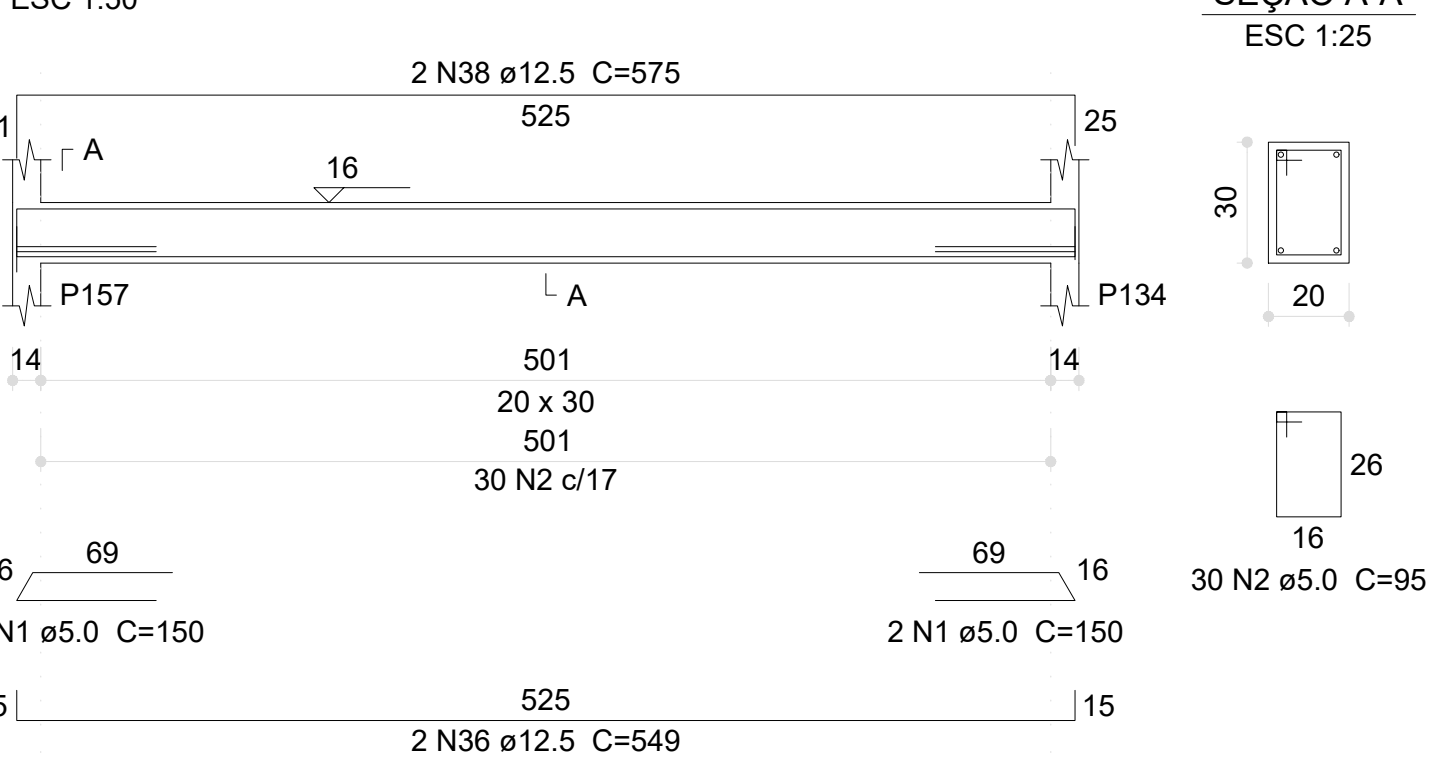
### V168 (20 x 30)



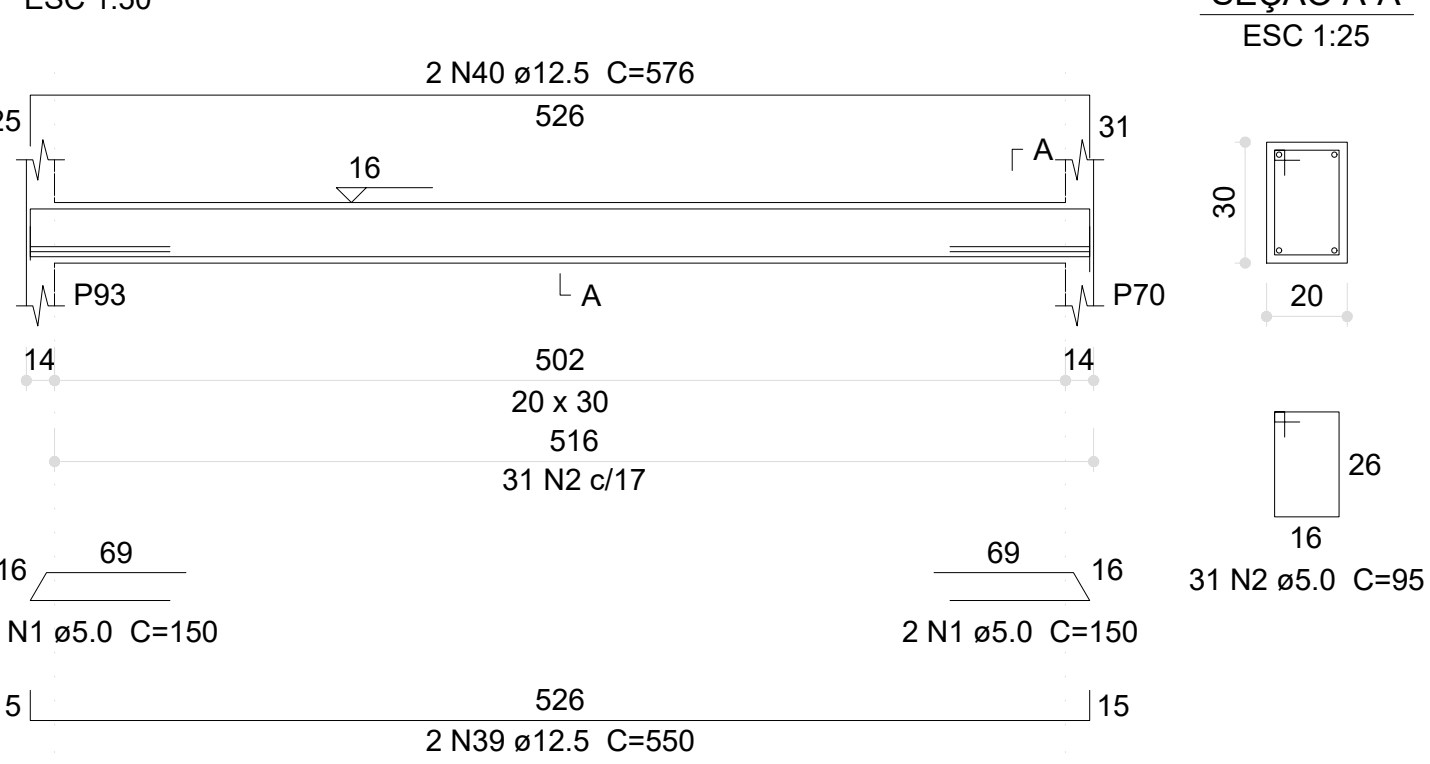
### V169 (20 x 30)



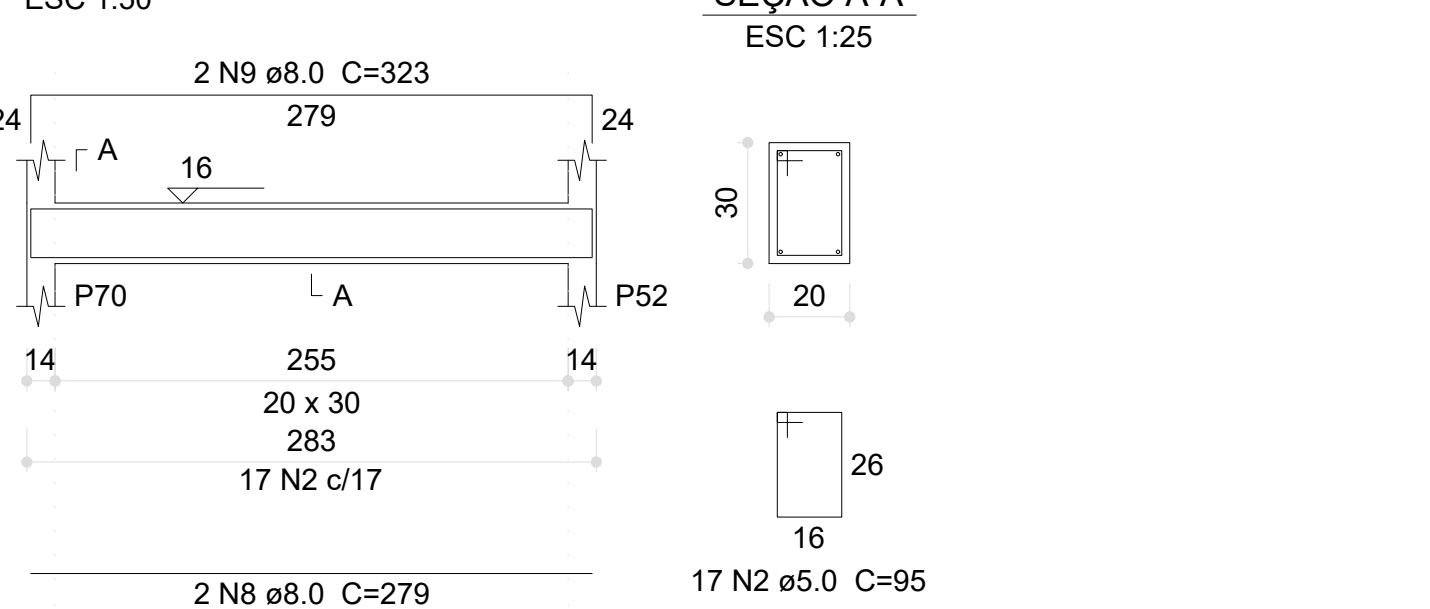
### V170 (20 x 30)



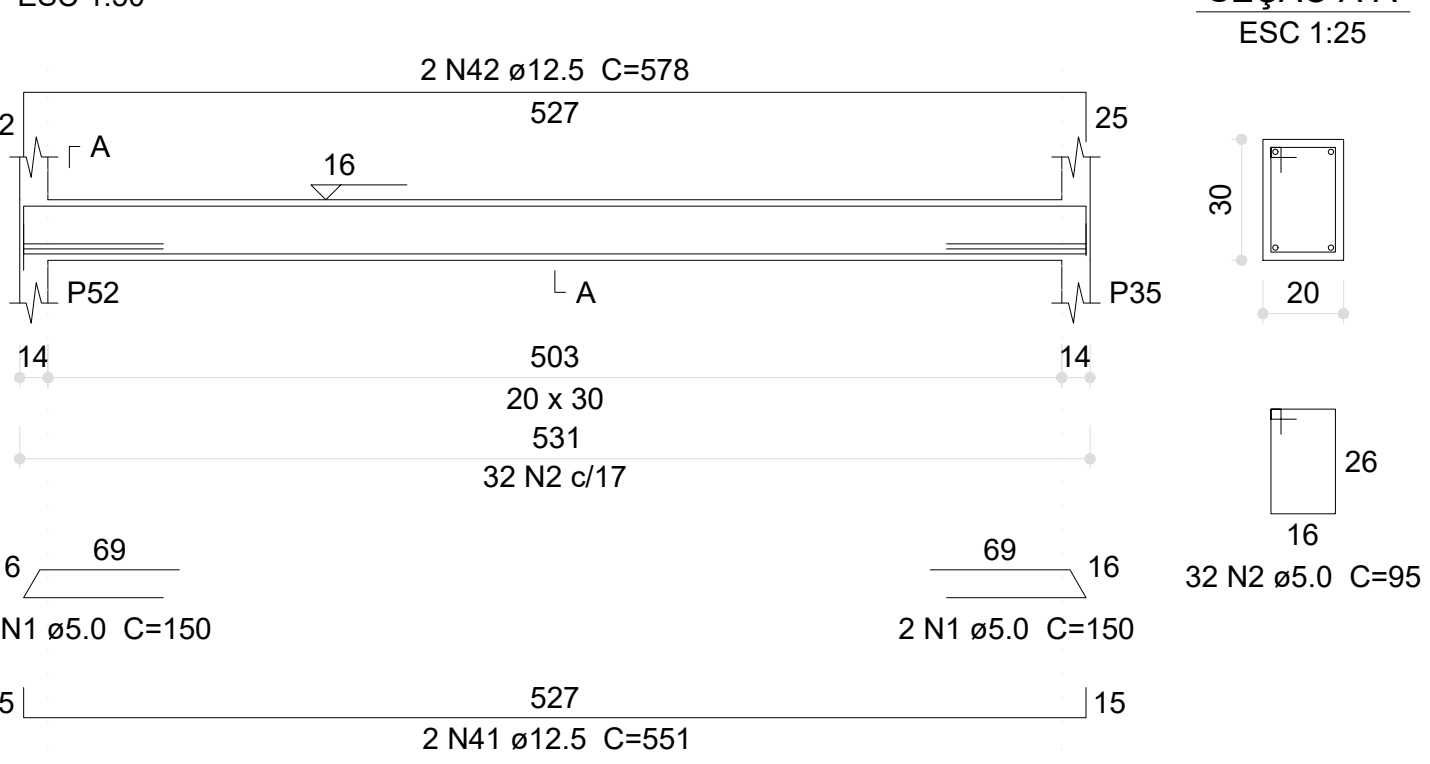
### V171 (20 x 30)



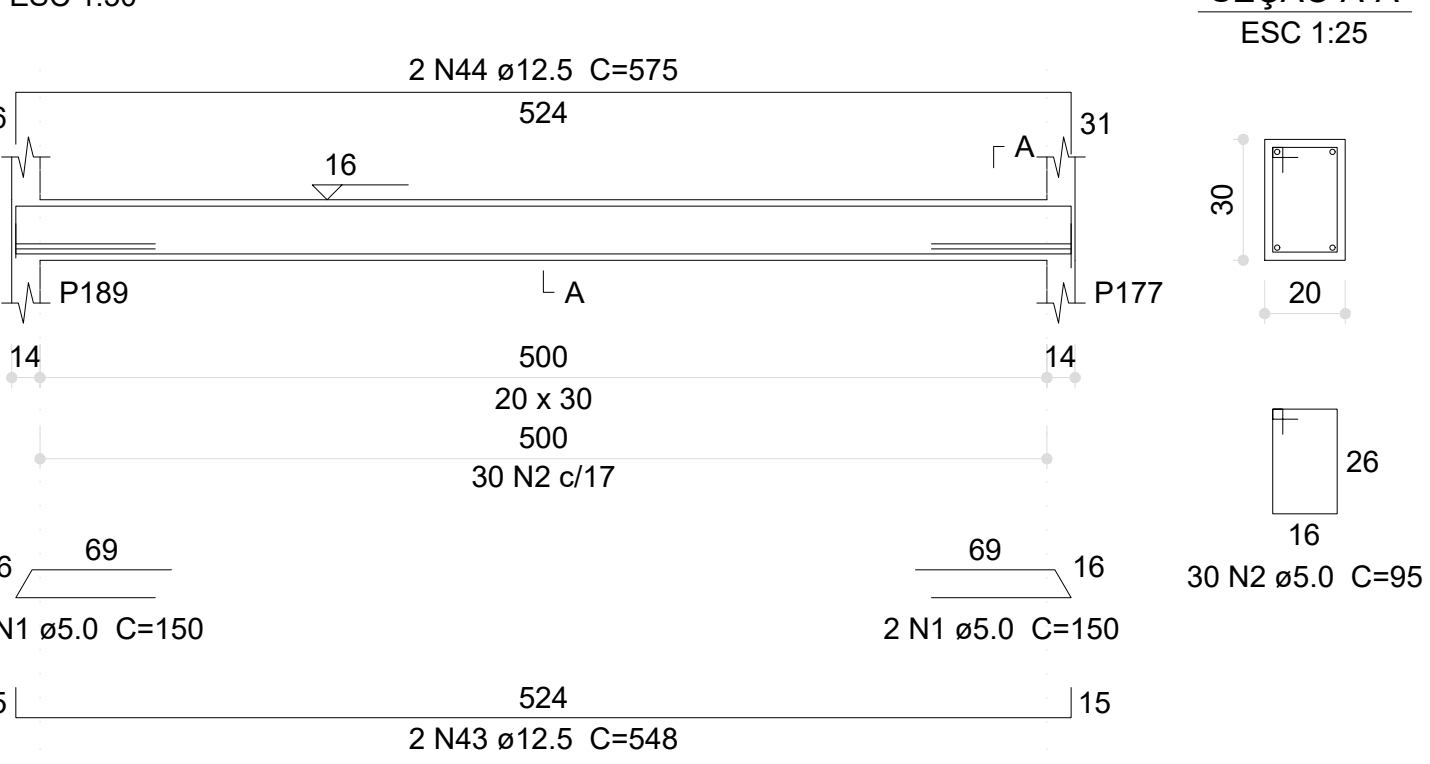
### V172 (20 x 30)



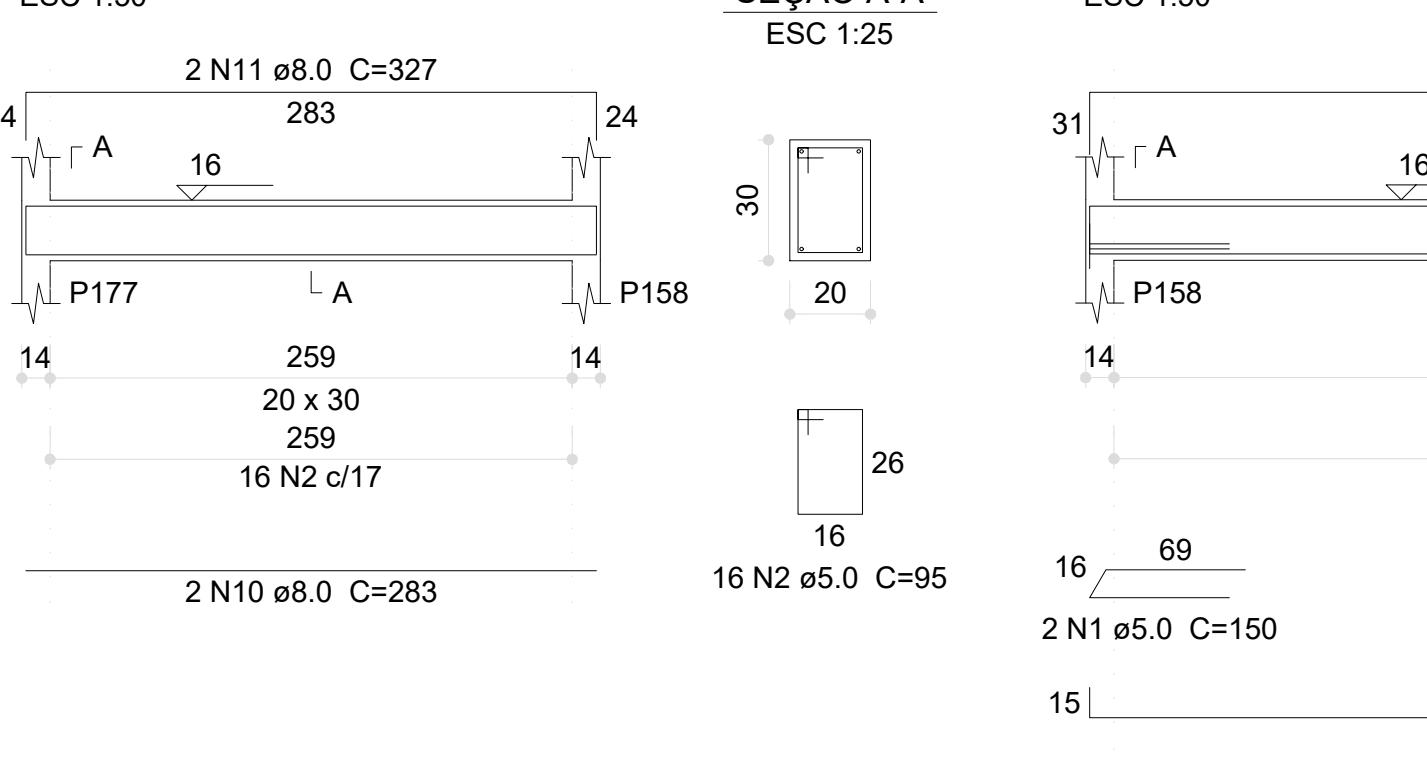
### V173 (20 x 30)



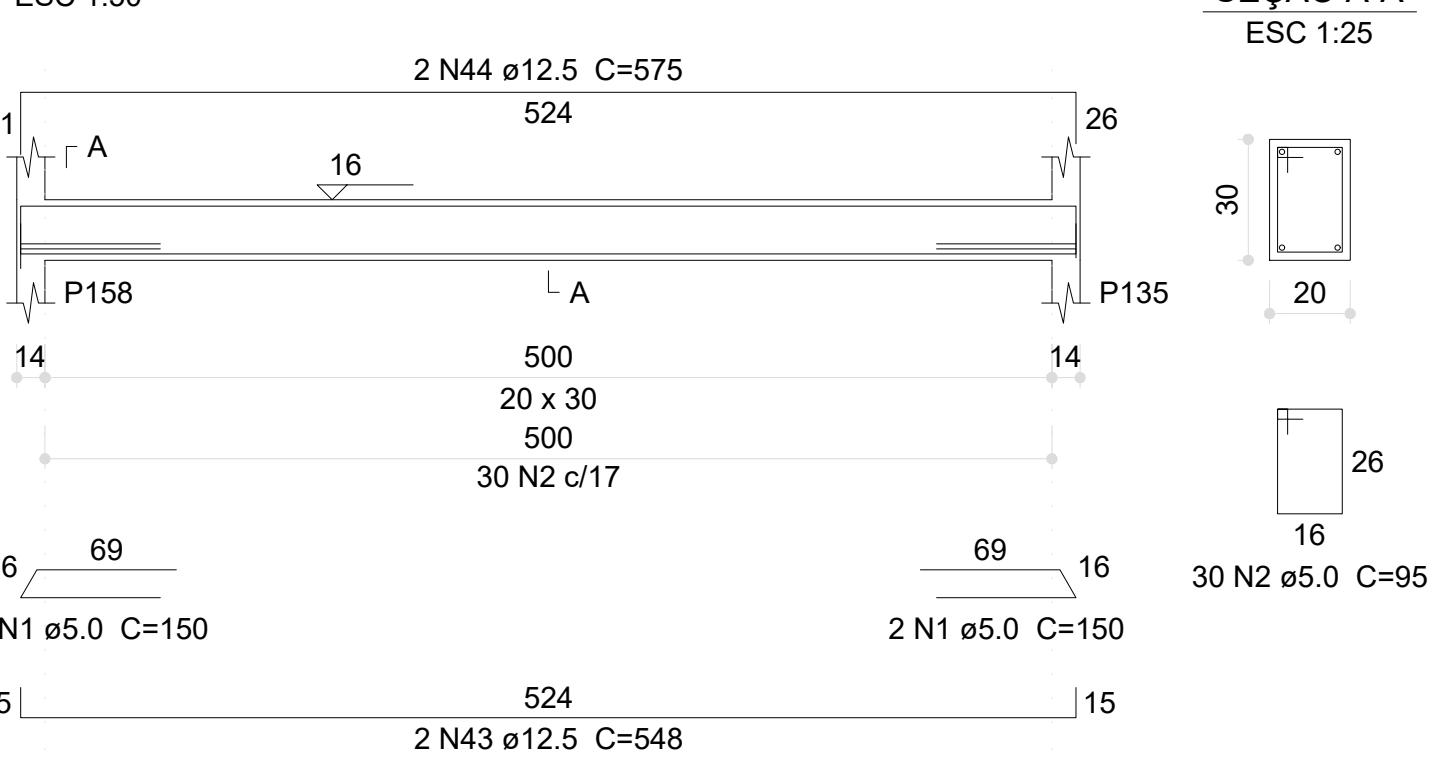
### V174 (20 x 30)



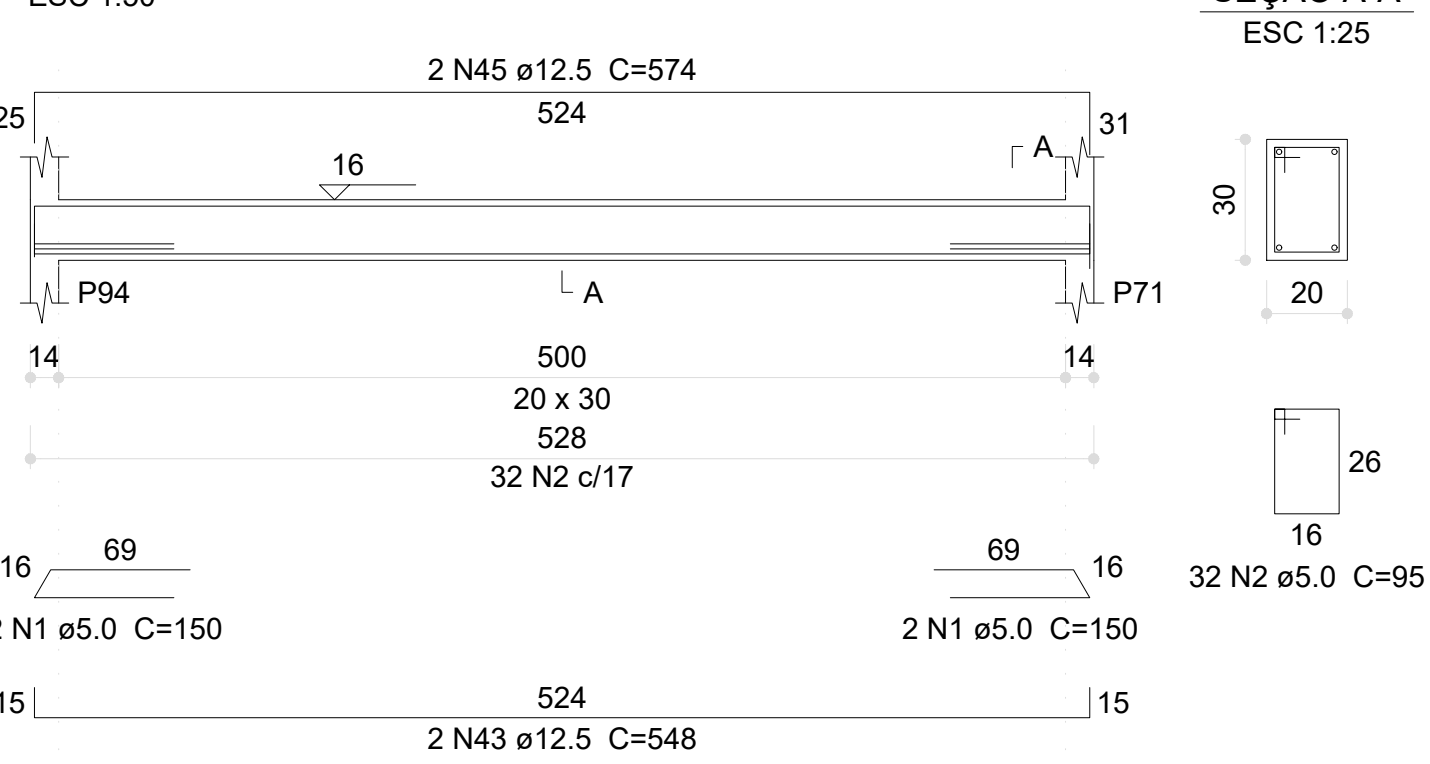
### V175 (20 x 30)



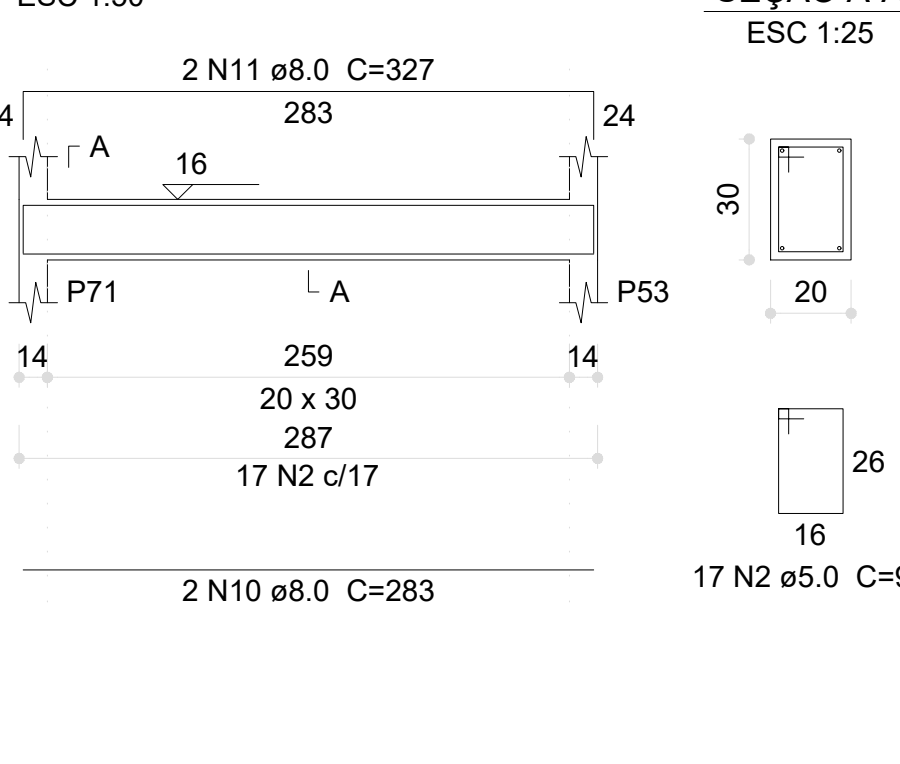
### V176 (20 x 30)



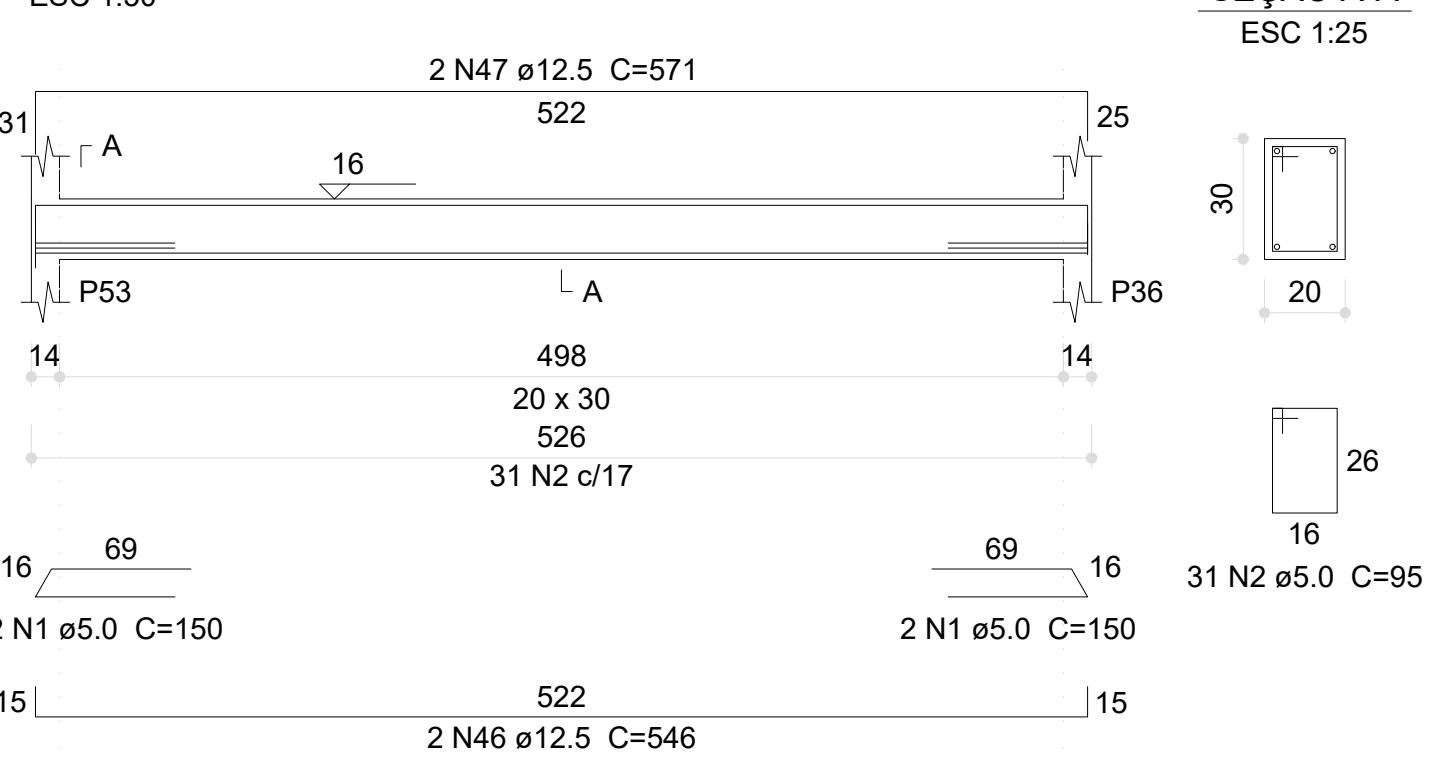
### V177 (20 x 30)



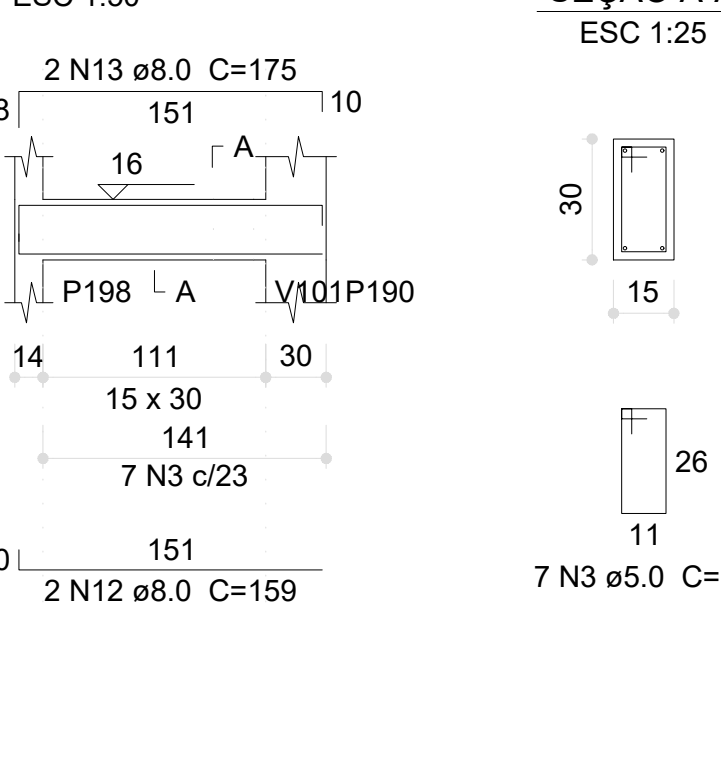
### V178 (20 x 30)



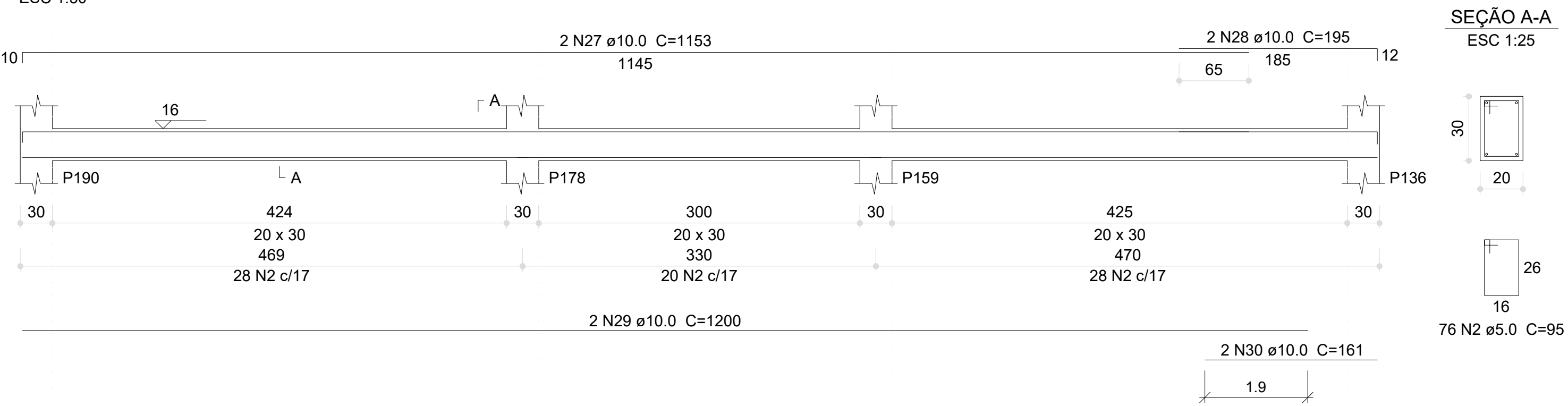
### V179 (20 x 30)



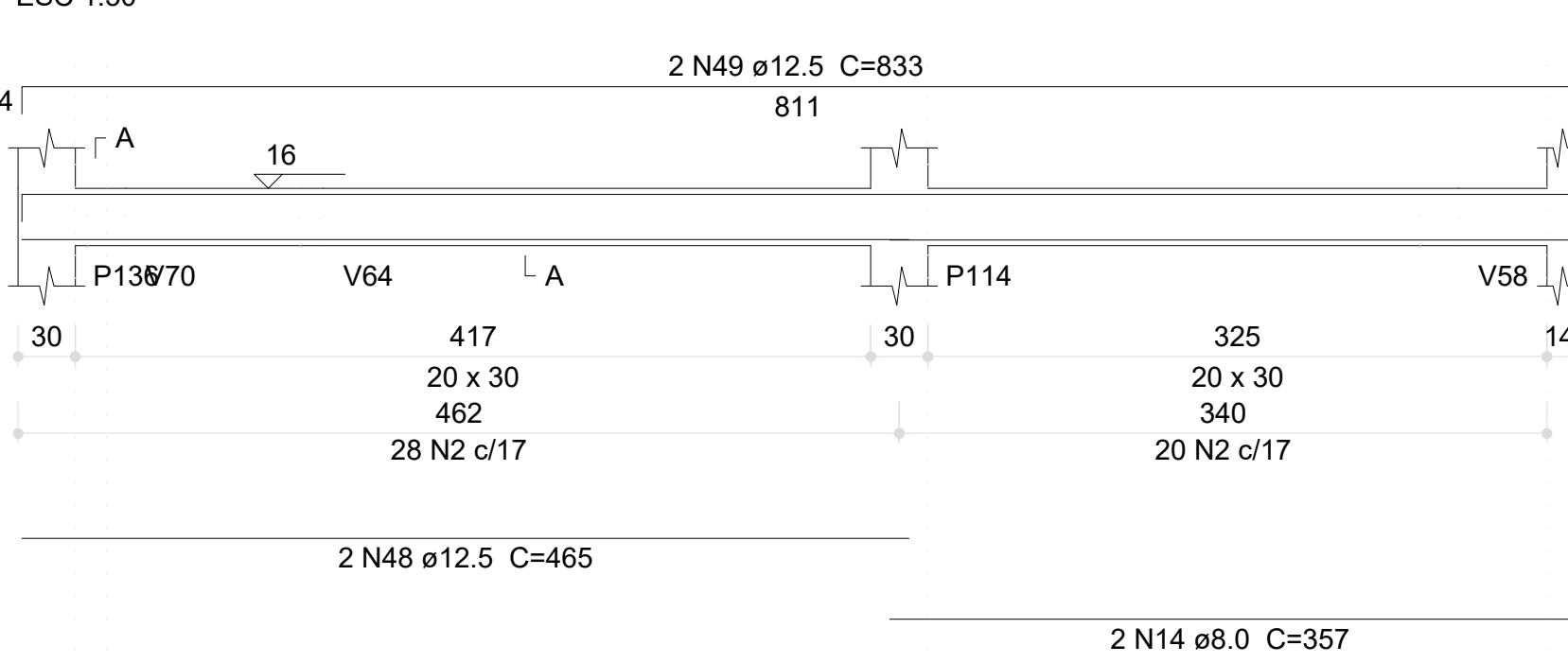
### V181 (15 x 30)



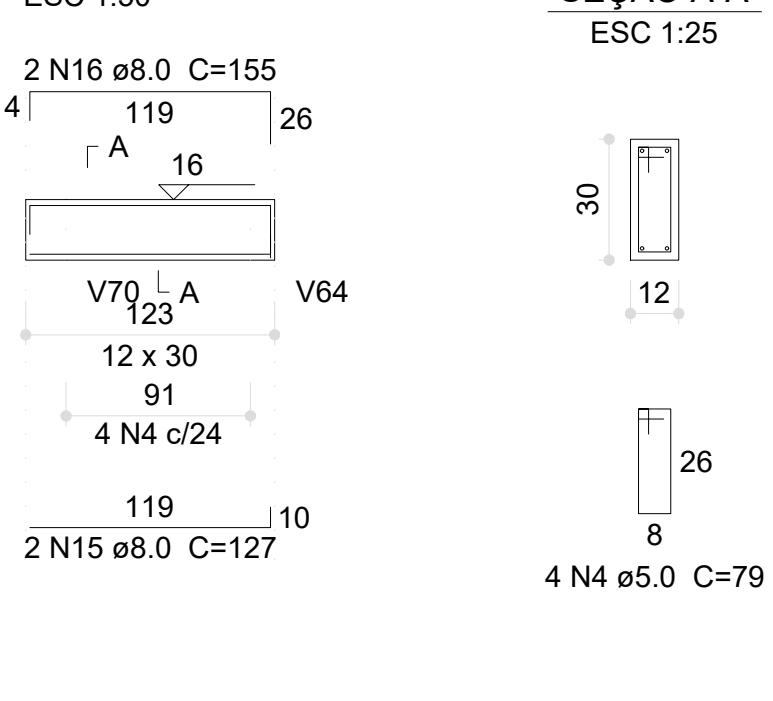
### V182 (20 x 30)



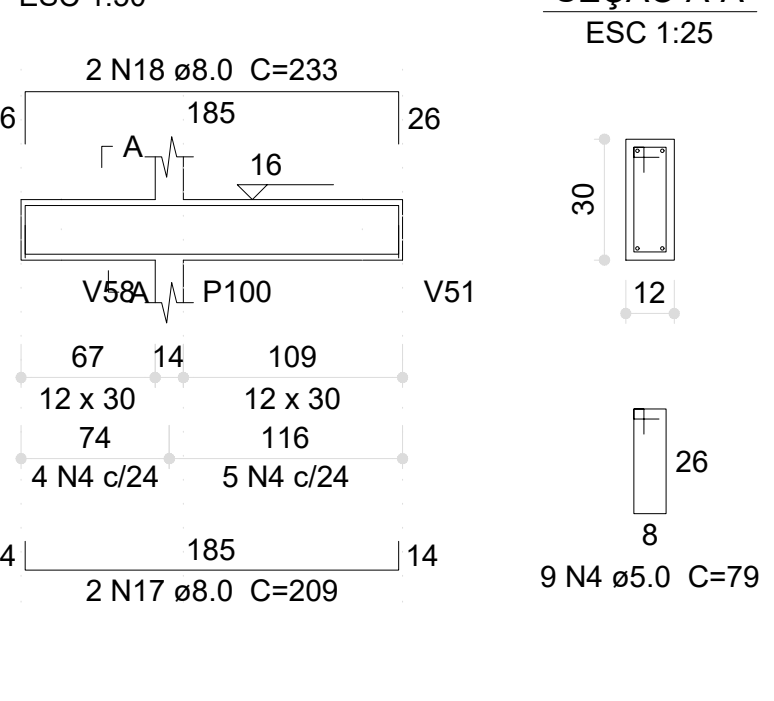
### V183 (20 x 30)



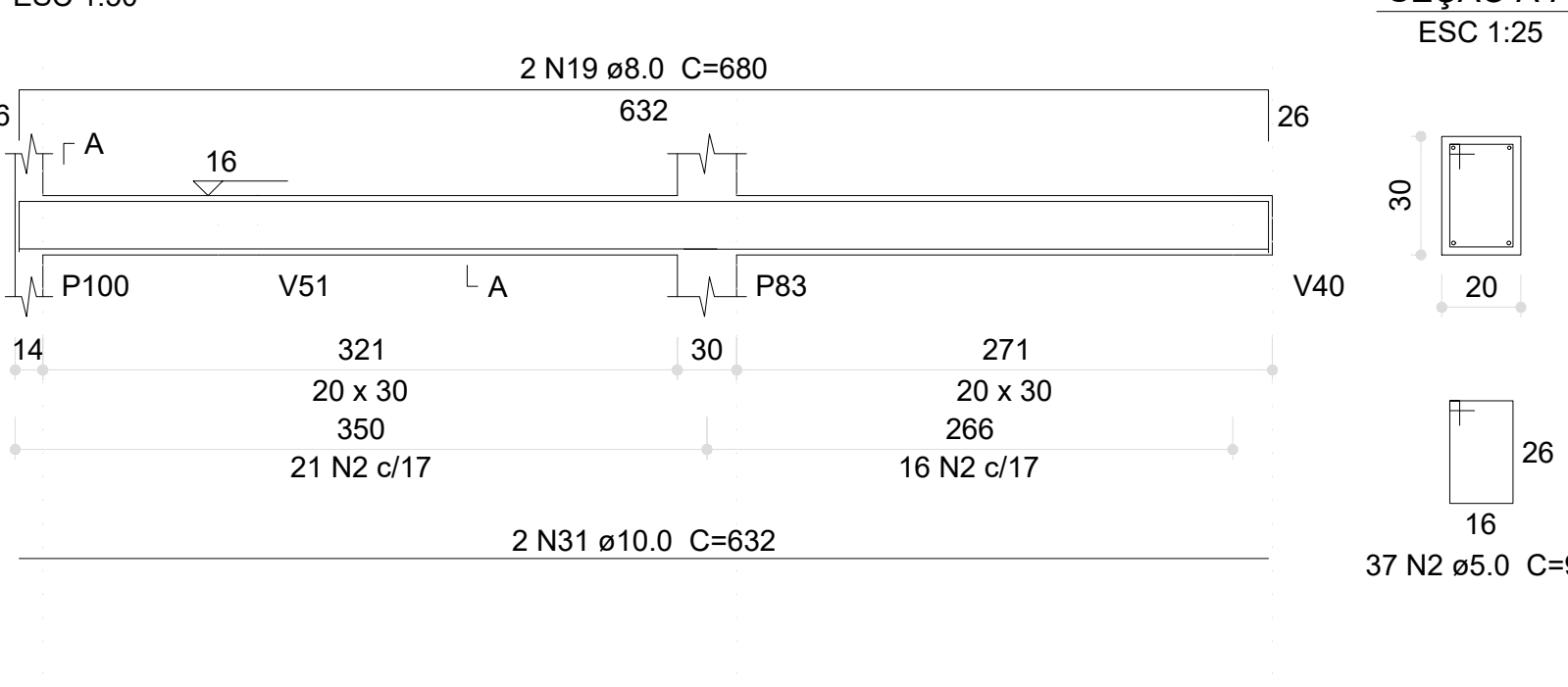
### V184 (12 x 30)



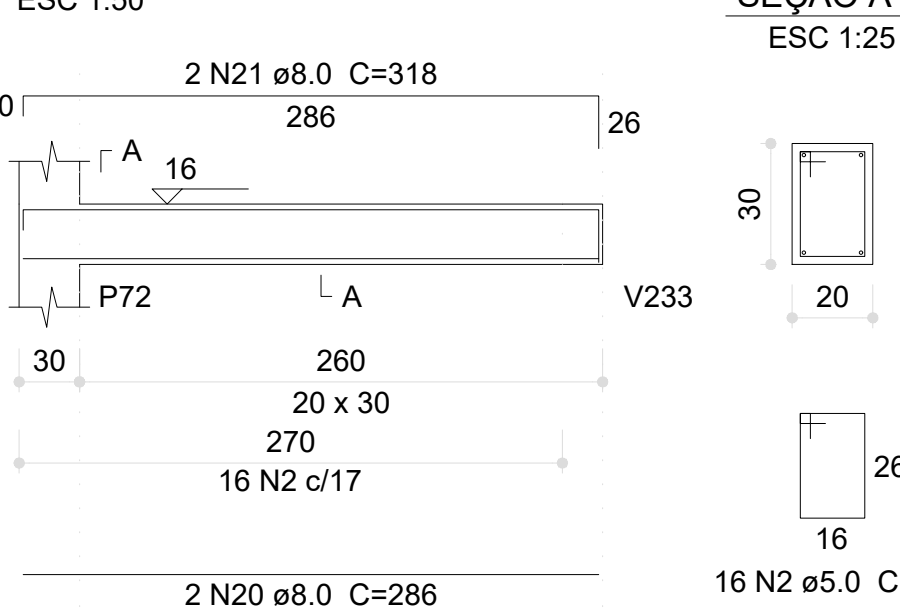
### V185 (12 x 30)



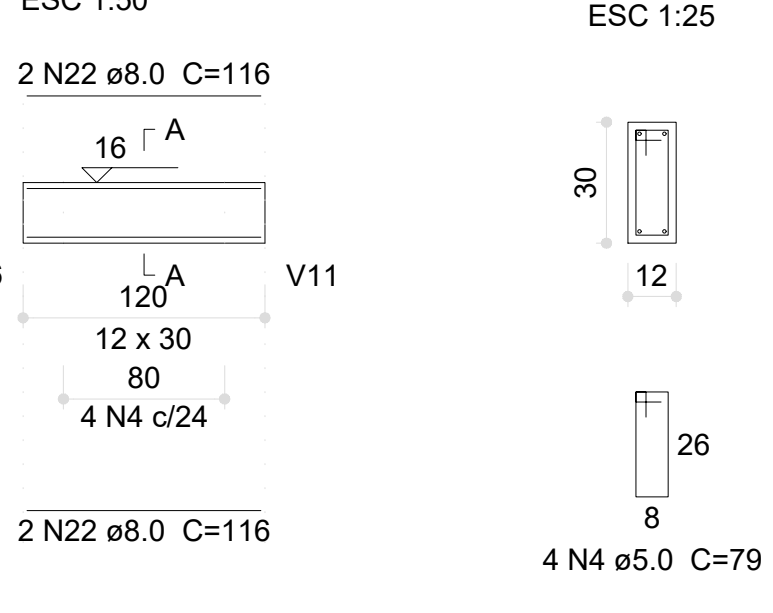
### V186 (20 x 30)



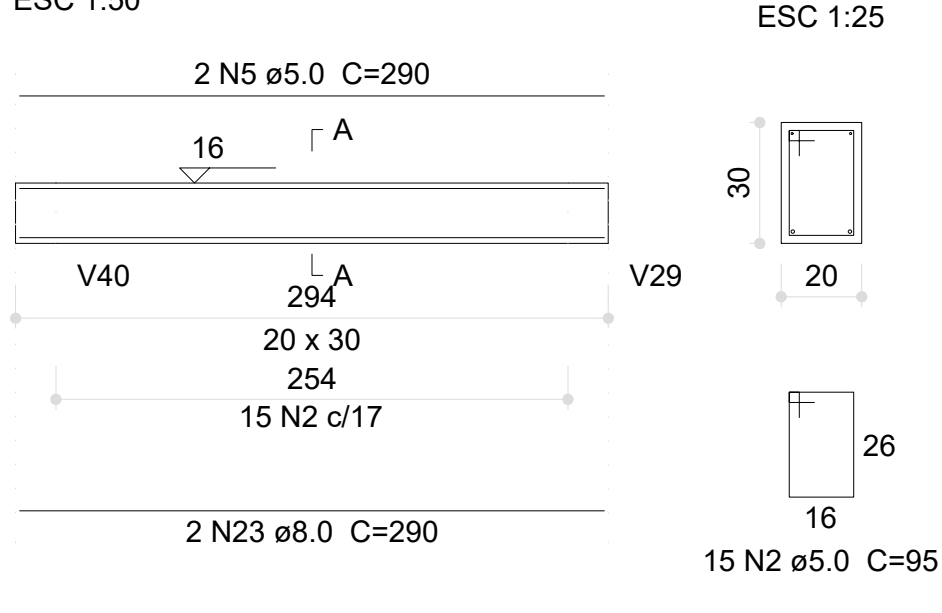
### V187 (20 x 30)



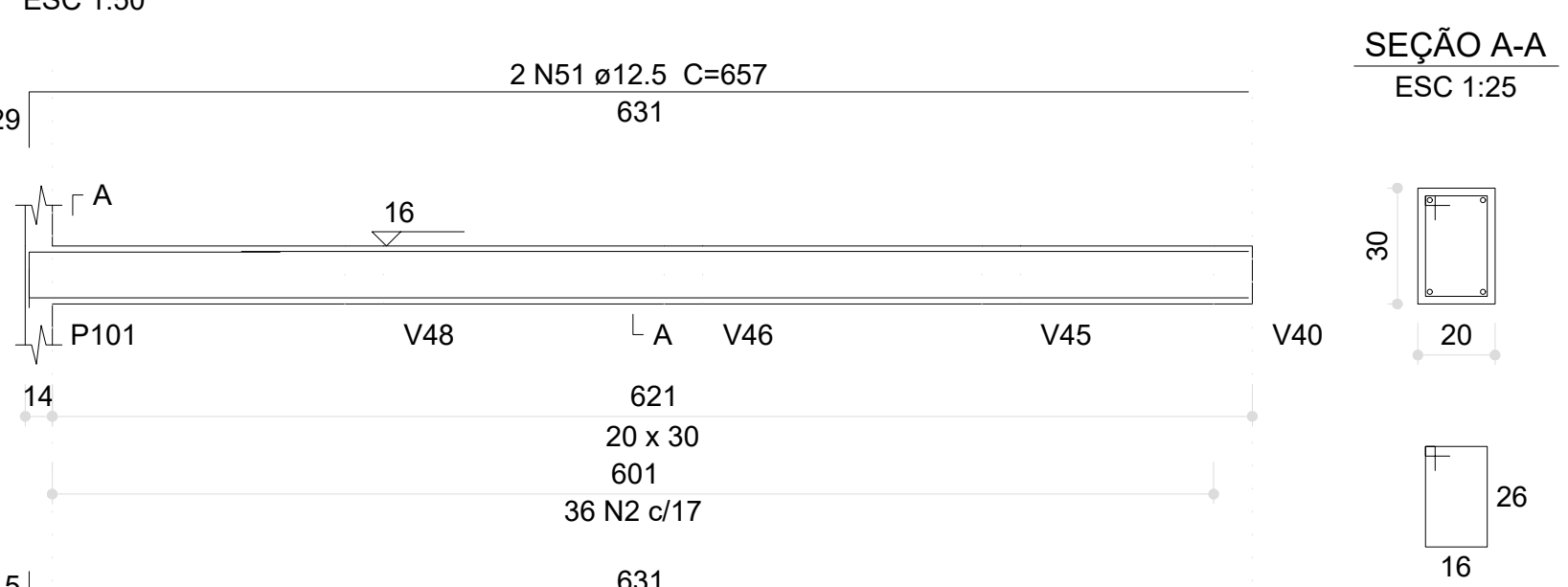
### V188 (12 x 30)



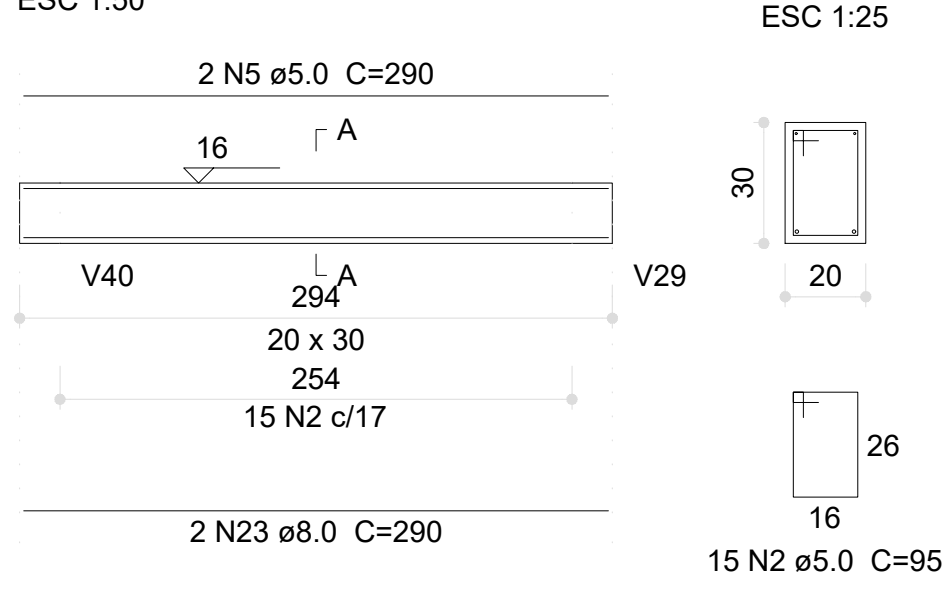
### V189 (20 x 30)



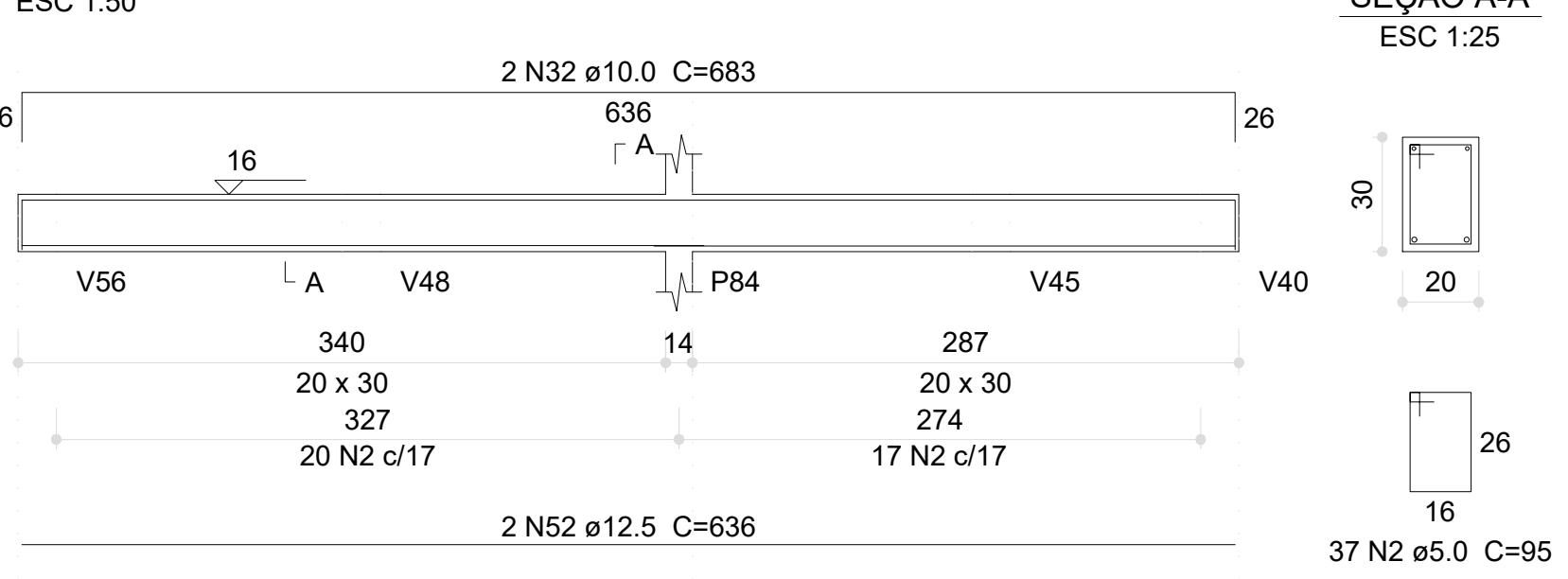
### V190 (20 x 30)



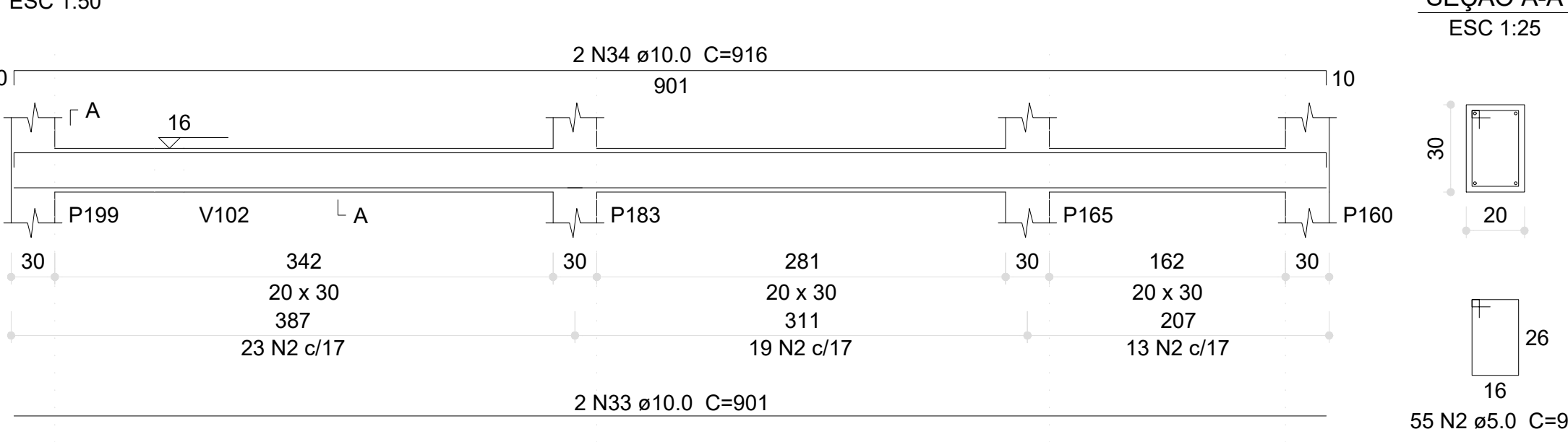
### V192 (20 x 30)



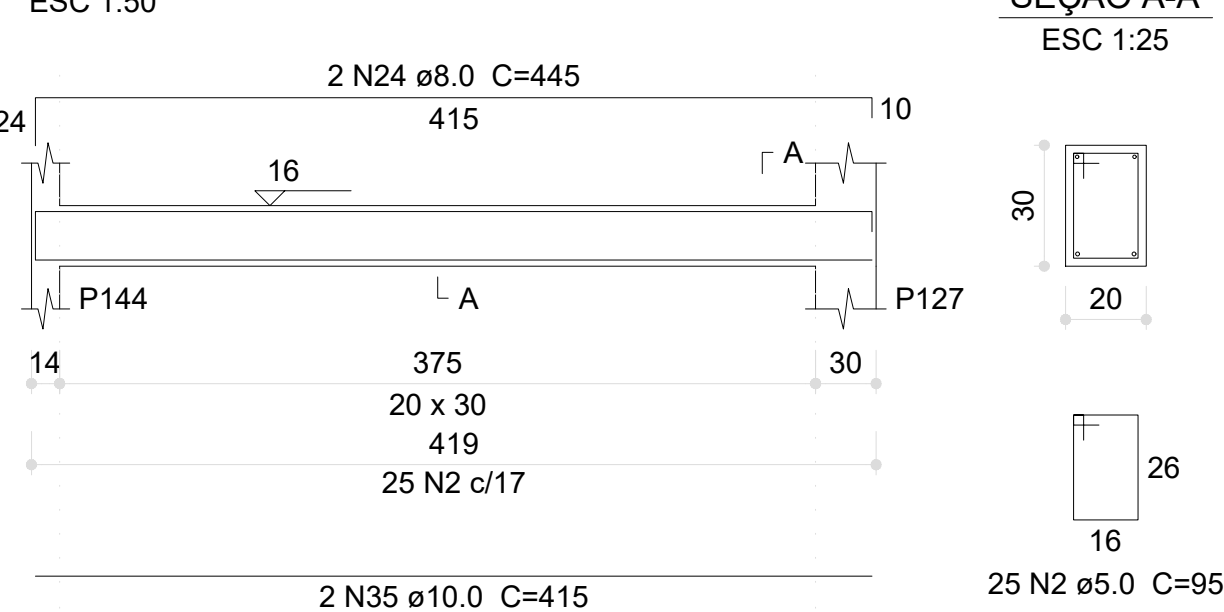
### V191 (20 x 30)



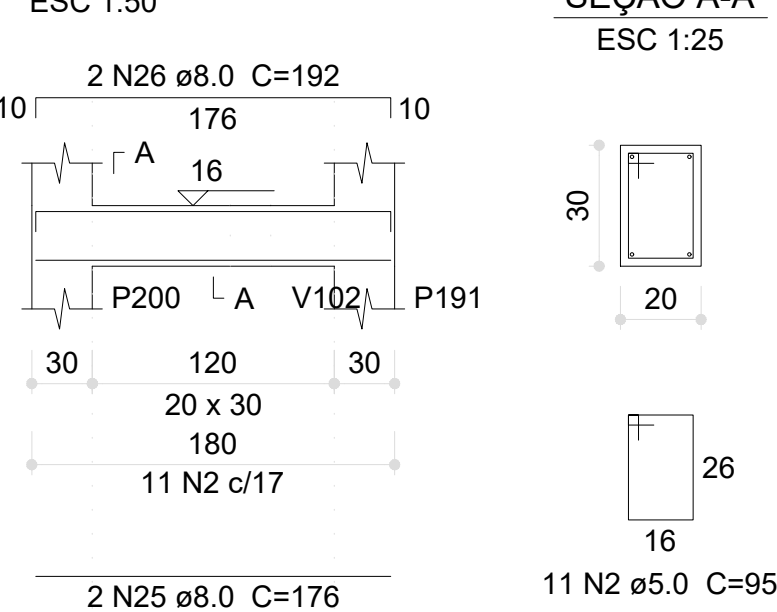
### V193 (20 x 30)



### V194 (20 x 30)



### V192 (20 x 30)



### V197 (20 x 30)



### Relação do aço

AÇO	N	DIAM (mm)	QUANT	C.UNIT (cm)	C.TOTAL (cm)
CA60	1	5.0	32	150	4900
	2	5.0	686	95	65170
	3	5.0	7	85	595
	4	5.0	17	79	1343
	5	5.0	4	290	1160
CA50	6	8.0	2	280	560
	7	8.0	2	324	648
	8	8.0	2	279	558
	9	8.0	2	323	646
	10	8.0	4	263	1132
	11	8.0	4	327	1308
	12	8.0	2	159	318
	13	8.0	2	175	350
	14	8.0	2	357	714
	15	8.0	2	127	254
	16	8.0	2	155	310
	17	8.0	2	209	418
	18	8.0	2	233	466
	19	8.0	2	680	1360
	20	8.0	2	286	572
	21	8.0	2	318	636
	22	8.0	4	116	464
	23	8.0	4	290	1160
	24	8.0	2	445	890
	25	8.0	2	176	352
	26	8.0	2	192	384
	27	10.0	2	1153	2306
	28	10.0	2	195	390
	29	10.0	2	1200	2400
	30	10.0	2	161	322
	31	10.0	2	632	1264
	32	10.0	2	683	1366
	33	10.0	2	901	1802
	34	10.0	2	916	1832
	35	10.0	2	415	830
	36	12.5	4	549	2196
	37	12.5	2	576	1152
	38	12.5	2	575	1150
	39	12.5	2	550	1100
	40	12.5	2	576	1152
	41	12.5	2	551	1102
	42	12.5	2	578	1156
	43	12.5	6	548	3288
	44	12.5	4	575	2300
	45	12.5	2	574	1148
	46	12.5	2	546	1092
	47	12.5	2	571	1142
	48	12.5	2	465	930
	49	12.5	2	833	1666
	50	12.5	2	643	1286
	51	12.5	2	657	1314
	52	12.5	2	636	1272

### Resumo do aço

AÇO	DIAM (mm)	C.TOTAL (m)	PESO (kg)
CA50	8.0	135	53.3
	10.0	125.2	77.1
	12.5	244.5	235.5
CA60	5.0	730.7	112.6
PESO TOTAL (kg)			
CA50		365.9	
CA60		112.6	
Volume de concreto (C-30) = 6.83 m³			
Área de forma = 91.76 m²			

03	JANEIRO/2023	Revisão geral da disciplina conforme a atualização da arquitetura. Redimensionamento dos elementos estruturais e acríscimo de elementos para adequação da arquitetura. Atendimentos a NBR 6118/2014 e NBR 6122/2019.
02	JANEIRO/2017	Atendimento a NBR 6150/2015. Alteração: quadro de áreas, fechamento frontal, sanitários 1 e 2, altura da plataforma, mobiliário e equipamento, altura da cerâmica nos sanitários, cor das paredes dos sanitários e altura da porta P44. Atendimentos: gradil e quadro de cargas no canteiro d'água, de duchas higiênicas e escaninhos pré-estressa.
01	JULHO/2016	Alteração paredes - shaft para tubulação hidráulica e detalhamento; alteração da altura da plataforma.
Nº	DATA	DESCRIÇÃO
CONTROLE DE REVISÕES		

### PROJETO PADRÃO - FNDE

PROPRIETÁRIO:	
ENDEREÇO:	
MUNICÍPIO - UF:	
PROPRIETÁRIO:	
RESP. TÉCNICO:	CAU / CREA
AUTOR DO PROJETO:	CAU / CREA
APROVAÇÕES	CAU / CREA
OBSERVAÇÕES:	
	PREFEITURA / RA

### CRECHE PRÉ-ESCOLA TIPO 1

### PROJETO DE ESTRUTURA DE CONCRETO

COORDENAÇÃO	DETALHAMENTO ARMAÇÃO DAS VIGAS	SCO
CGEST - Coordenação Geral de Infraestrutura Educacional	PAVIMENTO VIGA BALDRAME PARTE 07	
REVISÃO	ESCALA	PRANCHAS
R.00 R.03 R.01 R.02	1:25, 1:50	
FORMATO (1189x841)	DATA EMISSÃO	16/30
	JAN/2023	